

# Proximity Sensors Inductive Rectangular Plast Housings Types IC, ID, Cable and Plug

CARLO GAVAZZI



- Nickel-plated brass housings
- Sensing distance: 2 or 4 mm
- For flush mounting (ID25) or non-flush mounting (IC17)
- Output: IC 17: Transistor, NPN/PNP, make or break switching  
ID 25: Transistor, NPN/PNP, make switching
- Power supply: 10 to 30 VDC
- Protection: Short-circuit (ID 25)
- 2 m PVC cable or plug M8 (ID 25)

## Product Description

Inductive proximity sensor in rectangular plast housing. This series is suitable for the control of axial and rotational movements. Output configured

as PNP or NPN, make switching or break switching (only IC 17). Connection with 2 m PVC cable or M8 plug (ID 25 only).

## Ordering Key

**ID 25 CNC 20 NO M5-K**

Ind. prox. switch	_____
Housing style	_____
Housing size	_____
Housing material	_____
Housing length	_____
Detection principle	_____
Sensing distance	_____
Output type	_____
Output configuration	_____
Connection	_____

## Type Selection

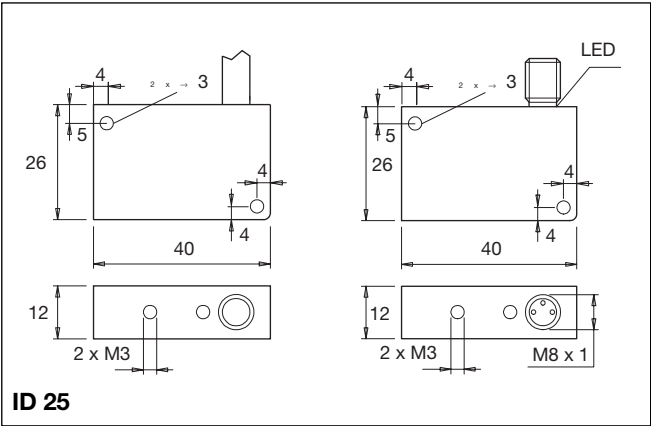
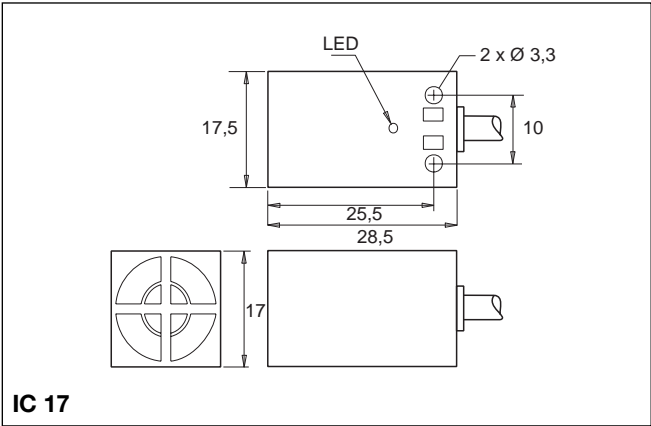
Rated op. dist. (S <sub>n</sub> )	Con- nec- tion	Housing dimensions [mm]	Ordering no. Transistor, NPN Make switching	Ordering no. Transistor, NPN Break switching	Ordering no. Transistor, PNP Make switching	Ordering no. Transistor, PNP Break switching
4 mm	Cable	17.5 x 17 x 28.5	IC 17 CNC 04 NO-K	IC 17 CNC 04 NC-K	IC 17 CNC 04 PO-K	IC 17 CNC 04 PC-K
2 mm	Cable	40 x 26 x 12	ID 25 CNC 20 NO-K		ID 25 CNC 20 PO-K	
2 mm	Plug	40 x 26 x 12	ID 25 CNC 20 NO M5-K		ID 25 CNC 20 PO M5-K	

## Specifications

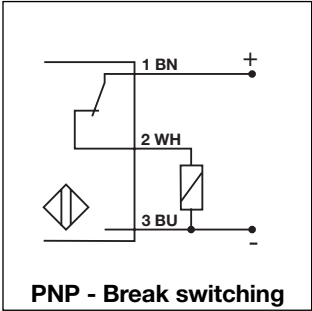
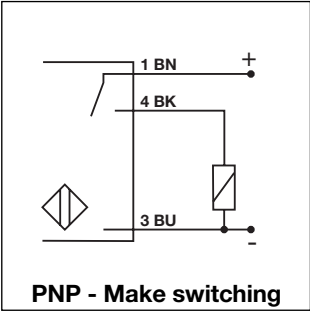
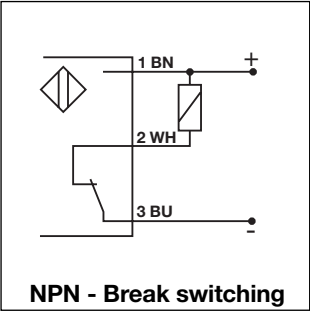
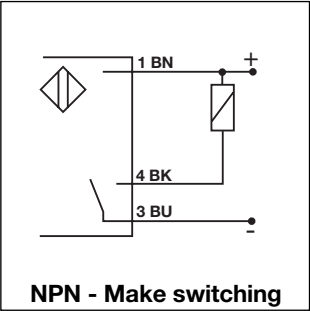
<b>Rated operational volt. (U<sub>B</sub>)</b>	10 to 30 VDC (ripple included)	<b>Sensing distance</b>	IC 17: 4 mm ID 25: 2 mm
<b>Ripple</b>	≤ 10%	<b>Effective operating dist. (S<sub>r</sub>)</b>	0.9 x S <sub>n</sub> ≤ S <sub>r</sub> ≤ 1.1 x S <sub>n</sub>
<b>Rated operational current (I<sub>a</sub>)</b> Continuous	IC17: ≤ 100 mA @ 25°C ID25: ≤ 150 mA @ 25°C	<b>Usable operating dist. (S<sub>u</sub>)</b>	0.85 x S <sub>r</sub> ≤ S <sub>u</sub> ≤ 1.15 x S <sub>r</sub>
<b>No-load supply current (I<sub>o</sub>)</b> IC 17 ID 25	≤ 12 mA (ON) ≤ 18 mA (ON)	<b>Ambient temperature</b> Operating Storage	-25° to +70°C (-13° to +158°F) -30° to +75°C (-22° to +167°F)
<b>Voltage drop (U<sub>d</sub>)</b> IC 17 ID 25	< 1 V (@ I <sub>max</sub> ) < 2.2 V (@ I <sub>max</sub> )	<b>Degree of protection</b>	IP 67 (Nema 1, 3, 4, 6, 13)
<b>Protection</b> IC 17 ID 25	None Short-circuit	<b>Housing material</b>	Plast
<b>Frequency of op. cycles (f)</b> IC 17 ID 25	500 Hz 800 Hz	<b>CE-marking</b>	Yes
<b>Indication for output ON</b>	LED, yellow	<b>Connection</b>	Cable, 2 m, PVC, AWG 26 or Plug M8, CONH5A-xxx serie plug versions only ID 25)



Dimensions



Wiring Diagrams



Installation Hints

