

Series M50 Diode

60-100 Amp • DIODE Modules

CRYDOM

Control over power

- **High Surge Current Rectifier Circuits**
- **Up to 1600 Volt Blocking Standard**

Single- and three-phase diode circuits incorporate highly efficient thermal management to provide high surge capability, extended life, and reliable performance. Available in five circuits, all models come in an industry standard package, provide 2500 Vrms from all terminals to the baseplate, and are UL recognized (file no. E72445).

Manufactured in Crydom's ISO 9002 Certified facility for optimum product performance and reliability.

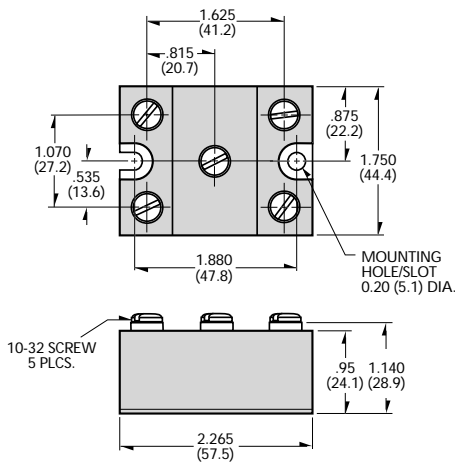
PART NUMBER IDENTIFICATION

| Series Type | Current | Circuit Type | Voltage | |
|-------------|----------------|--------------------------|---------------|---------------|
| M50 | 60 - 60 Amps | (see schematic diagrams) | 400 (120Vac) | 1200 (480Vac) |
| | 100 - 100 Amps | Example: TB | 600 (240Vac) | 1400 (530Vac) |
| | | | 1000 (380Vac) | 1600 (600Vac) |

Example: M50 100TB1200

MECHANICAL DIMENSIONS

All dimensions are in inches (millimeters)



ELECTRICAL SPECIFICATIONS

SYMBOL SPECIFICATION

RATINGS

M5060

M50100

| SYMBOL | SPECIFICATION | M5060 | M50100 |
|-----------------|--|--|-----------------------|
| I_D | Maximum DC Output Current ($T_c = 85^\circ$) | 60A | 100A |
| V_F | Maximum Voltage Drop @ Amps Peak | 1.35V @ 60A | 1.2V @ 100A |
| T_J | Operating Junction Temperature Range | -40 $^\circ$ to +125 $^\circ$ | |
| V_{RRM} | (Repetitive Peak Reverse Voltage (AC Line)) | 400 (120 Vac) 600 (240 Vac) 1000 (380 Vac) 1200 (480 Vac) 1400 (530 Vac) 1600 (600 Vac) | |
| I_{TSM} | Maximum Non-Repetitive Surge Current (1/2 Cycle, 60Hz) | 800A | 1500A |
| I^2T | Maximum I^2T for Fusing ($t=8.3ms$) [A^2sec] | 2650 | 9350 |
| $R_{\theta JC}$ | Maximum Thermal Resistance Junction to Ceramic Base per Chip | 0.45 $^\circ$ /W | 0.3 $^\circ$ /W |
| V_{ISOL} | Isolation Voltage | 2500 V _{RMS} | 2500 V _{RMS} |

MECHANICAL SPECIFICATIONS

Weight: (typical)

4.5 oz. (158g)

©2002 CRYDOM CORP Specifications subject to change without notice.

For recommended applications and more information contact:

USA: Sales Support (877) 502-5500 Tech Support (877) 702-7700 FAX (619) 710-8540
Crydom Corp, 2320 Paseo de las Americas, Ste. 201, San Diego, CA 92154

Email: sales@crydom.com WEB SITE: <http://www.crydom.com>

UK: +44 (0)1202 365070 • FAX +44 (0)1202 365090 Crydom International Ltd., 7 Cobham Road, Ferndown Industrial Estate, Ferndown, Dorset BH21 7PE, Email: intsales@crydom.com.

GERMANY: +49 (0)180 3000 506



CRYDOM

Control over power

Series M50 Diode

60-100 Amp • DIODE Modules

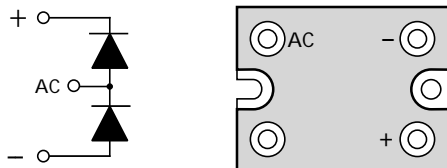
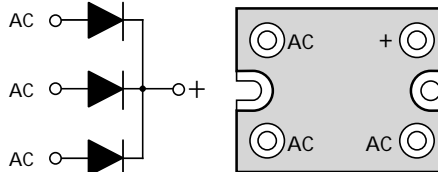
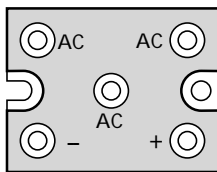
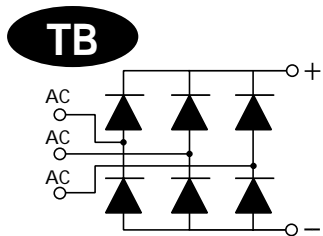
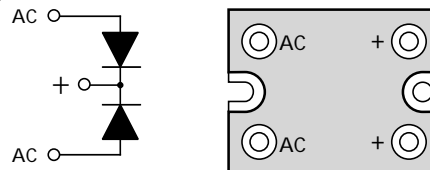
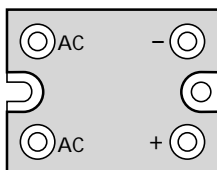
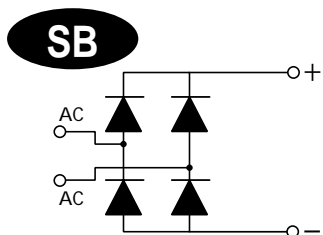
- High Surge Current Rectifier Circuits
- Up to 1600 Volt Blocking Standard

PART NUMBER IDENTIFICATION

| Series Type | Current | Circuit Type | Voltage | |
|-------------|----------------|--------------------------|---------------|---------------|
| M50 | 60 - 60 Amps | (see schematic diagrams) | 400 (120Vac) | 1200 (480Vac) |
| | 100 - 100 Amps | Example: TB | 600 (240Vac) | 1400 (530Vac) |
| | | | 1000 (380Vac) | 1600 (600Vac) |

Example: M50 100TB1200

M50 DIODE CIRCUITS



©2002 CRYDOM CORP Specifications subject to change without notice.

