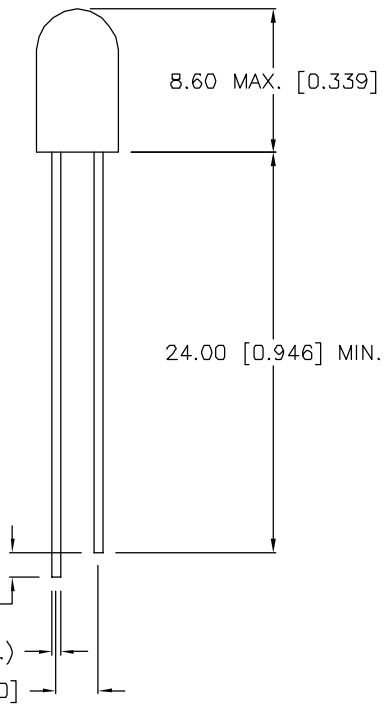
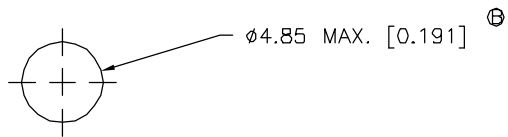


DATE	REVISIONS	REV
7-1-92	REDRAWN, CHG'D MIN AX. INT. TO 1.0 FROM 2.0 mcd/.	A
9-16-92	REDRAWN, CHG'D. DIA FROM 4.8 TO 4.85 MAX./	B
9-12-95	REDRAWN, UPDATED SAFE OPER. SPECS./	C

DRAWING NUMBER SSL-LX509F3LID	REV C
----------------------------------	----------



ELECTRO-OPTICAL CHARACTERISTICS  $T_A = 25^\circ\text{C}$   $I_f = 20\text{mA}$

PARAMETER	MIN	TYP	MAX	UNITS	TEST COND
PEAK WAVELENGTH		635 (RED)		nm	
FORWARD VOLTAGE		1.9	2.7	$V_f$	
REVERSE VOLTAGE	5.0			$V_r$	$I_f = 100\mu\text{A}$
AXIAL INTENSITY		20		mcd	$I_f = 20\text{mA}$
VIEWING ANGLE	Ⓐ1.0	80		2x theta	$I_f = 2\text{mA}$
EMITTED COLOR	RED				
EPOXY LENS FINISH	RED	DIFFUSED			

Ⓒ LIMITS OF SAFE OPERATION AT  $25^\circ\text{C}$

PARAMETER	MAX	UNITS
PEAK FORWARD CURRENT*	150	mA
STEADY CURRENT	30	mA
POWER DISSIPATION	105	mW
DERATE FROM $25^\circ\text{C}$	-1.2	mW/ $^\circ\text{C}$
OPERATING, STORAGE TEMP	-40 TO +85	$^\circ\text{C}$
LEAD SOLDERING TEMP	+260	$^\circ\text{C}$
2.0mm FROM BODY		3 SEC. MAX

\*  $t < 10\mu\text{s}$

RELIABILITY NOTE

OUR MANY YEARS OF EXPERIENCE DATA ACCUMULATION INDICATE THAT SOLDER HEAT IS A MAJOR CAUSE OF EARLY AND FUTURE FAILURE. PLEASE PAY ATTENTION TO YOUR SOLDERING PROCESS.

<b>LUMEX</b> OPTO COMPONENTS INC.		292 E. HELLEN ROAD PALATINE, ILLINOIS 60067 (708) 359-2790	
CONFIDENTIAL INFORMATION THE INFORMATION CONTAINED IN THIS DOCUMENT IS THE PROPERTY OF LUMEX OPTO/COMPONENTS, INC. EXCEPT AS SPECIFICALLY AUTHORIZED IN WRITING BY LUMEX OPTO/COMPONENTS, INC., THE HOLDER OF THIS DOCUMENT SHALL KEEP ALL INFORMATION CONTAINED HEREIN CONFIDENTIAL AND SHALL PROTECT SAME IN WHOLE OR IN PART FROM DISCLOSURE AND DISSEMINATION TO ALL THIRD PARTIES.			
DATE: 5-2-92	DWN:	CHK'D:	APPD:
SCALE: N/A			
T-5 (T-1 3/4) FLANGELESS LED, RED DIFFUSED SPECIAL LOW CURRENT SELECTED			
PAGE 1 OF 1	DRAWING NUMBER SSL-LX509F3LID		REV C