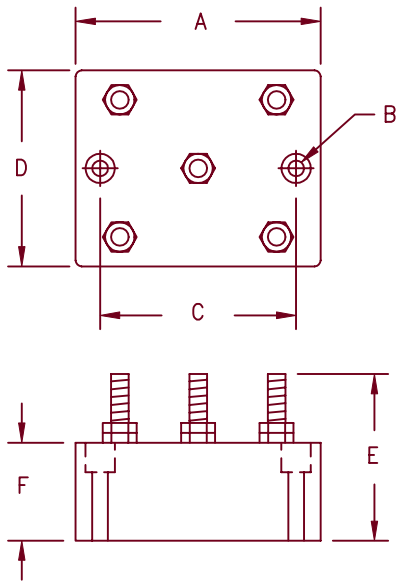


Encapsulated Assemblies EH Series



Dimensions			
	Inches	Millimeters	Notes
A	2.25	57.2	
B	---	---	1
C	1.75	44.5	
D	1.75	44.5	
E	1.313	33.35	
F	.875	22.23	

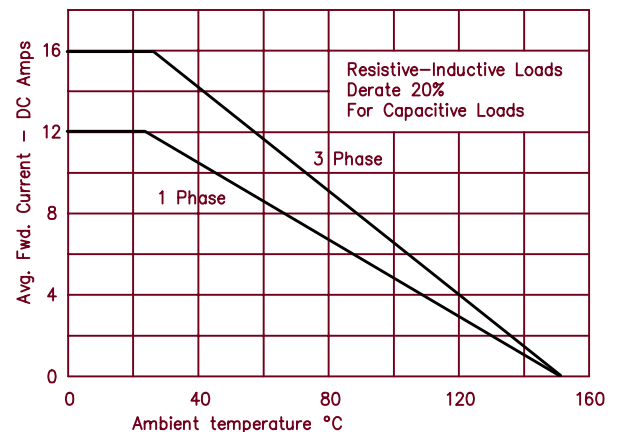
Note 1: Mounting hole .172 (4.37 mm) Dia.

Microsemi Catalog Number		Max. PRV Rating Per Circuit Arm
Single Phase	Three Phase	
EH*2B1	EH*2Z1	200V
EH*4B1	EH*4Z1	400V
EH*6B1	EH*6Z1	600V
EH*8B1	EH*8Z1	800V
EH*10B1	EH*10Z1	1000V
EH*12B1	EH*12Z1	1200V
EH*14B1	EH*14Z1	1400V
EH*16B1	EH*16Z1	1600V

*Add S for Stud Terminal or F for Faston Terminal

- High current encapsulated assembly
- Single and three phase bridges available
- Full Wave Bridge rating of 1600V PRV
- Completely sealed, compact, corrosion and moisture resistant

Electrical Characteristics	
Circuit:	Single phase and three phase full wave bridge
AC Input:	Up to 1600 PRV
DC Output:	1 Phase Up to 12 Amps DC (25°C Amb.-Chassis mounted) 3 Phase Up to 16 Amps DC (25°C Amb.-Chassis mounted)
Surge Current	250 Amps peak for one cycle
Loads:	Resistive, Inductive, Capacitive, Continuous
Duty Cycle:	Continuous
Cooling:	Convection
Design Features:	The diodes are housed in an epoxy sealed case Convenient faston or stud terminals as specified.
Mounting Torque:	30 inch pounds maximum—base and terminal



2-15-02 Rev. 2