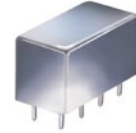


Plug-In Frequency Mixer

SRA-3H+

Level 17 (LO Power +17 dBm) 0.05 to 200 MHz



CASE STYLE: A01
PRICE: \$27.20 ea. QTY (1-9)

Maximum Ratings

Operating Temperature	-55°C to 100°C
Storage Temperature	-55°C to 100°C
RF Power	200mW
IF Current	40mA

Pin Connections

LO	8
RF	1
IF	3,4 [^]
GROUND	2,5,6,7
CASE GROUND	2

[^] pins must be connected together externally

Features

- excellent conversion loss, 5.18 dB typ.
- high L-R isolation, 40 dB typ. L-I isolation, 40 dB typ.
- rugged welded construction
- hermetic

Applications

- VHF/UHF
- FM broadcast radio
- maritime communications
- defense & federal communications

+ RoHS compliant in accordance with EU Directive (2002/95/EC)

The +Suffix has been added in order to identify RoHS Compliance. See our web site for RoHS Compliance methodologies and qualifications.

Electrical Specifications

FREQUENCY (MHz)		CONVERSION LOSS (dB)				LO-RF ISOLATION (dB)						LO-IF ISOLATION (dB)					
LO/RF f_L - f_U	IF	Mid-Band m		Total Range Max.	Total Range Max.	L		M		U		L		M		U	
		\bar{X}	σ			Typ.	Min.	Typ.	Min.	Typ.	Min.	Typ.	Min.	Typ.	Min.	Typ.	Min.
0.05-200	DC-200	5.18	.05	7.0	7.5	50	45	40	30	35	25	45	35	40	30	30	20

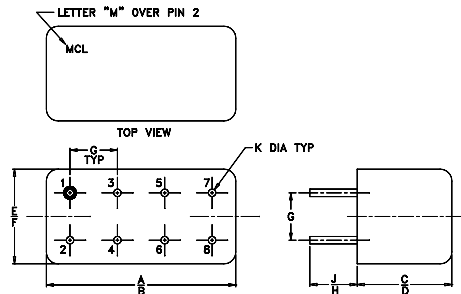
1 dB COMP.: +10 dBm typ.

L = low range [f_L to $10 f_L$]
m = mid band [$2 f_L$ to $f_U/2$]

M = mid range [$10 f_L$ to $f_U/2$]

U = upper range [$f_U/2$ to f_U]

Outline Drawing



NOTE: BLUE BEAD INDICATES PIN 1. PIN NUMBERS DO NOT APPEAR ON UNIT, FOR REFERENCE ONLY.

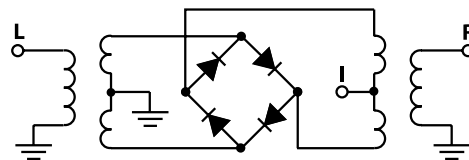
Outline Dimensions (inch/mm)

A	B	C	D	E	F
.770	.800	.385	.400	.370	.400
19.56	20.32	9.78	10.16	9.40	10.16
G	H	J	K		wt
.200	.20	.14	.031		grams
5.08	5.08	3.56	0.79		5.2

Typical Performance Data

Frequency (MHz)		Conversion Loss (dB)	Isolation L-R (dB)	Isolation L-I (dB)	VSWR RF Port (:1)	VSWR LO Port (:1)
RF	LO	LO +17dBm	LO +17dBm	LO +17dBm	LO +17dBm	LO +17dBm
0.05	30.05	5.79	61.52	58.47	1.22	2.35
0.20	30.20	5.33	61.30	55.83	1.23	2.27
1.00	31.00	5.25	61.00	55.41	1.22	2.14
5.00	35.00	5.18	58.85	54.15	1.21	2.17
10.00	40.00	5.36	54.85	51.92	1.20	2.19
20.00	50.00	5.40	48.89	47.33	1.20	2.19
41.42	71.42	5.37	41.07	40.89	1.19	2.18
50.00	80.00	5.37	39.79	39.78	1.18	2.27
69.00	99.00	5.34	39.34	38.19	1.15	2.20
89.68	59.68	5.33	38.45	35.45	1.15	2.21
103.47	73.37	5.34	36.25	36.39	1.13	2.14
110.37	80.37	5.37	35.73	35.84	1.13	2.07
117.26	87.26	5.38	35.17	35.59	1.11	2.12
131.05	101.05	5.40	34.48	35.04	1.10	2.15
137.95	107.95	5.42	33.95	34.10	1.10	2.24
151.74	121.74	5.50	32.91	31.97	1.11	2.21
165.53	135.53	5.66	31.97	30.09	1.12	2.17
179.31	149.31	5.76	31.41	28.67	1.14	2.13
193.10	163.10	5.77	31.62	28.17	1.17	2.20
200.00	170.00	5.75	32.02	28.21	1.19	2.23

Electrical Schematic



Performance Charts

SRA-3H+

