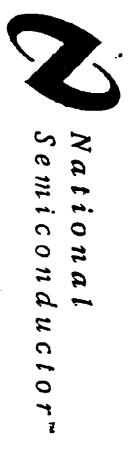


-519.509.-

Pro Electron Series



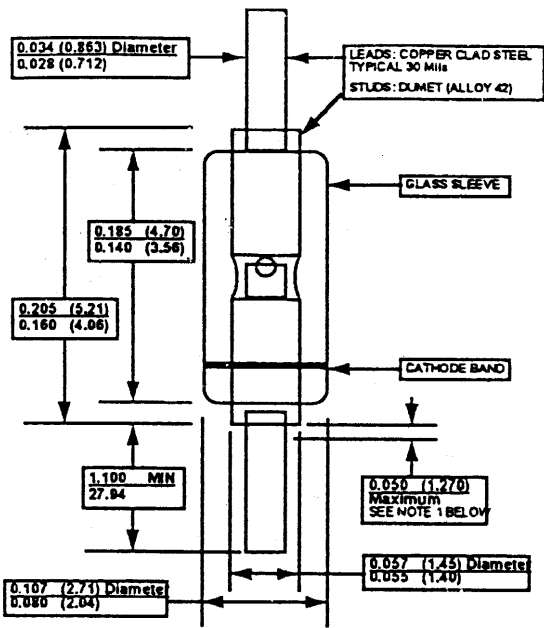
JFET Pro Electron Series

Discrete POWER & Signal Technologies

Device No.	Case Style	$V_{BSS}$ (V) @ $I_g$ Min ( $\mu A$ )	$I_{BSS}$ (nA) @ $V_{Dg}$ Max (V)	$V_p$ (V) @ $V_{GS}$ Min Max (V)	$I_D$ (nA)	$V_{GS}$ (V) @ $V_{GS}$ Min Max (V)	$I_D$ ( $\mu A$ )	$I_{BSS}$ (mA) @ $V_{DS}$ Min Max (V)	$R_o   Y_{fs}  $ (mmho) @ Fq. Min Max (MHz)	$C_{iss}$ (pF) @ $V_{DS}$ Max (V)	$C_{rss}$ (pF) @ $V_{DS}$ Max (V) $V_{GS}$ (V)	NF (dB) @ $R_g = 1k$ Freq. (MHz)	Pro. No.	Pkg. No.
BF244A	TO-92	30	5	0.5 8	10	0.4 2.2	200	2 6.5	3 6.5	4 20	1.1 20	1.5 100	50	94
BF244B	TO-92	30	5	0.5 8	10	1.6 3.8	200	6 15	3 6.5	4 20	1.1 20	1.5 100	50	94
BF244C	TO-92	30	5	0.5 8	10	3.2 7.5	200	12 25	3 6.5	4 20	1.1 20	1.5 100	50	94
BF245A	TO-92	30	5	0.5 8	10	0.4 2.2	200	2 6.5	3 6.5	4 20	1.1 20		50	97
BF245B	TO-92	30	5	0.5 8	10	1.6 3.8	200	6 15	3 6.5	4 20	1.1 20		50	97
BF245C	TO-92	30	5	0.5 8	10	3.2 7.5	200	12 25	3 6.5	4 20	1.1 20		50	97
BF256A	TO-92	30	5		10	0.5 7.5	200	3 7	4.5		0.7 20	7.5 800	50	97
BF256B	TO-92	30	5		10	0.5 7.5	200	6 13	4.5		0.7 20	7.5 800	50	97
BF256C	TO-92	30	5		10		200	11 18	4.5		0.7 20	7.5 800	50	97
BSR56	TO-236	40	1	4 10	1		50	50 100			5 10		51	49
BSR57	TO-236	40	1	2 6	1		20	20 100			5 10		51	49
BSR58	TO-236	40	1	0.8 4	1		8	80 15			5 10		51	49

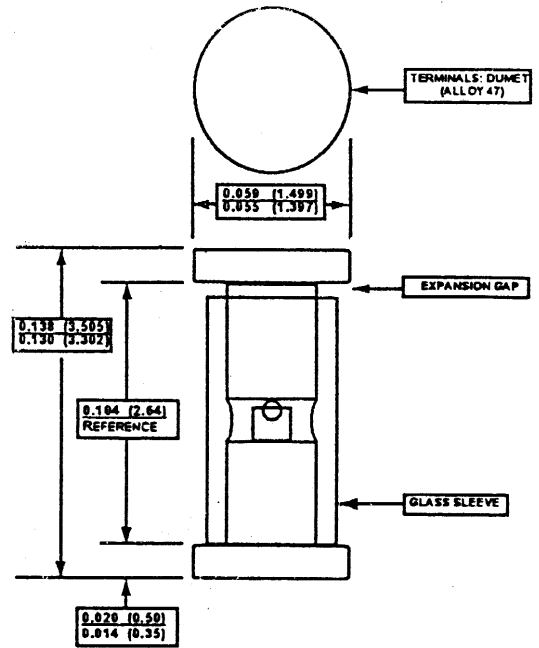
519509  
BF 256A

DO-41 (D4)

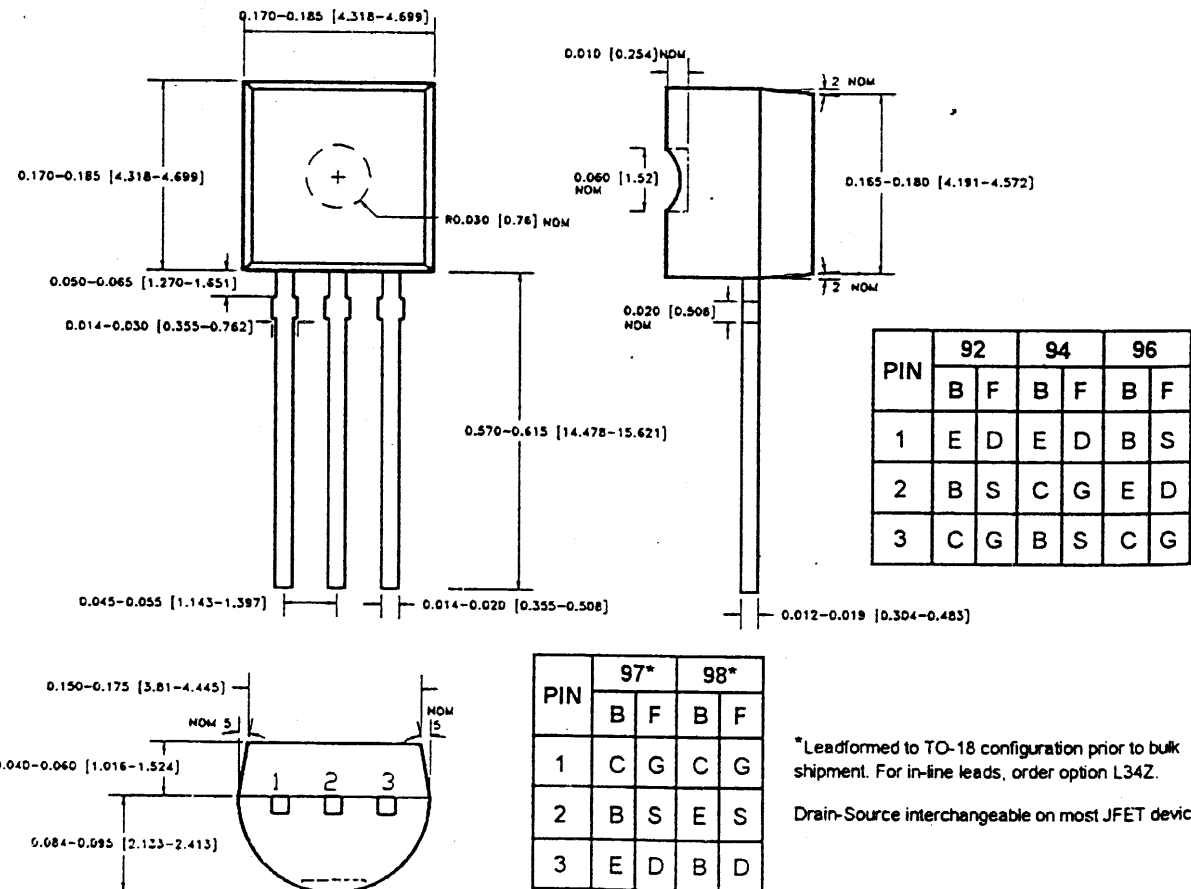


NOTE 1: Lead diameter is not controlled in this zone, allowing for flash, lead finish build-up and minor irregularities other than slugs.

LL-34 (D3)



TO-92 (92, 94, 96, 97\*, 98\*)



\*Leadformed to TO-18 configuration prior to bulk shipment. For in-line leads, order option L34Z.  
 Drain-Source interchangeable on most JFET devices.