

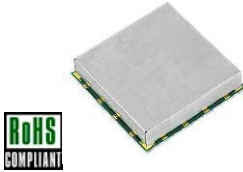
VOLTAGE CONTROLLED OSCILLATOR SURFACE MOUNT MODEL: MFC2931-5

OPTIMIZED BANDWIDTH

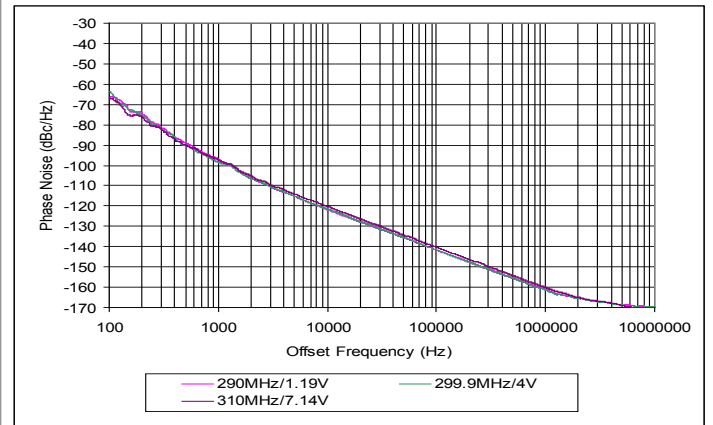
290 - 310 MHz

FEATURES:

- ▶ Exceptional Phase Noise Performance
- ▶ Small Size, Surface Mount
- ▶ Lead Free REL-PRO® Technology



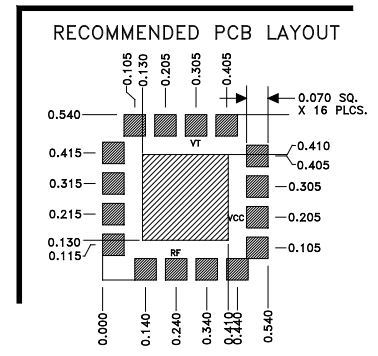
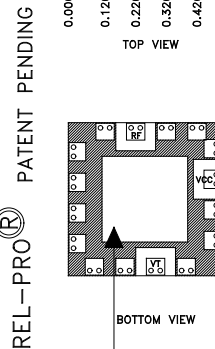
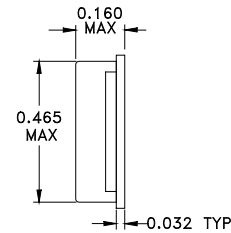
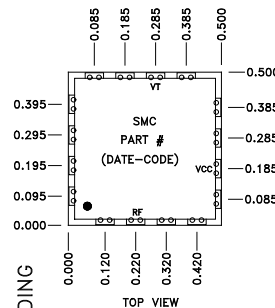
Phase Noise



SPECIFICATIONS

Frequency	290 - 310 MHz
Tuning Voltage (Full Band)	0.5 - 10 VDC
Bias Voltage	+5 VDC @ 30 mA (Max.)
Output Power	+4 dBm (Min.)
Tuning Sensitivity	3 - 5 MHz/V (Typ.)
Output Impedance	50 Ohms (Nom.)
Harmonic Suppression	25 dBc (Typ.)
Frequency Pulling	5 MHz (Typ. @ 1.75:1 VSWR)
Frequency Pushing	2 MHz/V (Typ.)
Phase Noise @ 10 kHz	-121 dBc/Hz (Typ.)
Operating Temperature Range	-40 to +85 °C

Package # 278LF



Guaranteed Tuning Specifications

Tuning Voltage (V)	Frequency (MHz)
0.5	290 (Max)
5	300 (Min)
8	305 (Min)
10	310 (Min)

OPTIONAL SOLDER AREA FOR HIGH VIBRATION ENVIRONMENT

TOLERANCES ON THREE DECIMAL PLACES= ± 0.015

PACKAGE MOUNTING: SEE APPLICATION NOTE AN7200

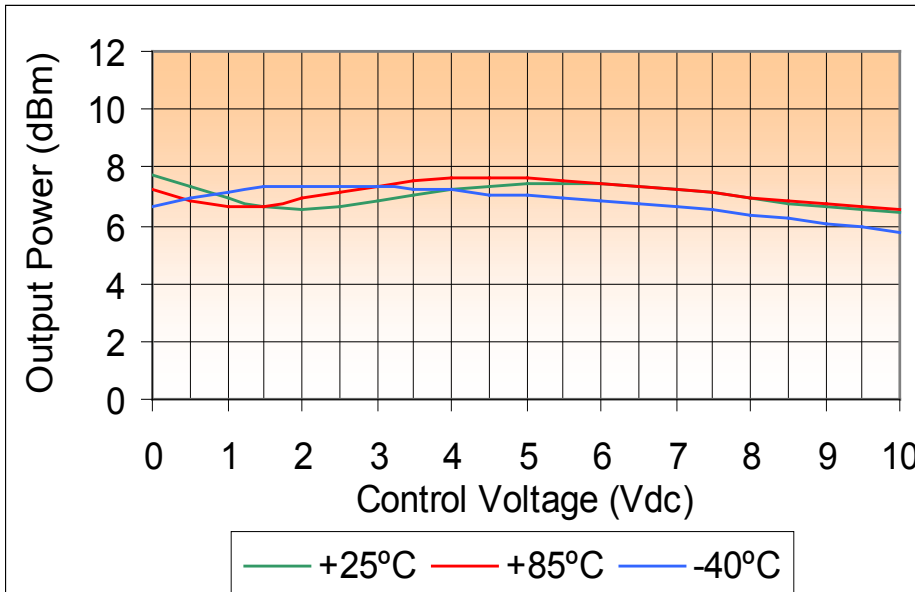
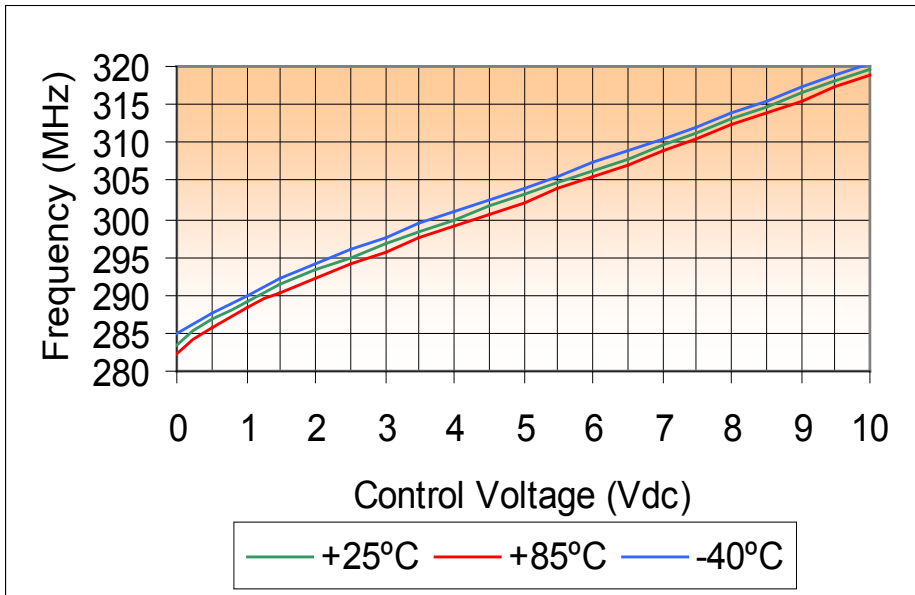
ALL UNLABELED PINS TO BE GROUNDING.

VOLTAGE CONTROLLED OSCILLATOR SURFACE MOUNT MODEL: MFC2931-5

OPTIMIZED BANDWIDTH

290 - 310 MHz

PERFORMANCE PLOTS



VOLTAGE CONTROLLED OSCILLATOR SURFACE MOUNT MODEL: MFC2931-5

OPTIMIZED BANDWIDTH

290 - 310 MHz

PERFORMANCE PLOTS

