

# TRANSFORMERS



## LEADLESS SURFACE-MOUNT MODELS

IMPEDANCE RATIO PRI : SEC	CENTER TAP		FREQUENCY (MHz)	BANDWIDTH (MHz) for INSERTION-LOSS			FIGURE (See Below)	PACKAGE	PIN-OUT (See Below)	MODEL
	PRI	SEC		1dB	2dB	3dB				
1:1	No	Yes	0.003-300	0.02-50	0.01-150	0.003-300	1	134	1	ST-K1
1:1.5	No	No	0.075-400	0.370-185	0.120-300	0.075-400	2	134	2	ST-K2
1:2	No	No	0.650-525	-	2.2-400	0.650-525	2	134	2	ST-K3
1:2.5	No	Yes	0.070-300	0.780-175	0.140-225	0.070-300	1	134	1	ST-K4
1:3	No	No	0.270-500	3.6-160	0.490-430	0.270-500	2	134	2	ST-K5
1:4	No	Yes	0.2-350	2-100	0.35-300	0.2-350	1	134	1	ST-K6
1:5	No	Yes	0.3-300	0.5-100	0.6-200	0.3-300	1	134	1	ST-K7
1:6	No	No	0.3-200	5-50	0.5-150	0.3-200	2	134	2	ST-K8

**NOTE:** All devices shown have 1 Watt Power Rating  
Temperature range for plastic package is -25°C to +85°C

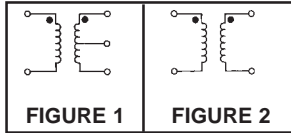


FIGURE 1

FIGURE 2

PIN-OUT TABLE

	Primary DOT	Primary	Primary Center-Tap	Secondary DOT	Secondary	Secondary Center-Tap
# 1	4	6	-	3	1	2
# 2	4	6	-	3	1	-

For pin location and package outline drawings, see back pages.

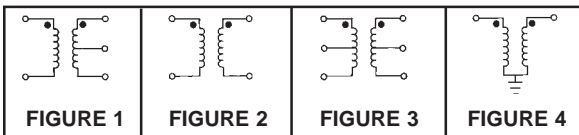
# TRANSFORMERS



## LEADED SURFACE-MOUNT MODELS

IMPEDANCE RATIO PRI : SEC	CENTER TAP		FREQUENCY (MHz)	BANDWIDTH (MHz) for INSERTION-LOSS			FIGURE (See Below)	PACKAGE	PIN-OUT (See Below)	MODEL
	PRI	SEC		1dB	2dB	3dB				
1:1	No	Yes	0.04-140	0.100-55	0.05-100	0.04-140	1	156	1	TW-207
1:1	No	Yes	0.05-200	0.2-80	0.08-150	0.05-200	1	156	1	TW-2Q2
1:1	No	Yes	0.003-300	0.02-50	0.01-150	0.003-300	1	156	1	TW-2A2
1:1	No	Yes	5-450	12-150	7-300	5-450	1	156	1	TW-206
1:1	No	No	0.028-1000	0.055-450	0.035-900	0.028-1000	2	156	2	TW-205
1:1	No	No	9-1200	20-150	12-790	9-1200	2	156	2	TW-204
1:1.5	No	Yes	0.480-175	2-54	0.135-120	0.480-175	1	156	1	TW-209
1:1.5	No	No	0.075-400	0.370-185	0.120-300	0.075-400	2	156	2	TW-208
1:1.5	No	No	0.100-400	0.250-200	0.140-300	0.100-400	2	156	2	TW-211
1:1.5	Yes	Yes	0.075-500	1-50	0.2-100	0.075-500	3	156	3	TW-2A3
1:2	No	Yes	0.060-250	1.7-55	0.100-190	0.060-250	1	156	1	TW-216
1:2	No	No	0.100-275	1-85	0.200-195	0.100-275	2	156	2	TW-215
1:2	No	No	0.650-525	-	2.2-400	0.650-525	2	156	2	TW-210
1:2	No	No	0.050-600	0.5-200	0.1-400	0.050-600	4	156	4	TW-2A4
1:2.5	No	Yes	0.01-100	0.50-20	0.02-50	0.01-100	1	156	1	TW-2A1
1:2.5	No	Yes	0.070-300	0.780-175	0.140-225	0.070-300	1	156	1	TW-219
1:2.5	No	Yes	0.300-300	-	0.700-200	0.300-300	1	156	1	TW-218
1:2.5	No	No	0.230-495	4.8-175	0.400-425	0.230-495	2	156	2	TW-217
1:3	No	Yes	0.05-250	0.5-70	0.1-200	0.05-250	1	156	1	TW-2B2
1:3	No	Yes	0.080-340	0.550-150	0.160-295	0.080-340	1	156	1	TW-220
1:3	No	No	0.270-500	3.6-160	0.490-430	0.270-500	2	156	2	TW-225
1:4	No	No	0.02-200	0.1-100	0.05-150	0.02-200	2	156	2	TW-2C2
1:4	No	No	0.115-200	12-50	0.240-155	0.115-200	2	156	2	TW-227
1:4	No	Yes	0.245-425	5.5-215	0.475-350	0.245-425	1	156	1	TW-226
1:4	No	Yes	0.2-350	2-100	0.35-300	0.2-350	1	156	1	TW-2C3
1:5	No	Yes	0.3-300	0.5-100	0.6-200	0.3-300	1	156	1	TW-2E2
1:8	No	No	0.15-250	2-100	0.25-200	0.15-250	4	156	4	TW-2G2
1:9	No	No	0.15-200	2-40	0.3-150	0.15-200	2	156	2	TW-2D2
1:13	No	Yes	0.3-120	5-20	0.7-80	0.3-120	1	156	1	TW-2F2
1:16	No	No	0.3-120	5-20	0.7-80	0.3-120	2	156	2	TW-2H2
1:36	No	No	0.03-20	0.1-5.0	0.05-10	0.03-20	2	156	2	TW-2B1
1:4	No	Yes	0.02-250	0.1-100	0.05-150	0.02-250	1	156	1	TW-2K1

**NOTE:** All devices shown have 1 Watt Power Rating  
Temperature range for plastic package is -25°C to +85°C



For pin location and package outline drawings, see back pages.

PIN-OUT TABLE

	Primary DOT	Primary Center-Tap	Primary Center-Tap	Secondary DOT	Secondary Center-Tap	Secondary Center-Tap
# 1	4	6	-	3	1	2
# 2	4	6	-	3	1	-
# 3	4	6	5	3	1	2
# 4	6	*3	-	1	*3	-

\* Pin must be grounded



# TRANSFORMERS

## MINIATURE 8 PIN - RELAY HEADER



IMPEDANCE RATIO PRI : SEC	CENTER TAP		FREQUENCY (MHz)	BANDWIDTH (MHz) for INSERTION-LOSS			FIGURE (See Below)	PACKAGE	PIN-OUT (See Below)	MODEL
	PRI	SEC		1dB	2dB	3dB				
1:1	No	Yes	0.04-140	0.100-55	0.05-100	0.04-140	1	108	2	TP-207
1:1	No	Yes	5-450	12-150	7-300	5-450	1	108	2	TP-206
1:1	No	No	1-800	-	2-500	1-800	2	108	4	TP-2C4
1:1	No	No	0.028-1000	0.055-450	0.035-900	0.028-1000	2	108	3	TP-205
1:1	No	No	9-1200	20-150	12-790	9-1200	2	108	3	TP-204
1:1.5	No	Yes	0.480-175	2-54	0.135-120	0.480-175	1	108	2	TP-209
1:1.5	No	No	0.1-300	0.5-8	0.2-150	0.1-300	2	108	3	TP-2R2
1:1.5	No	No	0.075-400	0.370-1 85	0.1 20-300	0.075-400	2	108	3	TP-208
1:1.5	No	No	0.100-400	0.250-200	0.140-300	0.100-400	2	108	3	TP-211
1:2	No	Yes	0.07-200	0.5-50	0.1-100	0.07-200	1	108	2	TP-2J2
1:2	No	Yes	0.060-250	1.7-55	0.100-190	0.060-250	1	108	2	TP-216
1:2	No	No	0.100-275	1-85	0.200-195	0.100-275	2	108	3	TP-215
1:2	No	No	0.650-525	-	2.2-400	0.650-525	2	108	3	TP-210
1:2	No	No	0.050-600	0.5-200	0.1-400	0.060-600	4	108	1	TP-2B4
1:2.5	No	Yes	0.070-300	0.780-175	0.140-225	0.070-300	1	108	2	TP-219
1:2.5	No	Yes	0.300-300	-	0.700-200	0.300-300	1	108	2	TP-218
1:2.5	No	No	0.230-495	4.8-175	0.400-425	0.230-495	2	108	3	TP-217
1:3	No	Yes	0.080-340	0.550-150	0.160-295	0.080-340	1	108	2	TP-220
1:3	No	No	0.270-500	3.6-160	0.490-430	0.270-500	2	108	3	TP-225
1:4	No	No	0.115-200	12-50	0.240-155	0.115-200	2	108	3	TP-227
1:4	No	Yes	0.2-350	2-100	0.35-300	0.2-350	1	108	2	TP-2D3
1:4	No	Yes	0.245-425	5.5-215	0.475-350	245-425	1	108	2	TP-226
1:5	No	Yes	0.3-300	5-100	0.6-200	3-300	1	108	2	TP-2M2
1:6	No	No	0.3-200	0.3-200	0.5-150	5-50	2	108	3	TP-2T2
1:8	No	No	0.15-250	2-100	0.25-200	0.15-250	4	108	1	TP-2L2
1:9	No	No	0.15-200	2-40	0.3-150	0.15-200	2	108	3	TP-2N2
1:16	No	No	0.3-120	5-20	0.7-80	0.3-120	2	108	3	TP-2P2

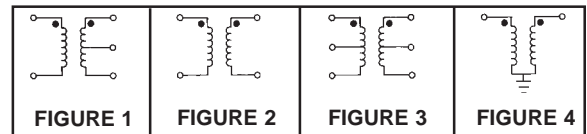
**NOTE:** All devices shown have 1 Watt Power Rating

For pin location and package outline drawings, see back pages.

PIN-OUT TABLE

	Primary DOT	Primary	Primary Center-Tap	Secondary DOT	Secondary	Secondary Center-Tap	Case Ground
#1	1	*6	-	2	*6	-	7,8
#2	1	5	-	2	6	4	7,8
#3	1	5	-	2	6	-	7,8
#4	1	3	-	2	4	-	7,8

\* Pin must be grounded



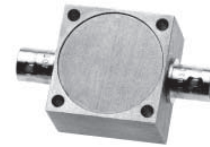
# TRANSFORMERS

## 8 PIN - MINIATURE RELAY HEADER



IMPEDANCE RATIO PRI : SEC	CENTER TAP		FREQUENCY (MHz)	BANDWIDTH (MHz) for INSERTION-LOSS			FIGURE (See Below)	PACKAGE	PIN-OUT (See Below)	MODEL
	PRI	SEC		1dB	2dB	3dB				
1:2.5	No	Yes	0.01-100	0.05-20	0.02-50	0.01-100	1	107	1	TP-2C1
1:4	No	No	0.02-200	0.1-100	0.05-150	0.02-200	2	107	2	TP-2K2

NOTE: All devices shown have 1 Watt Power Rating



## CONNECTORIZED PACKAGE

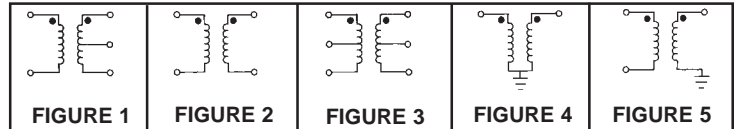
IMPEDANCE RATIO PRI : SEC	CENTER TAP		FREQUENCY (MHz)	BANDWIDTH (MHz) for INSERTION-LOSS			FIGURE (See Below)	PACKAGE	PIN-OUT (See Below)	MODEL
	PRI	SEC		1dB	2dB	3dB				
1:1.5	No	No	0.1-400	5-100	1-200	0.1-400	4	118	4	TK-701B
1:1	No	No	0.01-125	0.1-25	0.05-50	0.01-125	5	118	3	TK-702B
1:1	No	No	0.2-500	1-100	0.5-300	0.2-500	5	118	3	TK-703B

NOTE: All devices shown have 1 Watt Power Rating  
For pin location and package outline drawings, see back pages.

PIN-OUT TABLE

	Primary DOT	Primary	Primary Center-Tap	Secondary DOT	Secondary	Secondary Center-Tap	Case Ground
# 1	1	5	-	2	6	4	7,8
# 2	1	5	-	2	6	-	7,8
# 3	-	Balanced	-	-	Unbalanced	-	-
# 4	1	*6	-	2	*6	-	7,8

\* Pin must be grounded



# TRANSFORMERS

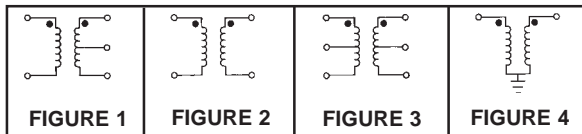


## PLASTIC FLAT-PACK MODELS

IMPEDANCE RATIO PRI : SEC	CENTER TAP		FREQUENCY (MHz)	BANDWIDTH (MHz) for INSERTION-LOSS			FIGURE (See Below)	PACKAGE	PIN-OUT (See Below)	MODEL
	PRI	SEC		1dB	2dB	3dB				
1:1	No	Yes	0.04-140	0.100-55	0.05-100	0.04-140	1	116	1	TX-207
1:1	No	Yes	0.05-200	0.2-80	0.08-150	0.05-200	1	116	1	TX-2Q2
1:1	No	Yes	0.003-300	0.02-50	0.01-150	0.003-300	1	116	1	TX-2A2
1:1	No	Yes	5-450	12-150	7-300	5-450	1	116	1	TX-206
1:1	No	No	0.028-1000	0.055-450	0.035-900	0.028-1000	2	116	4	TX-205
1:1	No	No	9-1200	20-150	12-790	9-1200	2	116	4	TX-204
1:1.5	No	Yes	0.480-175	2-54	0.135-120	0.480-175	1	116	1	TX-209
1:1.5	No	No	0.075-400	0.370-185	0.120-300	0.075-400	2	116	4	TX-208
1:1.5	No	No	0.100-400	0.250-200	0.140-300	0.100-400	2	116	4	TX-211
1:1.5	Yes	Yes	0.075-500	1-50	0.2-100	0.075-500	3	116	3	TX-2A3
1:2	No	Yes	0.060-250	1.7-55	0.100-190	0.060-250	1	116	1	TX-216
1:2	No	No	0.100-275	1-85	0.200-195	0.100-275	2	116	4	TX-215
1:2	No	No	0.650-525	-	2.2-400	0.650-525	2	116	4	TX-210
1:2	No	No	0.050-600	0.5-200	0.1-400	0.050-600	4	116	2	TX-2A4
1:2.5	No	Yes	0.01-100	0.50-20	0.02-50	0.01-100	1	116	1	TX-2A1
1:2.5	No	Yes	0.070-300	0.780-175	0.140-225	0.070-300	1	116	1	TX-219
1:2.5	No	Yes	0.300-300	-	0.700-200	0.300-300	1	116	1	TX-218
1:2.5	No	No	0.230-495	4.8-175	0.400-425	0.230-495	2	116	4	TX-217
1:3	No	Yes	0.05-250	0.5-70	0.1-200	0.05-250	1	116	1	TX-2B2
1:3	No	Yes	0.080-340	0.550-1 50	0.160-295	0.080-340	1	116	1	TX-220
1:3	No	No	0.270-500	3.6-160	0.490-430	0.270-500	2	116	4	TX-225
1:4	No	No	0.02-200	0.1-100	0.05-150	0.02-200	2	116	4	TX-2C2
1:4	No	No	0.115-200	12-50	0.240-1 55	0.115-200	2	116	4	TX-227
1:4	No	Yes	0.245-425	5.5-215	0.475-350	0.245-425	1	116	1	TX-226
1:4	No	Yes	0.2-350	2-100	0.35-300	0.2-350	1	116	1	TX-2C3
1:5	No	Yes	0.3-300	0.5-100	0.6-200	0.3-300	1	116	1	TX-2E2
1:8	No	No	0.15-250	2-100	0.25-200	0.15-250	4	116	2	TX-2G2
1:9	No	No	0.15-200	2-40	0.3-150	0.15-200	2	116	4	TX-2D2
1:13	No	Yes	0.3-120	5-20	0.7-80	0.3-120	1	116	1	TX-2F2
1:16	No	No	0.3-120	5-20	0.7-80	0.3-120	2	116	4	TX-2H2
1:36	No	No	0.03-20	0.1-5.0	0.05-10	0.03-20	2	116	4	TX-2B1

**NOTE:** All devices shown have 1 Watt Power Rating  
Temperature range for plastic package is -25°C to +85°C

PIN-OUT TABLE



	Primary DOT	Primary	Primary Center-Tap	Secondary DOT	Secondary	Secondary Center-Tap
# 1	4	6	-	3	1	2
# 2	6	*3	-	1	*3	-
# 3	4	6	5	3	1	2
# 4	4	6	-	3	1	-

\* Pin must be grounded

For pin location and package outline drawings, see back pages.

