

TOSHIBA BIPOLAR DIGITAL INTEGRATED CIRCUIT SILICON MONOLITHIC

TD62706P-H, TD62706FA-H

6ch HIGH-VOLTAGE SOURCE-CURRENT DRIVER

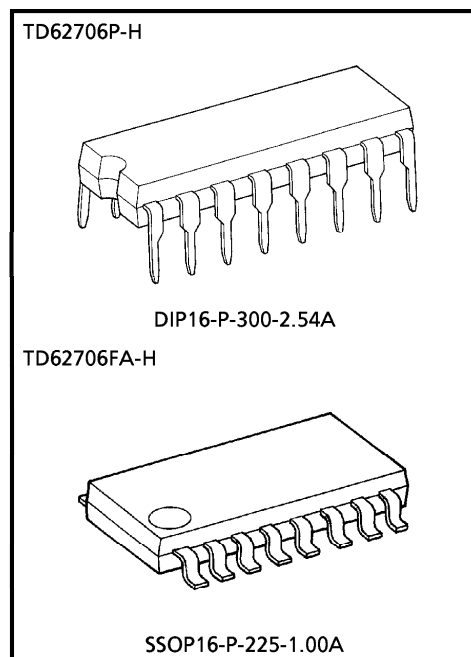
The TD62706P-H and TD62706FA-H are comprised of six source current Transistor Array.

This driver is specifically designed for fluorescent display applications.

For proper operation, the substrate (SUB) must be connected to the most negative voltage.

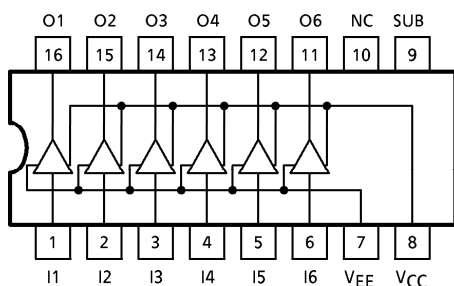
FEATURES

- Package Type
 - P-H Type : DIP16PIN
 - FA-H Type : SSOP16PIN
- High Output Voltage
 - : $V_{CC} - V_{OUT} = 60V$ (MIN)
- Output Current (Single Output)
 - : $I_{OUT} = -50mA$ (MAX)
- Input Compatible with Various Types of Logic
 - : $R_{IN} = 10k\Omega$
- Wide operating temperature range. : $T_{opr} = -40 \sim 105^{\circ}C$



Weight
 DIP16-P-300-2.54A : 1.11g (Typ.)
 SSOP16-P-225-1.00A : 0.14g (Typ.)

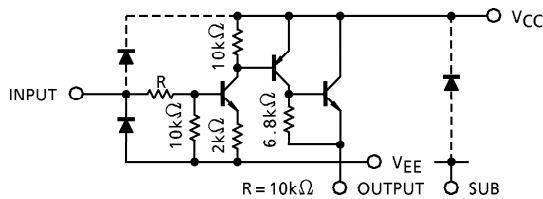
PIN ASSIGNMENT (Top view)



961001EBA1

- TOSHIBA is continually working to improve the quality and the reliability of its products. Nevertheless, semiconductor devices in general can malfunction or fail due to their inherent electrical sensitivity and vulnerability to physical stress. It is the responsibility of the buyer, when utilizing TOSHIBA products, to observe standards of safety, and to avoid situations in which a malfunction or failure of a TOSHIBA product could cause loss of human life, bodily injury or damage to property. In developing your designs, please ensure that TOSHIBA products are used within specified operating ranges as set forth in the most recent products specifications. Also, please keep in mind the precautions and conditions set forth in the TOSHIBA Semiconductor Reliability Handbook.
- The products described in this document are subject to foreign exchange and foreign trade control laws.
- The information contained herein is presented only as a guide for the applications of our products. No responsibility is assumed by TOSHIBA CORPORATION for any infringements of intellectual property or other rights of the third parties which may result from its use. No license is granted by implication or otherwise under any intellectual property or other rights of TOSHIBA CORPORATION or others.
- The information contained herein is subject to change without notice.

SCHEMATICS (Each driver)



(Note) The input and output parasitic diodes cannot be used as clamp diodes.

MAXIMUM RATINGS (Ta = 25°C)

CHARACTERISTIC	SYMBOL	RATING	UNIT
Power Supply Voltage	$V_{CC}-V_{EE}$	30	V
	$V_{CC}-V_{SUB}$	60	
Output Voltage	$V_{CC}-V_{OUT}$	60	V
Input Voltage	$V_{IN}-V_{EE}$	$V_{CC}-V_{EE}$	V
Output Current	I_{OUT}	- 50	mA / ch
Input Current	I_{IN}	± 10	mA
Power Dissipation	P_D (Note 1)	1.0	W
	P_D (Note 2)	0.78	
Operating Temperature	T_{opr}	- 40~105	°C
Storage Temperature	T_{stg}	- 55~150	°C

(Note 1) TD62706P-H : Delated above 25°C in the proportion of 8.0mw / °C.

(Note 2) TD62706FA-H : On Glass Epoxy PCB (50. x 50 x 1.6mm Cu 40%).
Delated above 25°C in the proportion of 6.2mw / °C.

RECOMMENDED OPERATING CONDITIONS (Ta = - 40~85°C)

CHARACTERISTIC	SYMBOL	TEST CONDITION	MIN	TYP.	MAX	UNIT
Power Supply Voltage	V_{CC}	$V_{EE} = 0V$	4.5	—	25	V
	V_{SUB}	$V_{CC} = 0V$	V_{OUT}	—	- 55	
Output Voltage	V_{OUT}	$V_{CC} = 0V$	0	—	- 55	V
Output Current	I_{OUT}	—	0	—	- 40	mA / ch
Input Voltage	V_{IN}	$V_{EE} = 0V, V_{CC} = 25V$	0	—	7	V
Power Dissipation	P_D	TD62706P-H	—	—	0.52	W
		TD62706FA-H when mounting	—	—	0.4	

ELECTRICAL CHARACTERISTICS (Ta = 25°C)

CHARACTERISTIC		SYMBOL	TEST CIR-CUIT	TEST CONDITION	MIN	TYP.	MAX	UNIT
Input Voltage	"H" Level	V _{IH}	1	V _{EE} = 0V	2.2	—	—	V
	"L" Level	V _{IL}		V _{EE} = 0V	—	—	0.8	
Input Current	"H" Level	I _{IH}	2	V _{EE} = 0V, V _{IN} = 2.4V	—	0.12	0.18	mA
	"L" Level	I _{IL}		V _{EE} = V _{IN} = 0V, V _{CC} = 25V	—	—	± 1	
Output Leakage Current		I _{CEX}	3	V _{EE} = 0V, V _{CC} = 25V V _{IN} = V _{IL} MAX., V _{OUT} = -30V	—	—	-100	μA
Collector-Emitter Saturation Voltage		V _{CE (sat)}	4	V _{EE} = 0V, V _{CC} = V _{CC} MIN. V _{IN} = V _{IH} MIN., I _{OUT} = -40mA	—	—	V _{CC} -2.5	V
Supply Current (Output On)		I _{CC (ON)}	1	V _{EE} = 0V, V _{CC} = 25V V _{IN} = V _{IH} MAX., OUTPUT = OPEN	—	—	25	mA
Turn-On Delay		t _{ON}	5	R _L = 1.4kΩ C _L = 15pF	—	0.2	—	μs
Turn-Off Delay		t _{OFF}			—	1.5	—	

RECOMMENDED OPERATING CONDITION (Ta = -40~105°C)

CHARACTERISTIC	SYMBOL	TEST CONDITION		MIN	TYP.	MAX	UNIT
Power Supply Voltage	V _{CC}	V _{EE} = 0V		4.5	—	25	V
	V _{SUB}	V _{CC} = 0V		V _{OUT}	—	-55	
Output Voltage	V _{OUT}	V _{CC} = 0V		0	—	-55	V
Output Current	I _{OUT}	2 Circuits Parallel ON	TD62706P-H	0	—	-40	mA / ch
			TD62706FA-H	0	—	-40	
		4 Circuits Parallel ON	TD62706P-H	0	—	-37	
			TD62706FA-H	0	—	-30	
		6 Circuits Parallel ON	TD62706P-H	0	—	-15	
			TD62706FA-H	0	—	-25	
Input Voltage	V _{IN}	V _{EE} = 0V, V _{CC} = 25V		0	—	7	V
Power Dissipation	P _D	TD62706P-H		—	—	0.36	W
		TD62706FA-H when mounting		—	—	0.28	

ELECTRICAL CHARACTERISTICS (Ta = 105°C) : TD62706P-H

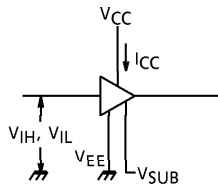
CHARACTERISTIC		SYMBOL	TEST CIR-CUIT	TEST CONDITION	MIN	TYP.	MAX	UNIT
Input Voltage	"H" Level	V _{IH}	1	V _{EE} = 0V	1.8	—	—	V
	"L" Level	V _{IL}		V _{EE} = 0V	—	—	0.6	
Input Current	"H" Level	I _{IH}	2	V _{EE} = 0V, V _{IN} = 2.4V	—	0.12	0.18	mA
	"L" Level	I _{IL}		V _{EE} = V _{IN} = 0V, V _{CC} = 25V	—	—	± 10	μA
Output Leakage Current		I _{CEX}	3	V _{EE} = 0V, V _{CC} = 25V V _{IN} = V _{IL} MAX., V _{OUT} = -30V	—	—	-300	μA
Collector-Emitter Saturation Voltage		V _{CE (sat)}	4	V _{EE} = 0V, V _{CC} = V _{CC} MIN. V _{IN} = V _{IH} MIN., I _{OUT} = -40mA	—	—	V _{CC} -2.5	V
Supply Current (Output On)		I _{CC (ON)}	1	V _{EE} = 0V, V _{CC} = 25V V _{IN} = V _{IH} MAX., OUTPUT = OPEN	—	—	25	mA
Turn-On Delay		t _{ON}	5	R _L = 1.4kΩ, Single circuit C _L = 15pF	—	0.4	—	μs
Turn-Off Delay		t _{OFF}			—	3.0	—	

ELECTRICAL CHARACTERISTICS (Ta = 105°C) : TD62706FA-H

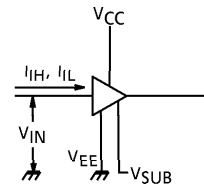
CHARACTERISTIC		SYMBOL	TEST CIR-CUIT	TEST CONDITION	MIN	TYP.	MAX	UNIT
Input Voltage	"H" Level	V _{IH}	1	V _{EE} = 0V	1.8	—	—	V
	"L" Level	V _{IL}		V _{EE} = 0V	—	—	0.6	
Input Current	"H" Level	I _{IH}	2	V _{EE} = 0V, V _{IN} = 2.4V	—	0.12	0.18	mA
	"L" Level	I _{IL}		V _{EE} = V _{IN} = 0V, V _{CC} = 25V	—	—	± 10	μA
Output Leakage Current		I _{CEX}	3	V _{EE} = 0V, V _{CC} = 25V V _{IN} = V _{IL} MAX., V _{OUT} = -30V	—	—	-300	μA
Collector-Emitter Saturation Voltage		V _{CE (sat)}	4	V _{EE} = V _{SUB} = 0V, V _{CC} = V _{CC} MIN. V _{IN} = V _{IH} MIN., I _{OUT} = -25mA	—	—	V _{CC} -1.1	V
Supply Current (Output On)		I _{CC (ON)}	1	V _{EE} = V _{SUB} = 0V, V _{CC} = 16V V _{IN} = V _{IH} MAX., OUTPUT = OPEN	—	—	10	mA
Turn-On Delay		t _{ON}	5	R _L = 1.4kΩ, Single circuit C _L = 15pF	—	0.4	—	μs
Turn-Off Delay		t _{OFF}			—	3.0	—	

TEST CIRCUIT

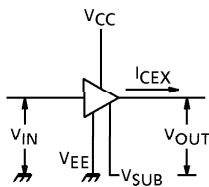
1. V_{IH} , V_{IL} , I_{CC}



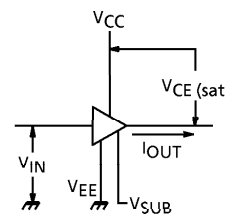
2. I_{IH} , I_{IL}



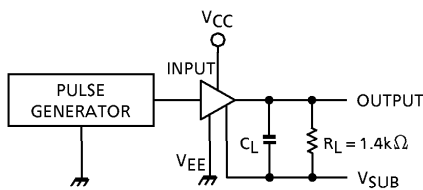
3. I_{CEX}



4. $V_{CE(sat)}$



5. t_{ON} , t_{OFF}



$C_L = 15\text{pF}$
(Includes probe and jig capacitance)

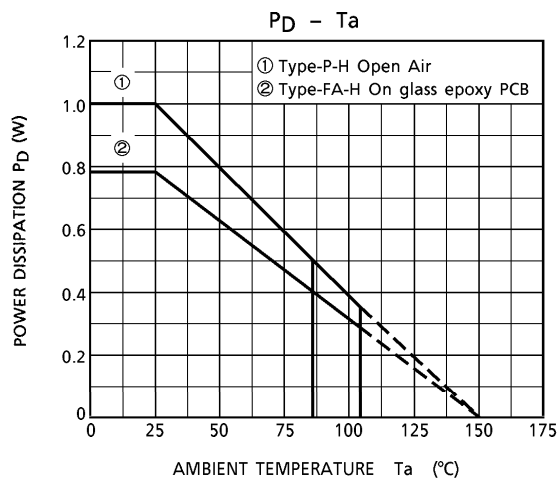
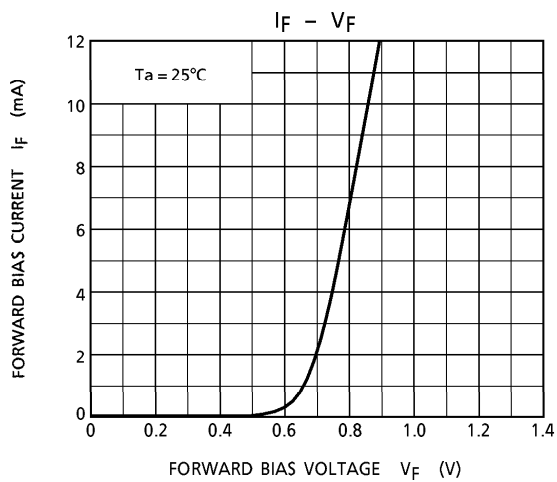
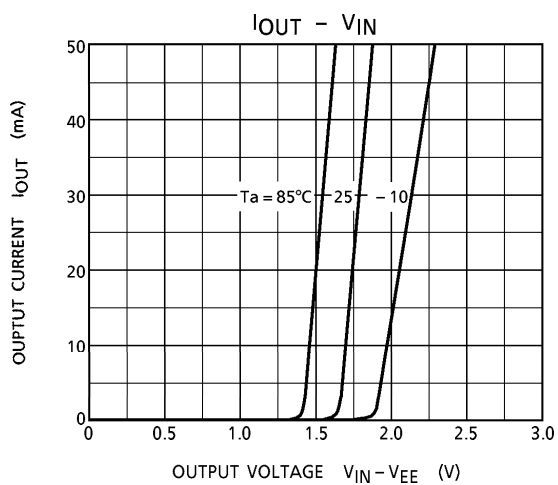
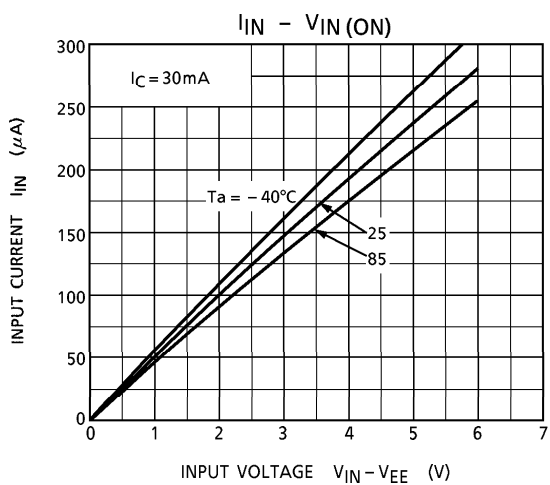
Input condition

	V_{IN}	V_{CC}	V_{SUB}
TD62706	0 - 3V	25V	- 30

V_{IN} : Pulse Width $50\mu\text{s}$
Duty Cycle 50%
 $t_r \leq 5\text{ns}$
 $t_f \leq 10\text{ns}$

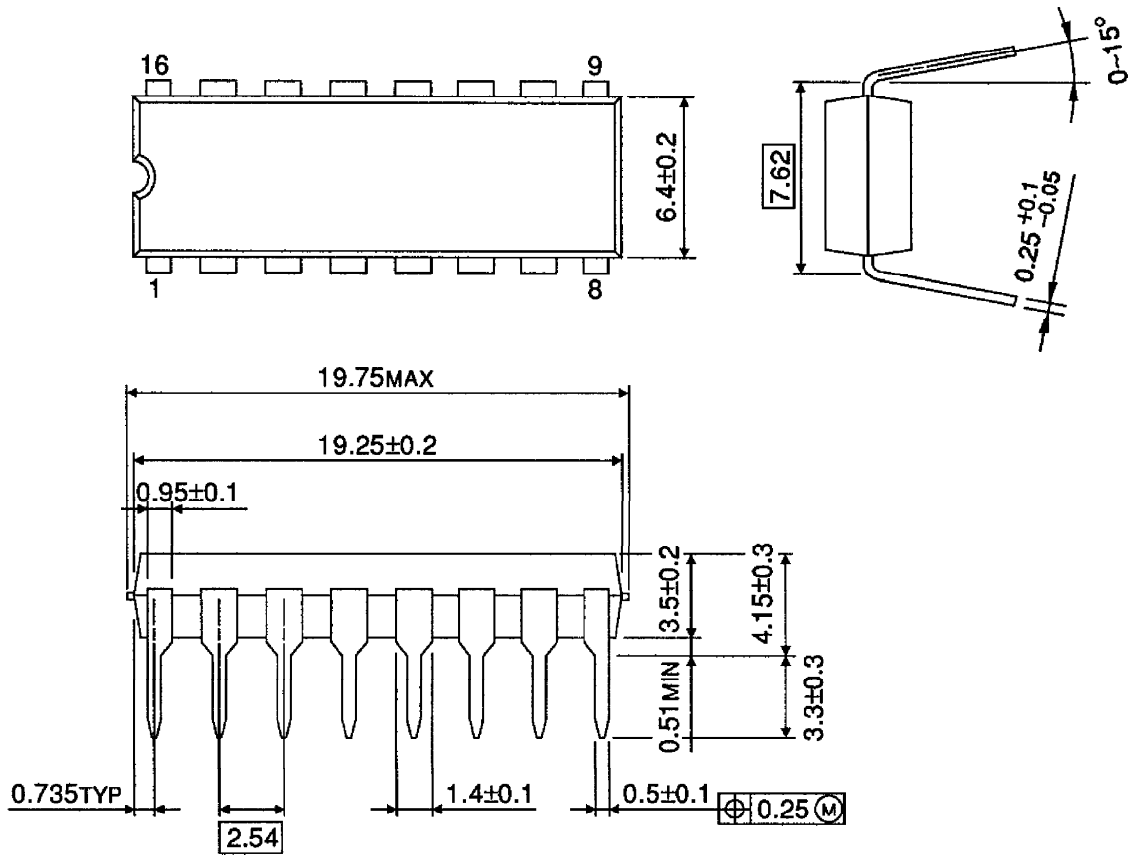
PRECAUTIONS for USING

Utmost care is necessary in the design of the output line, V_{CC} and GND (SUB, V_{EE}) line since IC may be destroyed due to short-circuit between outputs, air contamination fault, or fault by improper grounding.



OUTLINE DRAWING
DIP16-P-300-2.54A

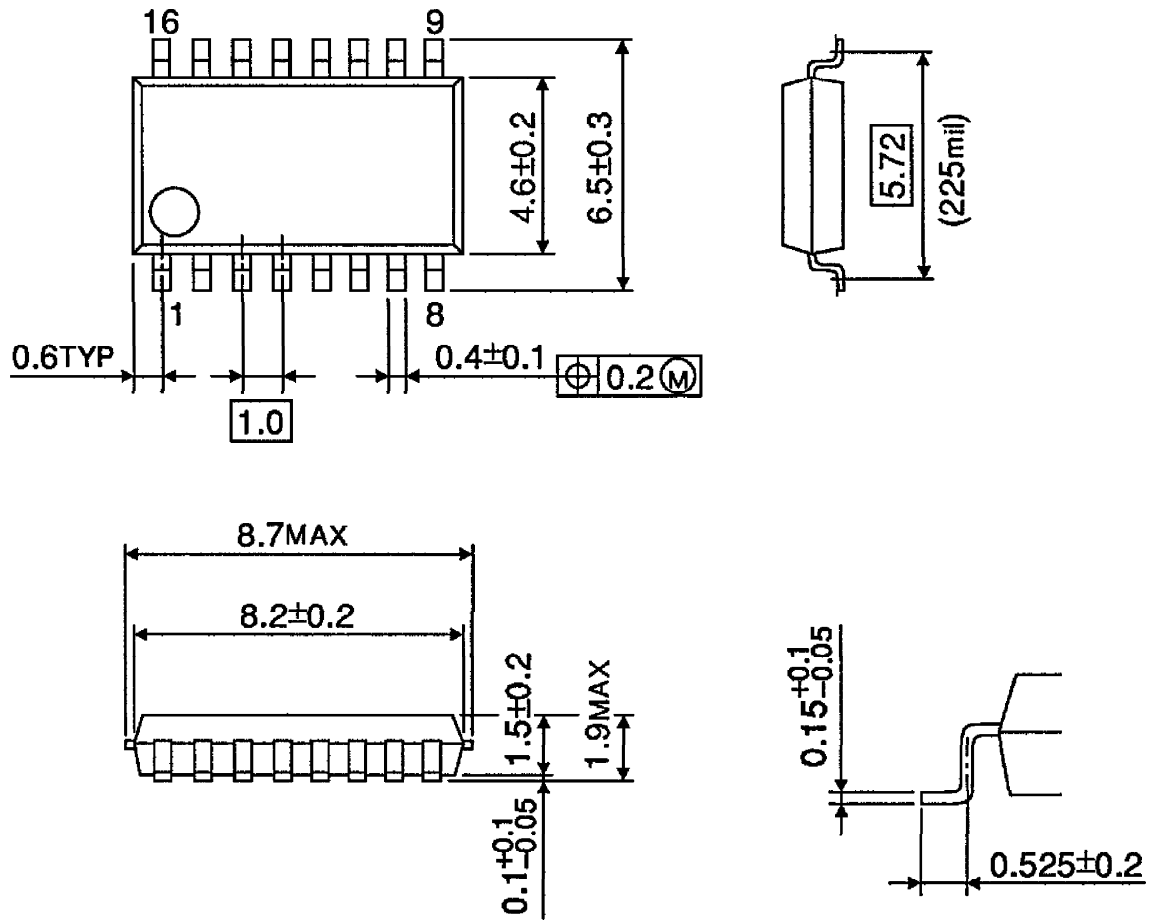
Unit : mm



Weight : 1.11g (Typ.)

OUTLINE DRAWING
SSOP16-P-225-1.00A

Unit : mm



Weight : 0.14g (Typ.)