

Ku Band Power Amplifier TGA1045-EPU

Key Features and Performance

- HFET Technology
- 12.5 -15.5 GHz Frequency Range
- > 3W Nominal Pout
- 24 dB Nominal Gain
- 9V @ 1.2A Bias

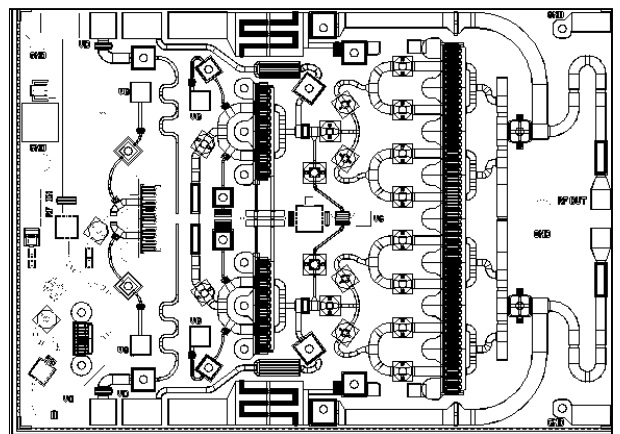
Primary Applications

- Ku band Satellite Ground Terminal
- VSAT
- Point-to-Point Radio

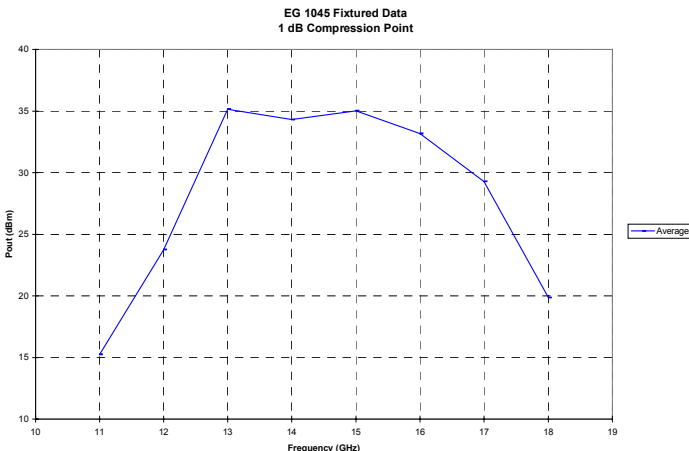
Release Status

- Engineering Prototype Unit (EPU) samples available August 1998

Parameter	Measured (In Fixture)	Units
FREQUENCY RANGE	13.0 - 15.5	GHz
LINEAR GAIN AT 25°C	24.0	dB
GAIN FLATNESS	< 2.0	dB pp
P1dB AT 25°C	~34.5	dBm
INPUT RETURN LOSS	> 10	dB
OUTPUT RETURN LOSS	> 8	dB
DC VOLTAGE	+9	Volts
CURRENT	1.2 Small Signal	A
DC POWER	10.8	W

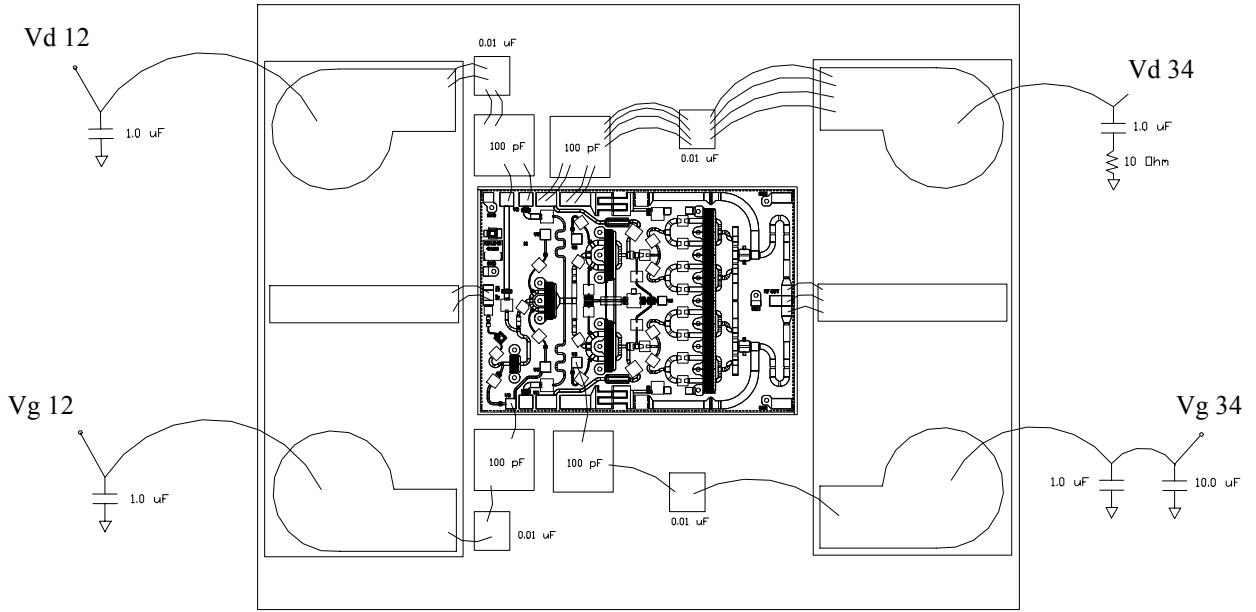


Chip Dimensions 4.69 mm x 3.35 mm



Preliminary Pout Data

Note: Devices designated as EPU are typically early in their characterization process prior to finalizing all electrical and process specifications. Specifications are subject to change without notice.



Recommended Assembly Diagram

Note: Devices designated as EPU are typically early in their characterization process prior to finalizing all electrical and process specifications. Specifications are subject to change without notice.

