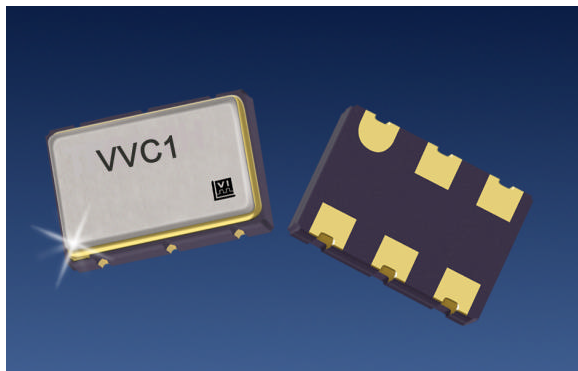



## VVC1/VVC2

### Voltage Controlled Crystal Oscillator



The VVC1 Voltage Controlled Crystal Oscillator

#### Features

- VCXO with a CMOS output
- Small 5.0 X 7.0 X 1.8 mm package
- Output frequencies to 66 MHz
- 5.0 or 3.3 V operation
- Low Jitter < 6 pS rms,  $f_o > 12\text{MHz}$
- Tri-State Output for test and board debug
- 0/70 or -40/85 °C operating temperature
- Hermetically sealed ceramic SMD package
- Product is compliant to RoHS directive  and fully compatible with lead free assembly

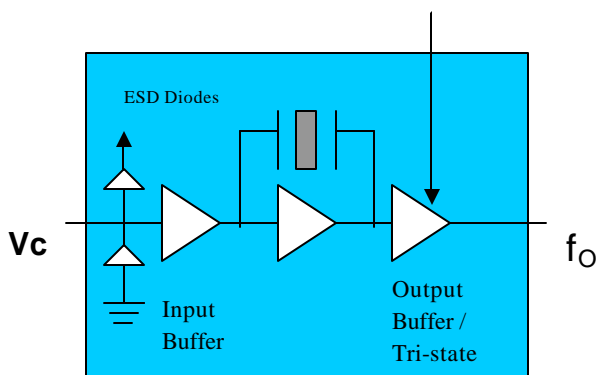
#### Applications

- SONET/SDH/DWDM
- Ethernet, Gigabit Ethernet
- xDSL/PCMCIA cards
- Digital Video
- Broadband Access

#### Description

Vectron's VVC1 Voltage Controlled Crystal Oscillator (VCXO) is a quartz stabilized square wave generator with a CMOS output and is tested at CMOS and TTL (5.0 volt operation) logic levels.

The VVC1 uses fundamental crystals resulting in low jitter performance and a monolithic IC which improves reliability and reduces cost.



# VVC1 Voltage Controlled Crystal Oscillator

## Performance Characteristics

Table 1. Electrical Performance						
Parameter	Symbol	Min	Typical	Maximum	Units	
Frequency	$f_o$	1.544		65.536	MHz	
Supply Voltage <sup>1</sup>	$V_{DD}$	(+5.0 V)	4.750	5.0	5.250	V
		(+3.3 V)	3.135	3.3	3.465	
Supply Current	$I_{DD}$	(+5.0 V)			55	mA
		(+3.3 V)			40	
Output Logic Levels						
Output Logic High <sup>2</sup>	$V_{OH}$	0.9* $V_{DD}$				V
Output Logic Low <sup>2</sup>	$V_{OL}$				0.1 $V_{DD}$	V
Transition Times						
Rise Time <sup>2</sup>	$t_R$			5		ns
Fall Time <sup>2</sup>	$t_F$			5		ns
Symmetry or Duty Cycle <sup>3</sup>	SYM	45	50	55		%
Operating temperature (ordering option)		0/70 or -40/85				°C
Total Pull Range (ordering option)		±50, ±100 or ±150				ppm
Or Absolute Pull Range		±50, ±80 or ±100				
Test Conditions for APR (+5V option)	$V_C$	0.5		4.5	V	
Test Conditions for APR (+3.3V option)	$V_C$	0.3		3.0	V	
Gain Transfer (See Figure 3)		Positive				ppm/V
Control Voltage Leakage Current	$I_{VCXO}$			±1	uA	
Control Voltage Bandwidth (-3dB)	BW	10			kHz	
Package Size		5.0 x 7.0 x 1.8				mm

1. A 0.01uF and a 0.1uF capacitor should be located as close to the supply as possible (to ground) is recommended.
2. Figure 1 defines these parameters. Figure 2 illustrates the equivalent five gate TTL load and operating conditions under which these parameters are tested and specified.
3. Symmetry is defined as (ON TIME/PERIOD with  $V_S=1.4$  V for TTL and  $V_S=2.5$  V for CMOS, 5 volt operation, and  $V_S=1.65$  V for 3.3 Volt operation.

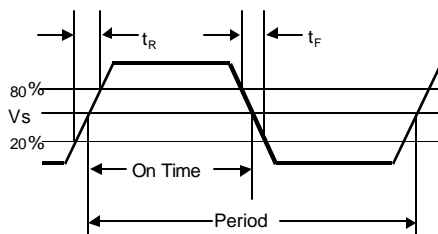


Figure 1. Output Waveform

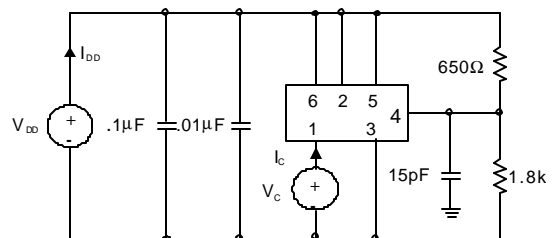
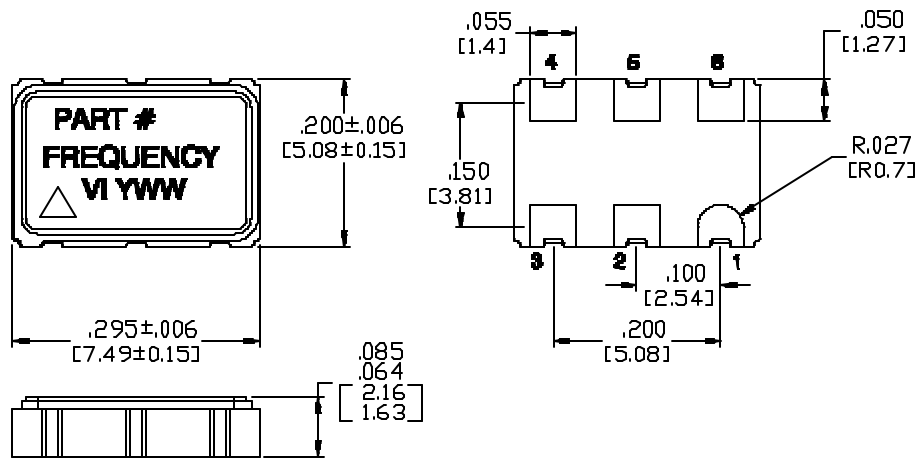


Figure 2. Typical Output Test Conditions (25±5°C)

# VVC1 Voltage Controlled Crystal Oscillator

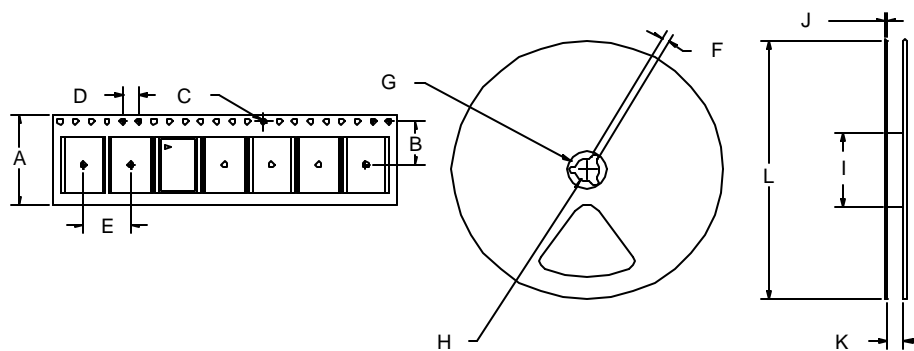
## Outline Diagram, Pad Layout and Pin Out



Inch/[mm]

Pin #	Symbol	Function
1	$V_C$	Control Voltage
2	NC or Tri-state	No Connect or Tri-state
3	GND	Ground
4	$f_o$	Output Frequency
5	Tri-state or NC	Logic low disables output Logic high or no connection enables output waveform
6	$V_{DD}$	Supply Voltage

## Tape and Reel



Tape and Reel Dimensions (mm)

Tape Dimensions					Reel Dimensions							# Per Reel	
Product	A	B	C	D	E	F	G	H	I	J	K		L
VVC1	12	5.5	1.5	4	8	1.78	20.6	13	55	6	12.4	178	500

# VVC1 Voltage Controlled Crystal Oscillator

## Absolute Maximum Ratings

Stresses in excess of the absolute maximum ratings can permanently damage the device. Functional operation is not implied at these or any other conditions in excess of conditions represented in the operational sections of this data sheet. Exposure to absolute maximum ratings for extended periods may adversely affect device reliability.

Table 2. Absolute Maximum Ratings			
Parameter	Symbol	Ratings	Unit
Power Supply	$V_{DD}$	6	Vdc
Storage Temperature	Tstorage	-55/125	°C
Voltage Control Range	$V_C$	Gnd to $V_{DD}$	V

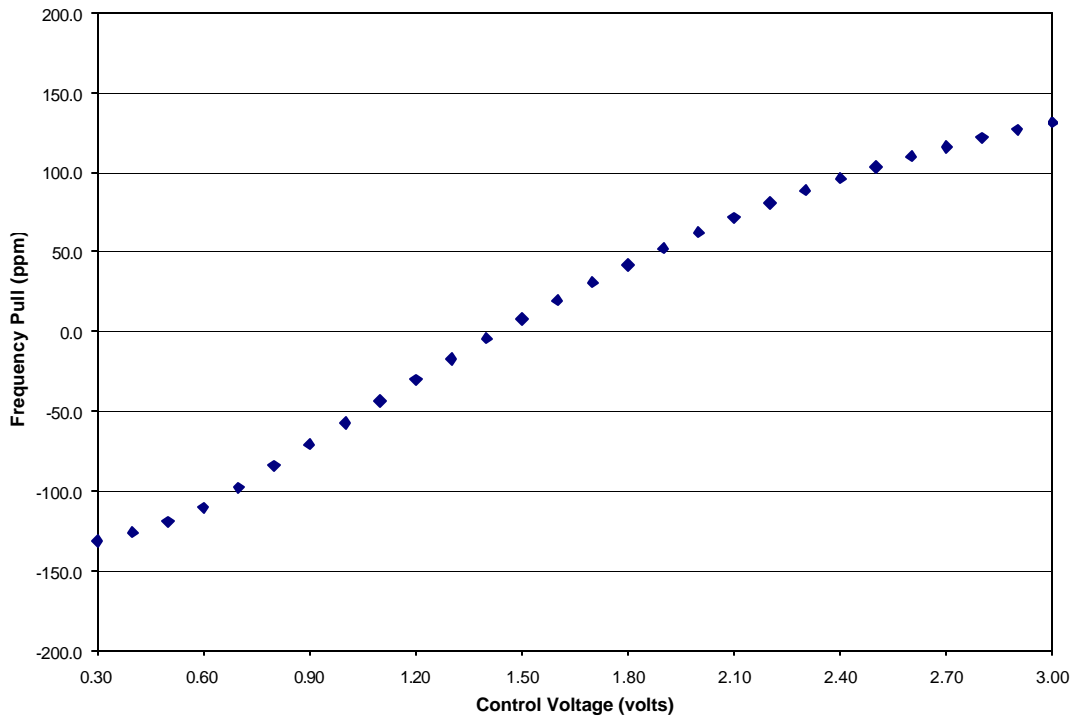


Figure 3. Typical Frequency Pull versus Control Voltage, 35.328MHz Output, 3.3 Volt Supply

# VVC1 Voltage Controlled Crystal Oscillator

## Reliability

The VVC1 is capable of meeting the following qualification tests.

Parameter	Conditions
Mechanical Shock	MIL-STD-883 Method 2002
Mechanical Vibration	MIL-STD-883 Method 2007
Solderability	MIL-STD-883 Method 2003
Gross and Fine Leak	MIL-STD-883 Method 1014
Resistance to Solvents	MIL-STD-883 Method 2016

## Handling Precautions

Although ESD protection circuitry has been designed into the the VVC1, proper precautions should be taken when handling and mounting. VI employs a Human Body Model and a Charged-Device Model (CDM) for ESD susceptibility testing and design protection evaluation. ESD thresholds are dependent on the circuit parameters used to define the model. Although no industry wide standard has been adopted for the CDM, a standard HBM of resistance = 1.5kohms and capacitance = 100pF is widely used and therefore can be used for comparison purposes.

Model	Minimum	Conditions
Human Body Model	1500	MIL-STD-883 Method 3115
Charged Device Model	1000	JESD 22-C101

## Suggested IR profile

Devices are built using lead free epoxy and can also be subjected to standard lead free IR reflow conditions.

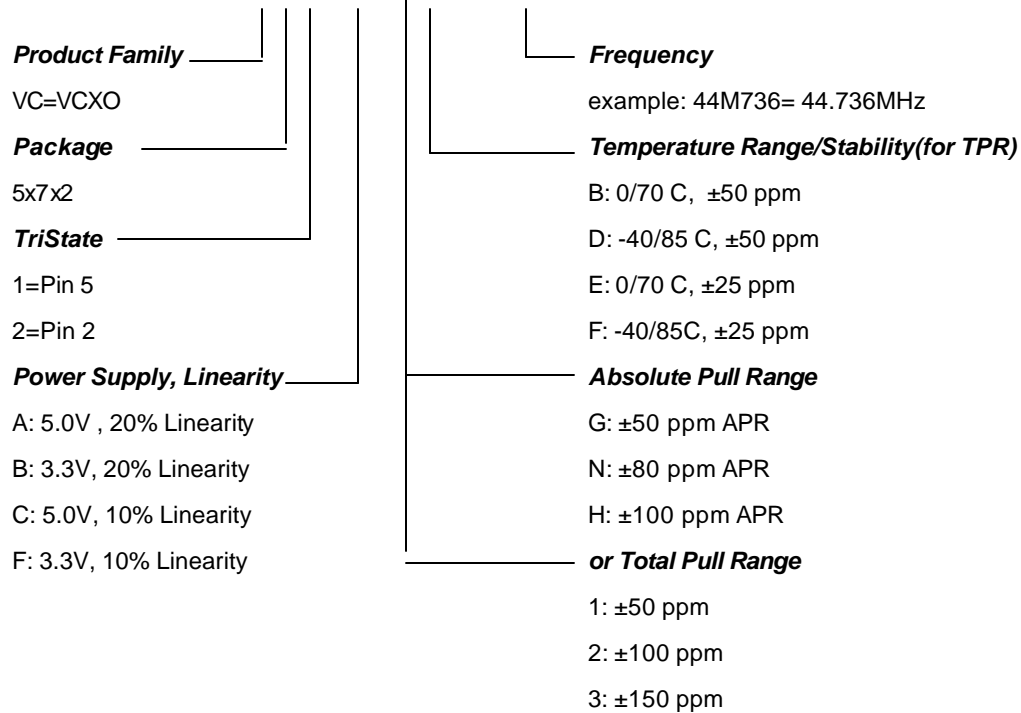
# VVC1 Voltage Controlled Crystal Oscillator

Standard Frequencies (MHz)				
1.544	2.048	4.096	8.192	10.000
12.000	12.288	12.352	13.000	14.318
15.440	16.000	16.384	18.432	19.440
20.000	20.480	24.576	24.704	27.000
30.000	32.000	32.768	34.368	35.328
38.880	40.000	40.960	44.736	51.840
52.000	62.208	65.536		

Other frequencies may be available upon request. Standard frequencies are frequencies which the crystal has been designed and does not imply a stock position.

## Ordering Information

### VVC1-BGE – xxMxxx



**NOTE:** Not all combinations of options are available. Higher frequencies have less pull capability, especially at +3.3 volts supply, and higher pull can result in 20% linearity instead of 10%. Consult factory or your local sales representative with application requirements.

### For Additional Information, Please Contact:



**USA:** Vectron International • 267 Lowell Road, Hudson, NH 03051  
 • Tel: 1-88-VECTRON-1 • Fax: 1-888-FAX-VECTRON  
**EUROPE:** VI Telefilter · Potsdamer Straße 18, 14513 Teltow, Germany  
 Tel: 49 (0) 3328 4784 17 • Fax: 49 (0) 3328 4784 30  
**ASIA:** Vectron Asia Pacific Sales 1F~2F. No.8 Workshop No.308 Fenju Rd., WaiGaoQiao  
 Free Trade Zone, Pudong New Area Shanghai, China 200131  
 •Tel: 8621 50480777 • Fax: 8621 50481881

[www.vectron.com](http://www.vectron.com)

Vectron International reserves the right to make changes to the product(s) and/or information contained herein without notice. No liability is assumed as a result of their use or application. No rights under any patent accompany the sale of any such product(s) or information. VVC1 (June 26 2005)