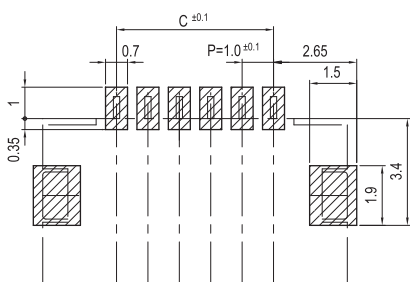
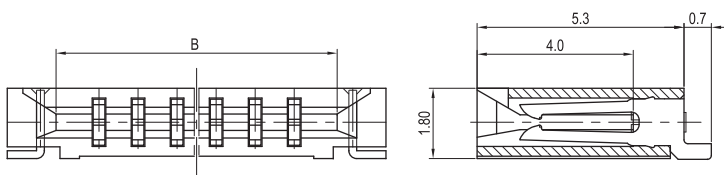
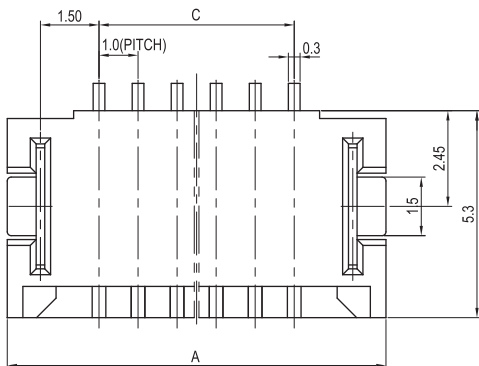
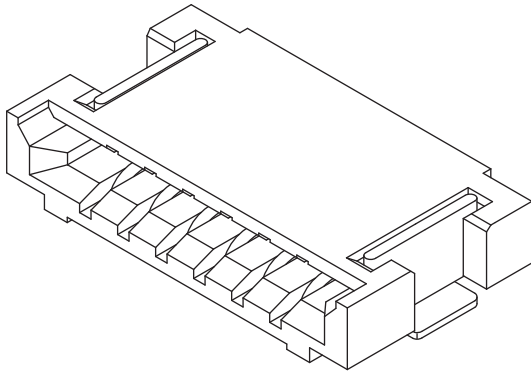


# 1.00mm (0.039") PITCH CONNECTOR

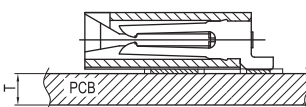


**FPC/FFC Connector Housing**

**10025HR Series**  
**SMT, NON-ZIF (Dual Sided Contact Type)**  
**Straight**



PCB LAYOUT



PCB ASS'Y

## Material

| I/NO | DESCRIPTION | TITLE   | MATERIAL                       |
|------|-------------|---------|--------------------------------|
| 1    | HOUSING     | 10025HR | PPS & PA46, PA6T, UL 94V Grade |
| 2    | TERMINAL    | 10025TR | Phosphor Bronze & Tin plated   |
| 3    | HOOK        | 10025LR | Brass & Tin plated             |

## Available Pin

| PARTS NO.     | A    | B    | C    |
|---------------|------|------|------|
| 10025HR-04A00 | 7.7  | 5.0  | 3.0  |
| 10025HR-05A00 | 8.7  | 6.0  | 4.0  |
| 10025HR-06A00 | 9.7  | 7.0  | 5.0  |
| 10025HR-07A00 | 10.7 | 8.0  | 6.0  |
| 10025HR-08A00 | 11.7 | 9.0  | 7.0  |
| 10025HR-09A00 | 12.7 | 10.0 | 8.0  |
| 10025HR-10A00 | 13.7 | 11.0 | 9.0  |
| 10025HR-11A00 | 14.7 | 12.0 | 10.0 |
| 10025HR-12A00 | 15.7 | 13.0 | 11.0 |
| 10025HR-13A00 | 16.7 | 14.0 | 12.0 |
| 10025HR-14A00 | 17.7 | 15.0 | 13.0 |
| 10025HR-15A00 | 18.7 | 16.0 | 14.0 |
| 10025HR-16A00 | 19.7 | 17.0 | 15.0 |
| 10025HR-17A00 | 20.7 | 18.0 | 16.0 |
| 10025HR-18A00 | 21.7 | 19.0 | 17.0 |
| 10025HR-19A00 | 22.7 | 20.0 | 18.0 |
| 10025HR-20A00 | 23.7 | 21.0 | 19.0 |
| 10025HR-21A00 | 24.7 | 22.0 | 20.0 |
| 10025HR-22A00 | 25.7 | 23.0 | 21.0 |
| 10025HR-23A00 | 26.7 | 24.0 | 22.0 |
| 10025HR-24A00 | 27.7 | 25.0 | 23.0 |
| 10025HR-25A00 | 28.7 | 26.0 | 24.0 |

## Specification

| ITEM                   | SPEC          |
|------------------------|---------------|
| Voltage Rating         | AC/DC 50V     |
| Current Rating         | AC/DC 1A      |
| Operating Temperature  | -25°C ~ +85°C |
| Contact Resistance     | 30mΩ MAX      |
| Withstanding Voltage   | AC500V/1min   |
| Insulation Resistance  | 100MΩ MIN     |
| Applicable Wire        | -             |
| Applicable P.C.B       | 0.8 ~ 1.6mm   |
| Applicable FPC/FFC     | 0.30±0.05mm   |
| Solder Height          | 0.15mm        |
| Crimp Tensile Strength | -             |
| UL FILE NO             | -             |