

ADP 45WA Series

Single Output, 45 Watt, Universal AC-DC Power Supplies



The ADP 45WA Series are light, compact, and efficient power supplies. These supplies are ideal for a wide range of limited space applications from notebook computers to industrial instrumentation. The ADP Series quietly delivers continuous power, while complying with international safety standards. The ADP Series are enclosed in a modern molded plastic case.

Features

- High Efficiency 81% to 83% Nominal
- Ultra Miniature Size, 106mm x 60mm x 25.4mm
- Light Weight, 270g
- Universal Input, 90 to 265 Vac
- Meets FCC & CISPR Level "B" EMI Requirements
- Tight Voltage Regulation
- Over-Current Protected
- Meets Worldwide Safety Standards

3100 Tower Boulevard

5th Floor University Tower



Durham, NC 27707

Part Number	Rated Output Voltage	Rated Output Current	Overall Regulation	Overall Regulation	Ripple Noise	Efficiency
ADP45WA13.5	13.5 V	2.9 A	0~3.3 A	12.5~14.5 V	450 mVpp	81%
ADP45WA15.0	15 V	2.6 A	0~3 A	14~16 V	400 mVpp	82%
ADP45WA16.0	16 V	2.6 A	0~2.9 A	15~17 V	350 mVpp	83%
ADP45WA19.0	19 V	2.4 A	0~2.4 A	18~20 V	350 mVpp	83%

(919) 402-1320 Fax: (919) 402-8540

ADP 45WA Series

SPECIFICATIONS

INPUT

Input Voltage	Universal, 90 to 265 V
Input Frequency	47 to 63 Hz
Input Current	1.0 A or less
Inrush Current	50 A or less at cold start
Leakage Current	100 μ A max (240 V, 50 Hz)
Efficiency	81% to 83% nominal, full load
AC Turn-on Time	1.3 sec. at 90 V

OUTPUT

Output Power	45 W
Over-Current Protection	Yes, Constant current
Over-Voltage Protection	Yes, Shut down
Thermal Protection	Yes, Shut down
Reset Time after Shutdown	32 sec. at 240 V

ENVIRONMENTAL

Operating Temperature	0~+40°C
Storage Temperature	-20~+80°C
Cooling	Free air convection
Storage Humidity	10~90%
Operation Humidity	20~80%

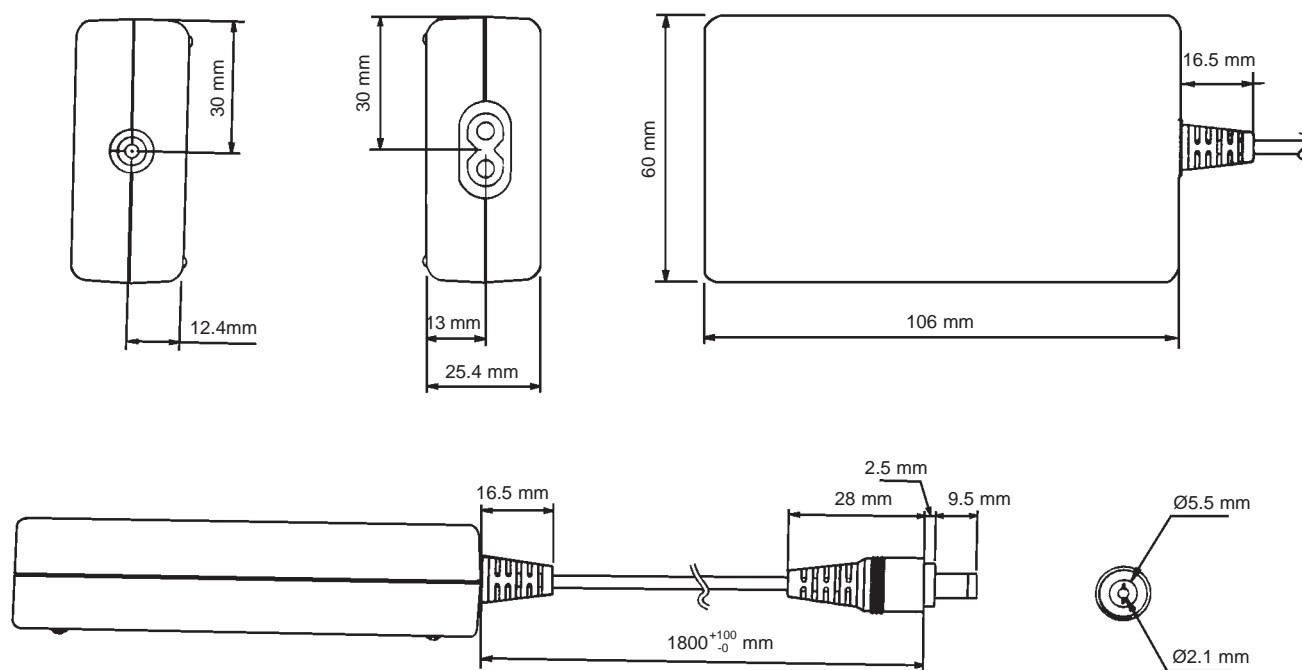
Specifications subject to change without notice.

VIBRATION

Frequency	10~100 Hz
Amplitude	25 mm (max)
Acceleration	0.5 G
Sweep Time	60 sec.
Direction	X,Y,Z
Vibration Time	10 min.

SHOCK

Storage	Passes lifting the unit and dropping it from 1 meter high to an oak board. 3 times, with no damage
Operation	Shock acceleration: 2.0 G, Sine wave: 10 ms Direction of force: X,Y,Z Apply 10 times in 1 sec. intervals
EMI Regulations	VCCI Class-II FCC Class-B (115 V) CISPR22 Class-B (230 V)
Safety Standards	Dentori UL 1950, UL 1310 C-UL No. 1950 TUV EN60950
Hi-Pot Test	P-S 3 kv 1 min. (10 mA or less)
Insulation Resistance	P-S DC 500 V, 50 M Ω or more



SanKen