

Power Dividers 2-Way

Applications

- Phased Arrays
- Antenna Feed Networks
- Image Reject Mixers
- Test Systems
- LO Power Dividers



Features

- Military Grade
- 6.0 to 18.0 GHz
- In-Phase
- Connectors Per MIL-C-39012
- Rugged Aluminum Housing
- Low VSWR

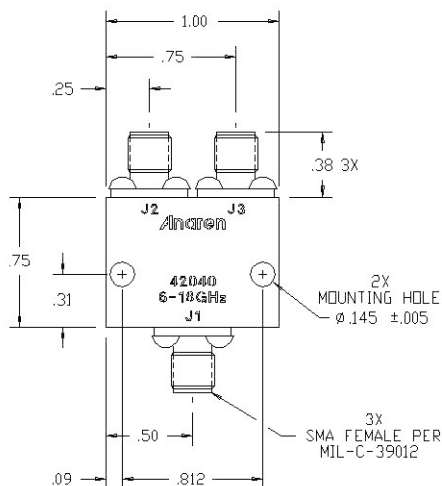
Electrical Specifications

	Frequency GHz	Isolation dB Min	Insert. Loss dB Max	VSWR Max In/Out : 1
Split Specs	6.0 - 16.0	17	0.80	1.58/1.58
	16.0 - 18.0	17	1.20	2.00/2.00
	Amp. Bal. dB Max	Phase Bal. Degrees Max	Connector	Power Ave. cw Watts
Split Specs	0.50	10	SMA	10
	0.50	10	SMA	10

Notes: *Input power with load VSWR of 1.20:1. Impedance: 50 ohms nominal. Meets MIL-E-5400 Class III requirements. Additional screening available for military and space applications.

Electrical and Mechanical Specifications subject to change without notice.

Outline Drawing



- NOTES:
1. DIMENSIONS ARE IN INCHES OVER MILLIMETERS
 2. MARKING SHALL BE IN ACCORDANCE WITH MIL-STD-130
 3. FINISH: EPOXY PRIMER PER MIL-P-23377
BLUE EPOXY PAINT PER MIL-C-22750
COLOR CHIP 35180 PER FED-STD-595