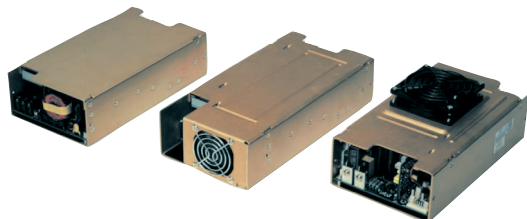


350 Watts LPS350 Series

Total Power: 350 Watts
Input Voltage: 85-264 VAC
120-300 VDC
of Outputs: Single



Special Features

- Active power factor correction
- IEC EN6100-3-2 compliance
- Remote sense
- Power fail and remote inhibit
- Single wire current sharing
- Built-in EMI filter
- Low output ripple
- Supervisory output 5 V and 12 V
- Overvoltage protection
- Overload protection
- Thermal overload protection
- DC power good
- Cover -C
- 130 KHz switching frequency
- Optional with fan cover -CF
- Optional end-mounted fan - CEF

Environmental

Operating temperature: 0° to 50°C ambient
derate each output at 2.5% per degree from 50° to 70°C

Electromagnetic susceptibility: Designed to meet IEC 801, -2, -3, -4, -5, -6, Level 3

Humidity: Operating; non-condensing
5% to 95%

Vibration: Three orthogonal axes, sweep at 1 oct/min, 5 min. dwell at four major resonances
0.7 G peak 5 Hz to 500 Hz, operational

Storage temperature: -40° to 85°C

Temperature coefficient: $\pm 0.04\%$ per °C

MTBF demonstrated: >550,000 hours at full load
and 25°C ambient conditions

Electrical Specs

Input

Input range	85-264 VAC; 120-300 VDC
Frequency	47-440 Hz
Inrush current	38 A max., cold start @ 25°C
Efficiency	75% typical at full load
EMI filter	FCC Class B conducted and radiated CISPR 22 Class B conducted and radiated EN55022 Class B conducted and radiated VDE 0878 PT3 Class B conducted and radiated.
Power factor	0.99 typical
Safety ground leakage current	<0.5 mA @ 50/60 Hz, 264 VAC input

Output

Maximum power	With cover: 350 W with 30 CFM forced air, (-C) (-CF) (-CEF)
Adjustment range	2:1 wide ratio
Supervisory outputs mA x2	5 V @ 500 mA regulated, 12 V @ 150
Hold-up time	20 ms @ 350 W load, 115 VAC nominal line at factory voltage setting
Overload protection	Short circuit protection on all outputs. Case overload protected @ 110-145% above peak rating
Overvoltage protection	5 V output: 5.7-6.7 VDC. Other models 10% to 25% above nominal output

Logic Control

Power failure	TTL logic signal goes high 50-150 msec after 5 V output. It goes low at least 4 msec before loss of regulation
Remote on/off	Requires an external contact (N.O or N.C) to inhibit outputs
DC-OK	TTL logic goes high 50-150 msec after the output. It goes low when there is loss of regulation.
Remote sense	Compensates for 0.5 V lead drop min. Will operate without remote sense connected. Reverse connection protected.

Safety

VDE	0805/EN60950 (IEC950)	21310-3336-0001
ULUL1950	E186249	
CSA	CSA 22.2-234 Level 5	LR109492C
NEMKO	EN 60950/EMKO-TUE (74-sec) 203	P98102115
BABT	EN60950/BS7002	608857, 608858, 609097
CB	Certificate and report	5734, 6280, 6281
CE	Mark (LVD)	

rev 07.11.05



AMERICAS

5810 Van Allen Way
Carlsbad, CA 92008
Telephone: 760-930-4600
Facsimile: 760-930-0698

EUROPE

Astec House, Waterfront Business Park
Merry Hill, Dudley
West Midlands, DY5 1LX, UK
Telephone: 44 (1384) 842-211
Facsimile: 44 (1384) 843-355

ASIA

Units 2111-2116, Level 21
Tower 1, Metroplaza
223, Hing Fong Road
Kwai Fong, New Territories
Hong Kong
Telephone: 852-2437-9662
Facsimile: 852-2402-4426



Ordering Information

Model Number	Output Voltage	Minimum Load	Maximum Load with 30 CFM Forced Air	Peak Load ¹	Regulation ²	Ripple P/P (PARD) ³
LPS352-C	5 V (3-6 V)	0 A	70 A	80 A	±2%	50 mV
LPS353-C	12 V (6-12 V)	0 A	29.2 A	33 A	±2%	120 mV
LPS354-C	15 V (12-24 V)	0 A	23.3 A	26 A	±2%	150 mV
LPS355-C	24 V (24-48 V)	0 A	14.6 A	16 A	±2%	240 mV

1. Peak current lasting <30 seconds with a maximum 10% duty cycle.
2. At 25°C including initial tolerance, line voltage, load currents and output voltages adjusted to factory settings.
3. Peak-to-peak with 20 MHz bandwidth and 10 μ F in parallel with a 0.1 μ F capacitor at rated line voltage and load ranges.
4. If optional CF or CEF fans are not used, 30CFM forced air cooling needs to be provided and is required through the length of the power supply. Not convection rated.
5. Output voltage adjustment requires a 1A load.
6. Remote inhibit resets OVP latch.

Note: -CF suffix added to the model number indicates cover with top fan;
-CEF suffix added to model number indicates end-mounted fan chassis.

Pin Assignments

Connector

SK1	PIN 1	Neutral
	PIN 2	Line
	PIN 3	Ground
SK3	PIN 1	N/C
	PIN 2	N/C
	PIN 3	+ Sense
	PIN 4	- Sense
	PIN 5	POK
	PIN 6	C.Share
	PIN 7	DC-OK
	PIN 8	Inhibit (N.O.)
	PIN 9	Inhibit (N.C.)
	PIN 10	COM
SK4	PIN 1	+ 5V aux (5V @ 100mA)
	PIN 2	- Common
SK5	PIN 1	+ Fan 1 (12 V @ 150mA)
	PIN 2	- Common
SK6	PIN 1	+ Fan 2 (12V @ 150mA)
	PIN 2	- Common

Mating Connectors

SK3	Molex 22-01-1104
	PINS: 08-70-0057
SK4	Molex 22-01-3027
	PINS: 08-50-0114
SK5	Molex 22-01-3027
	PINS: 08-50-0114
SK6	Molex 22-01-3027
	PINS: 08-50-0114

Astec Connector Kit #70-841-011

Notes:

1. Specifications subject to change without notice.
2. All dimensions in inches (mm), tolerance is ±.02".
3. Specifications are at factory settings
4. To enable normally closed Remote Inhibit, cut jumper J1.
5. Mounting maximum insertion depth is 0.12".
6. Warranty: 1 year
7. Weight: 3.6 lb. / 1.64 kg.

