

# CUT-OUT COVERS™

- 20 standard sizes and styles accommodate most industry standard connectors
- Fast, easy assembly with push-on stainless steel clips furnished with each cover
- Provides an attractive finished look to panels
- For use with CPCI, VME, Eurocard and other panels



### Mounting Information:

Attaches with provided stainless steel, push-on clips

### Material Specifications:

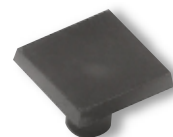
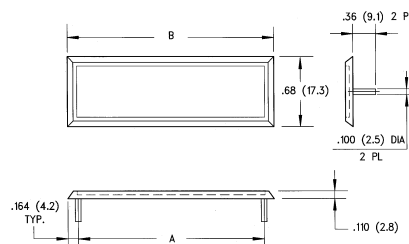
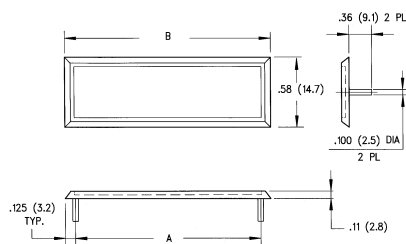
UL Rated 94V-0, Black, ABS

Oxygen Index: +28%

UL File # E121562

### Application Notes:

Cut-Out covers can be hot stamped and/or labeled for easy identification

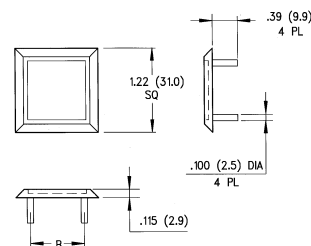
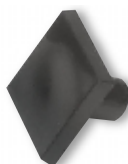
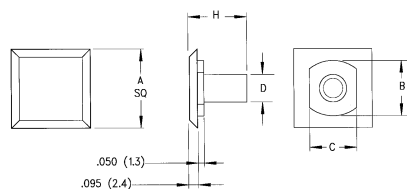


## Cut-Out Covers Series 10

Part No.	A	B	Clip No.	Price Code
10-9	.984 (25.0)	1.23 (31.2)	SSC-1	BB
10-15	1.312 (33.3)	1.56 (39.6)	SSC-1	DD
10-25	1.852 (47.0)	2.10 (53.3)	SSC-1	FF
10-37	2.500 (63.5)	2.75 (69.9)	SSC-1	HH
10-50	2.406 (61.1)	2.66 (67.6)	SSC-1	JJ

## Cut-Out Covers Series 12

Part No.	A	B	Clip No.	Price Code
12-14R	1.417 (36.0)	1.745 (44.3)	SSC-1	FF
12-24R	1.842 (46.8)	2.170 (55.1)	SSC-1	GG
12-36R	2.352 (59.7)	2.680 (68.1)	SSC-1	JJ
12-50R	2.947 (74.9)	3.275 (83.2)	SSC-1	KK
12-64R	3.542 (90.0)	3.875 (98.4)	SSC-1	MM



## Cut-Out Covers Series 14

Part No.	A	B	C	D	H	Type	Clip No.	Price Code
14-11		.187 (4.7)	.155 (3.9)			SMC	SSC-1	AA
14-12	.375 (9.5)	.245 (6.2)	.215 (5.5)	.125 (3.2)		MINI COAX.	SSC-1	AA
14-13	Sq.	.276 (7.0)	.235 (6.0)			SMC. M. COAX.	SSC-1	AA
14-21		.360 (9.1)	.310 (7.9)		.47 (11.9)	TNC, BNC	BPC-125	CC
14-22	.625 (15.9)	.430 (10.9)	.375 (9.5)			TNC, COAX	BPC-125	CC
14-23	Sq.	.495 (12.6)	.430 (10.9)	.250 (6.4)		BNC, SHV	BPC-125	CC
14-31	.812 (20.6)	.625 (15.9)	.520 (13.2)		.58 (14.7)	N SERIES	BPC-125L	EE
14-32	Sq.	.750 (19.1)	.630 (16.0)			TWIN VIDEO	BPC-125L	EE

## Cut-Out Covers Series 16

Part No.	B	Shell Size	Clip No.	Price Code
16-41	.906 (23.0)	14, 15	SSC-1	LL
16-42	.969 (24.6)	16, 17	SSC-1	LL