

LED MOUNTS/SPACERS

Extruded, Self-Retaining LED Mounts

- Self Retaining feature for auto insertion & pre-assembly
- Universal fit for all through-hole LEDs
- Available in standard and metric sizes
- Operating temperature range -40°C~ +85°C

Price Code Chart

"L" Dimensions	ERB	ERC	ERM 1
.030 - .075 (1.0 - 1.9)	U	U	U
.080 - .150 (2.0 - 3.8)	V	V	V
.155 - .230 (4.0 - 5.8)	W	W	W
.235 - .310 (6.0 - 7.9)	X	X	X
.315 - .380 (8.0 - 9.7)	Y	Y	Y
.385 - .495 (9.8 - 12.6)	Z	Z	Z
.500 - .750 (12.7 - 19.1)	ZZZ	ZZZ	ZZZ
.755 - 1.250 (19.2 - 31.8)	ZZZZ	ZZZZ	ZZZZ

Standard Tolerances:

Profile: $\pm .005$ (.13)

"L" Dim: .030 - .500 (1.0 - 12.7) is $\pm .005$ (.13)

"L" Dim: .505 - .750 (12.8 - 19.1) is $\pm .008$ (.20)

"L" Dim: .750 - 1.250 (19.2 - 21.8) is $\pm .015$ (.38)

UL Rated 94V-0 PVC Alloy

Oxygen Index: +28%

UL File #E179500

Examples:

ERB-400 is price code Z

ERC-050 is price code U

ERM-150 is price code V

Ordering Information:

ERB XXX

Length Expressed in Thousandths
(in .005" increments)
(Must be even multiples of .005")
or whole millimeters (example:
2mm)

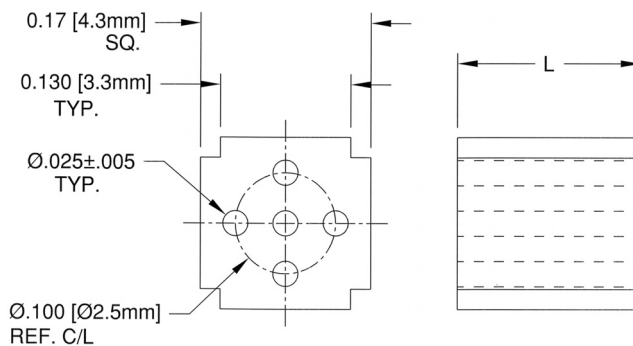
0.040 = 040 0.750 = 750

0.100 = 100 1.250 = 1.250

Series: ERC
ERB
ERM-1

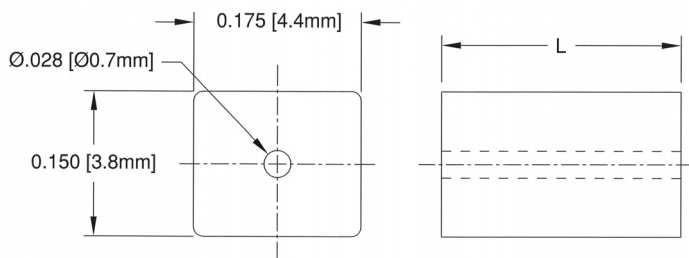
ERB Series

Universal 5 Hole LED Mount
2 and 3 Lead LEDs
Color: Black



ERC Series

Universal Single Hole LED
Mount Tri-Lead LEDs
Color: Black



ERM-1 Series

Rectangular LED Mount
2 and 3 Lead LEDs
Color: Black

