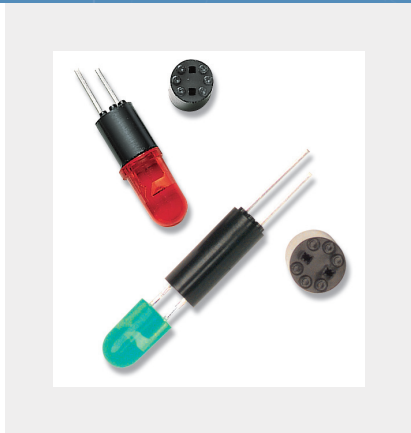


LED MOUNTS/SPACERS

Molded Self-Retaining LED Mounts

- One Universal Style for Both T-1 (3mm) and T-1³/₄ (5mm) LEDs
- Internal Tapered Divider Prevents Leads from Shorting
- 54 Standard Stock Lengths from .120" - .900" (3.1 - 22.9)



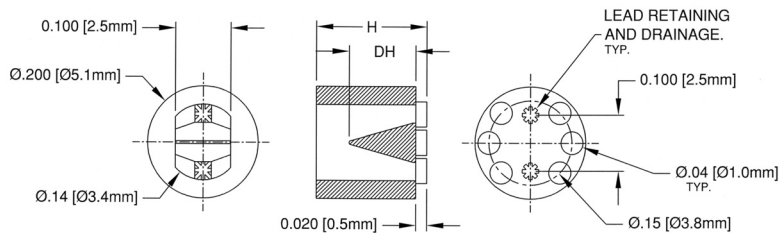
Bivar's molded, self-retaining LED mounts allow easier assembly and handling while internal dividers prevent leads from shorting in the field. The LTM Series is also ideal for severe duty environments where temperature extremes are a concern.

Material Specifications:

UL Rated 94V-0 Dow Questra Black Crystalline Polymer

Oxygen Index: +28%

UL File #E161817



Note: A thin film of flash is allowed for improved retention

LTM Series

Crystalline Polymer UL Rated 94V-0
Color: Black

Part No.	H	Price Code
LTM-120	.120 (3.1)	A
LTM-130	.130 (3.3)	A
LTM-140	.140 (3.6)	A
LTM-150	.150 (3.8)	A
LTM-160	.160 (4.1)	A
LTM-170	.170 (4.3)	A
LTM-180	.180 (4.6)	A
LTM-190	.190 (4.8)	A
LTM-200	.200 (5.1)	A
LTM-210	.210 (5.3)	A
LTM-220	.220 (5.6)	A
LTM-230	.230 (5.8)	A
LTM-240	.240 (6.1)	A
LTM-250	.250 (6.4)	B
LTM-260	.260 (6.6)	B
LTM-270	.270 (6.9)	B
LTM-280	.280 (7.1)	B
LTM-290	.290 (7.4)	B
LTM-300	.300 (7.6)	B
LTM-310	.310 (7.9)	B
LTM-320	.320 (8.1)	B
LTM-330	.330 (8.4)	B
LTM-340	.340 (8.6)	B
LTM-350	.350 (8.9)	B
LTM-360	.360 (9.1)	B
LTM-370	.370 (9.4)	B
LTM-380	.380 (9.7)	F

Part No.	H	Price Code
LTM-390	.390 (9.9)	F
LTM-400	.400 (10.2)	F
LTM-410	.410 (10.4)	F
LTM-420	.420 (10.7)	F
LTM-430	.430 (10.9)	F
LTM-440	.440 (11.2)	F
LTM-450	.450 (11.4)	F
LTM-460	.460 (11.7)	F
LTM-480	.480 (12.2)	F
LTM-490	.490 (12.5)	F
LTM-500	.500 (12.7)	G
LTM-520	.520 (13.2)	G
LTM-550	.550 (14.0)	G
LTM-570	.570 (14.5)	G
LTM-600	.600 (15.2)	G
LTM-620	.620 (15.8)	G
LTM-650	.650 (16.5)	H
LTM-670	.670 (17.0)	H
LTM-700	.700 (17.8)	H
LTM-720	.720 (18.3)	H
LTM-750	.750 (19.1)	I
LTM-770	.770 (19.6)	I
LTM-800	.800 (20.3)	I
LTM-820	.820 (20.8)	I
LTM-850	.850 (21.6)	I
LTM-870	.870 (22.1)	I
LTM-900	.900 (22.9)	I