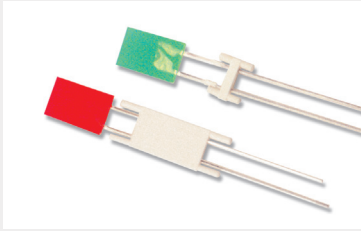


# LED MOUNTS/SPACERS

## Rectangular LED Spacers



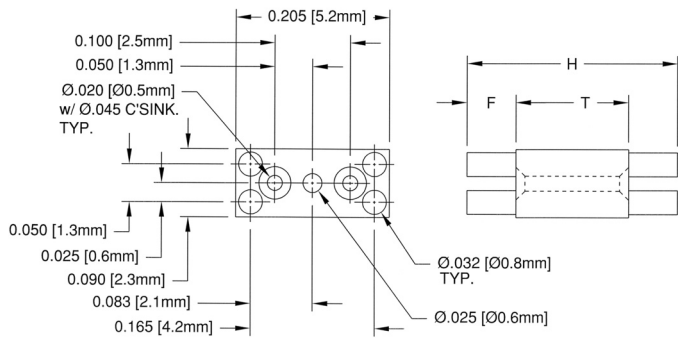
- Molded from White Nylon per ASTM D-4066
- RL1 and RL2 Suitable for Automatic Insertion
- Feet Facilitate Cleaning and Inspection
- Made from 94V-0 Rated Nylon

### Material Specifications:

UL Rated 94V-2 White Nylon per ASTM D4066 PA111

**Oxygen Index:** +28%

UL File #E78964



### RL 1 Series

Self-retaining

Color: White  
Price Code: B

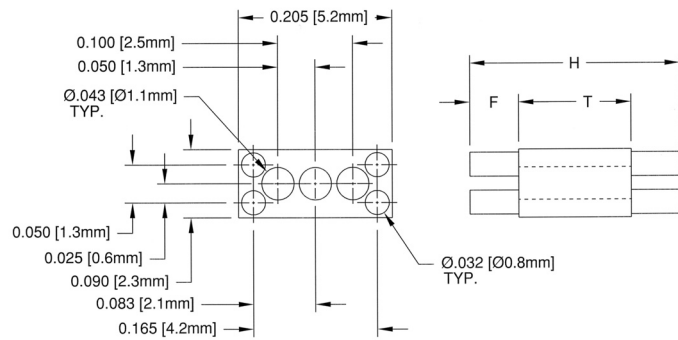
Part No.	H	T	F
RL1-060	.060 (1.5)	.040 (1.0)	.010 (.25)
RL1-070	.070 (1.8)	.040 (1.0)	.015 (.38)
RL1-080	.080 (2.0)	.040 (1.0)	.020 (.51)
RL1-090	.090 (2.3)	.040 (1.0)	.025 (.64)
RL1-100	.100 (2.5)	.040 (1.0)	.030 (.76)
RL1-110	.110 (2.8)	.040 (1.0)	.035 (.89)
RL1-120	.120 (3.0)	.040 (1.0)	.040 (1.0)
RL1-130	.130 (3.3)	.040 (1.0)	.045 (1.1)
RL1-140	.140 (3.6)	.040 (1.0)	.050 (1.3)
RL1-150	.150 (3.8)	.040 (1.0)	.055 (1.4)
RL1-160	.160 (4.1)	.040 (1.0)	.060 (1.5)
RL1-170	.170 (4.3)	.040 (1.0)	.065 (1.7)
RL1-180	.180 (4.6)	.040 (1.0)	.070 (1.8)
RL1-190	.190 (4.8)	.040 (1.0)	.075 (1.9)
RL1-200	.200 (5.1)	.040 (1.0)	.080 (2.0)
RL1-210	.210 (5.3)	.040 (1.0)	.085 (2.2)

### RL 2 Series

Self-retaining

Color: White  
Price Code: B

Part No.	H	T	F
RL2-200	.200 (5.1)	.150 (3.8)	.025 (.64)
RL2-210	.210 (5.3)	.150 (3.8)	.030 (.76)
RL2-220	.220 (5.6)	.150 (3.8)	.035 (.89)
RL2-230	.230 (5.8)	.150 (3.8)	.040 (1.0)
RL2-240	.240 (6.1)	.150 (3.8)	.045 (1.1)
RL2-250	.250 (6.4)	.150 (3.8)	.050 (1.3)
RL2-260	.260 (6.6)	.150 (3.8)	.055 (1.4)
RL2-270	.270 (6.9)	.150 (3.8)	.060 (1.5)
RL2-280	.280 (7.1)	.150 (3.8)	.065 (1.7)
RL2-290	.290 (7.4)	.150 (3.8)	.070 (1.8)
RL2-300	.300 (7.6)	.150 (3.8)	.075 (1.9)
RL2-310	.310 (7.9)	.150 (3.8)	.080 (2.0)
RL2-320	.320 (8.1)	.150 (3.8)	.085 (2.2)
RL2-330	.330 (8.4)	.150 (3.8)	.090 (2.3)
RL2-340	.340 (8.6)	.150 (3.8)	.095 (2.4)
RL2-350	.350 (8.9)	.150 (3.8)	.100 (2.5)



### RL 3 Series

Color: White  
Price Code: G

Part No.	H	T	F
RL3-360	.360 (9.1)	.340 (8.6)	.010 (.25)
RL3-380	.380 (9.7)	.340 (8.6)	.020 (.51)
RL3-400	.400 (10.2)	.340 (8.6)	.030 (.76)
RL3-420	.420 (10.7)	.340 (8.6)	.040 (1.0)
RL3-440	.440 (11.2)	.340 (8.6)	.050 (1.3)
RL3-460	.460 (11.7)	.340 (8.6)	.060 (1.5)
RL3-480	.480 (12.2)	.340 (8.6)	.070 (1.8)
RL3-500	.500 (12.7)	.340 (8.6)	.080 (2.0)
RL3-520	.520 (13.2)	.340 (8.6)	.090 (2.3)
RL3-540	.540 (13.7)	.340 (8.6)	.100 (2.5)

### RL 4 Series

Color: White  
Price Code: H

Part No.	H	T	F
RL4-560	.560 (14.2)	.540 (13.7)	.010 (.25)
RL4-580	.580 (14.7)	.540 (13.7)	.020 (.51)
RL4-600	.600 (15.2)	.540 (13.7)	.030 (.76)
RL4-620	.620 (15.7)	.540 (13.7)	.040 (1.0)
RL4-640	.640 (16.3)	.540 (13.7)	.050 (1.3)
RL4-660	.660 (16.8)	.540 (13.7)	.060 (1.5)
RL4-680	.680 (17.3)	.540 (13.7)	.070 (1.8)
RL4-700	.700 (17.8)	.540 (13.7)	.080 (2.0)
RL4-720	.720 (18.3)	.540 (13.7)	.090 (2.3)
RL4-740	.740 (18.8)	.540 (13.7)	.100 (2.5)
RL4-760	.760 (19.3)	.540 (13.7)	.110 (2.8)