

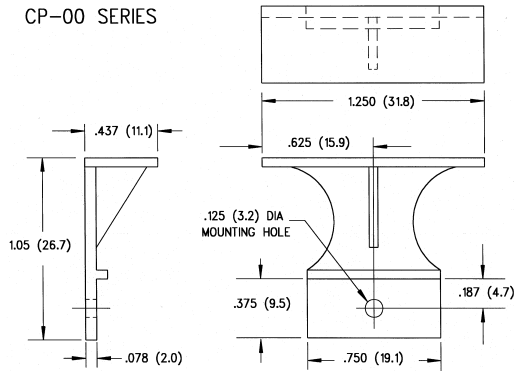
Bivar

CARD-O-PULL™

Printed Circuit Board Card Ejectors & Handles

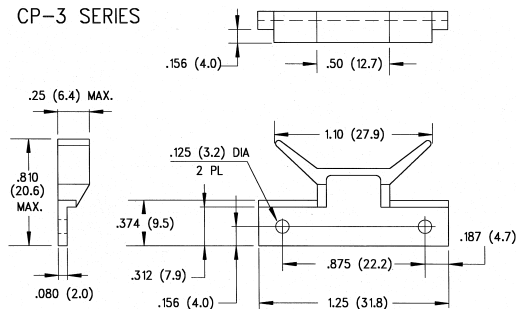


CP-00 SERIES

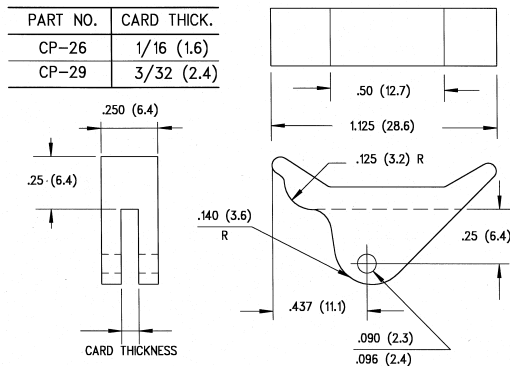


No pin WE for white or specify color

CP-3 SERIES

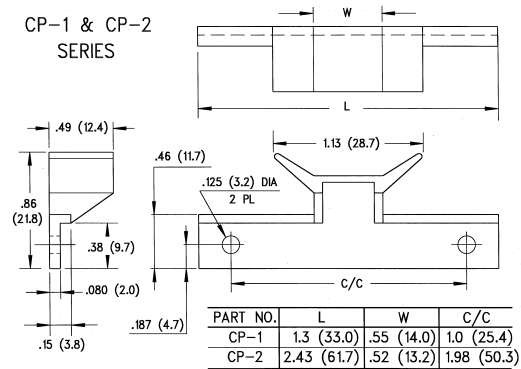


No pins WE for white or specify color

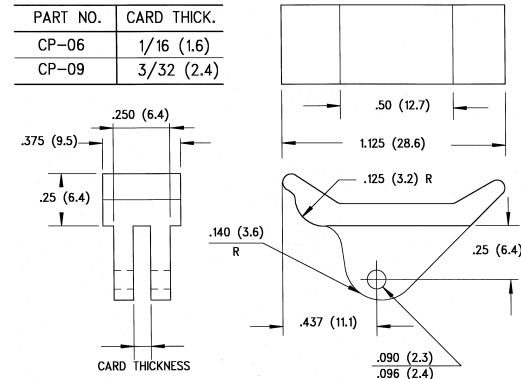


RP-250 pin WE for white or specify color

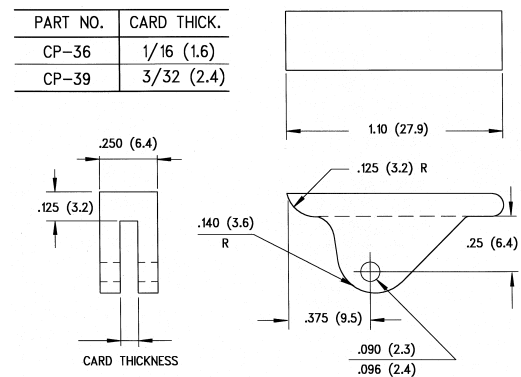
CP-1 & CP-2 SERIES



No pins WE for white or specify color



RP-250 pin WE for white or specify color

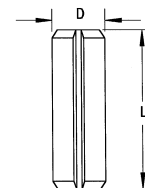


RP-250 pin WE for white or specify color

Spring Pins

Part No.	L	D
RP-250*	1/4 (6.4)	3/32 (2.4)
RP-312	5/16 (8.0)	3/32 (2.4)
RP-375	3/8 (9.5)	1/8 (3.2)

*Works with the CPT-1 handtool



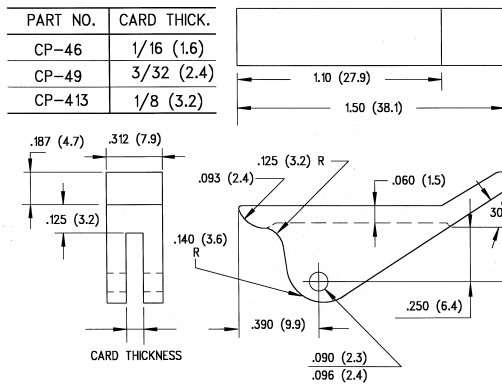
CARD-O-PULL™

Printed Circuit Board Card Ejectors & Handles

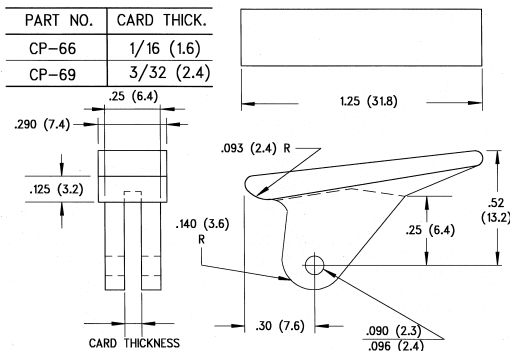
Bivar

CARD-O-PULL™

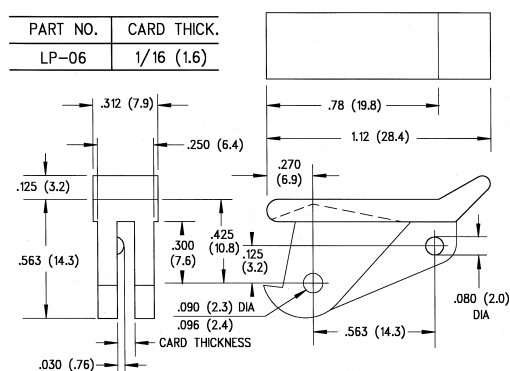
PRINTED CIRCUIT BOARD CARD EJECTORS & HANDLES



RP-312 pin WE for white or specify color



RP-250 pin WE for white or specify color



RP-250 pin WE for white or specify color

Material Specifications:

White Nylon, per ASTM D 4066 PA111 U.L. Rated 94V-2

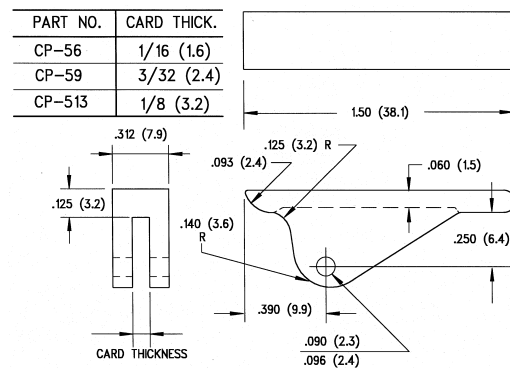
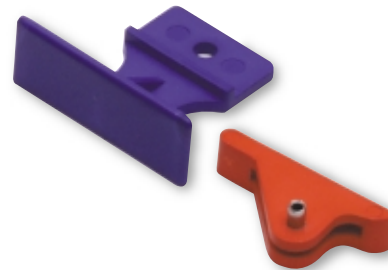
Oxygen Rating Index: Over 28%

Standard Drawing Tolerances, unless otherwise indicated:

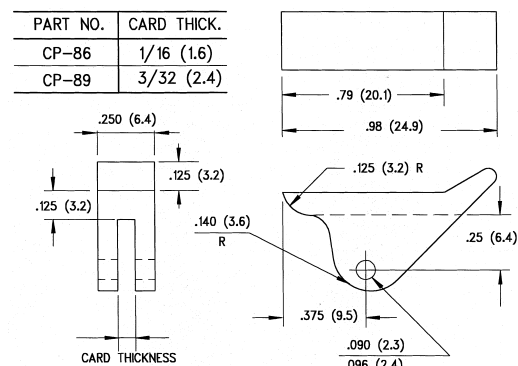
Fractions: = $\pm 1/64$ (.40)

.X = $\pm 1/64$ (.40) .XX = $\pm .010$ (.254) .XXX = $\pm .005$ (.127)

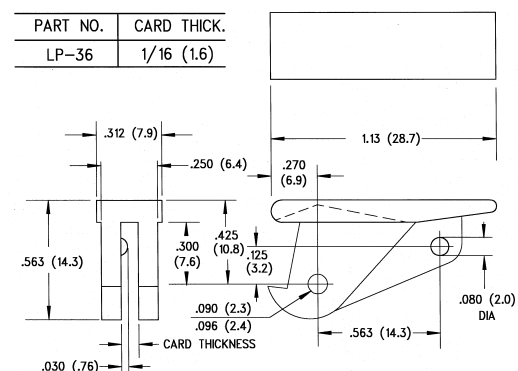
NOTE: Passivated Stainless Steel Spring Pins per MIL-P-10971 furnished with each Ejector or Insertor/Extractor.



RP-312 pin WE for white or specify color



RP-250 pin WE for white or specify color



RP-250 pin WE for white or specify color