

SHOULDER WASHERS

Machine Screw Insulators

- Use with TO-3, TO-3P, TO-66, TO-218, TO-220 and TO-247 Devices
- 125°C maximum recommended service temperature
- Chemically inert
- Recommended torque of 5 to 6 inch-pounds

Material Specifications:

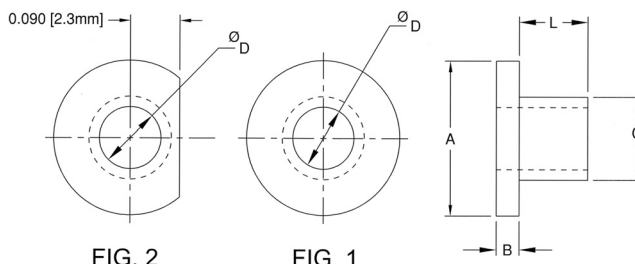
40% Glass filled Polyphenylene Sulfide (PPS)
UL Rated 94V-0

Oxygen Rating Index: Over 45%

Standard Drawing Tolerances:

(unless otherwise indicated)

Fractions: $\pm 1/64$ (0.4) .XX = ± 0.01 (0.25)
.X = ± 0.10 (2.5) .XXX = ± 0.005 (0.13)



Part No.	L	A	B	C	D	Screw Size	FIG.	
SW-031-120	.031 (0.8)	.235 (6.0)	.047 (1.2)	.120 (3.0)	.090 (2.3)	2	1	
SW-063-120	.063 (1.6)							
SW-093-120	.093 (2.4)							
SW-125-120	.125 (3.2)							
SW-187-120	.187 (4.8)							
SW-250-120	.250 (6.4)							
SW-375-120	.375 (9.5)							
SW-032-135	.032 (0.8)	.215 (5.5)	.040 (1.0)	.135 (3.4)	.116 (3.0)		1	
SW-040-140	.040 (1.0)	.245 (6.2)	.040 (1.0)	.140 (3.6)	.119 (3.0)		2	
SW-125-140	.125 (3.2)	.280 (7.1)	.042 (1.1)	.140 (3.6)	.112 (2.8)	4	1	
SW-030-145	.031 (0.8)	.235 (6.0)	.047 (1.2)	.145 (3.7)	.115 (2.9)			
SW-031-145	.031 (0.8)	.280 (7.1)	.047 (1.2)	.145 (3.7)	.118 (3.0)			
SW-063-145	.063 (1.6)	.235 (6.0)	.047 (1.2)	.145 (3.7)	.115 (2.9)			
SW-093-145	.093 (2.4)							
SW-125-145	.125 (3.2)							
SW-187-145	.187 (4.8)							
SW-250-145	.250 (6.4)							
SW-375-145	.375 (9.5)							
SW-125-150	.125 (3.2)	.280 (7.1)	.042 (1.1)	.150 (3.8)	.112 (2.8)			
SW-185-150	.185 (4.7)	.280 (7.1)	.042 (1.1)	.150 (3.8)	.112 (2.8)			
SW-031-170	.031 (0.8)	.290 (7.4)	.047 (1.2)	.170 (4.3)	.140 (3.6)	6	1	
SW-063-170	.063 (1.6)							
SW-093-170	.093 (2.4)							
SW-125-170	.125 (3.2)							
SW-187-170	.187 (4.8)							
SW-250-170	.250 (6.4)							
SW-375-170	.375 (9.5)							
SW-500-170	.500 (12.7)							
SW-031-177	.031 (0.8)	.312 (7.9)	.047 (1.2)	.177 (4.5)	.144 (3.7)			
SW-031-190	.031 (0.8)	.312 (7.9)	.047 (1.2)	.190 (4.8)	.146 (3.7)			

Part No.	L	A	B	C	D	Screw Size	FIG.
SW-031-205	.031 (0.8)	.344 (8.7)	.063 (1.6)	.205 (5.2)	.173 (4.4)	8	1
SW-063-205	.063 (1.6)						
SW-093-205	.093 (2.4)						
SW-125-205	.125 (3.2)						
SW-187-205	.187 (4.8)						
SW-250-205	.250 (6.4)						
SW-375-205	.375 (9.5)						
SW-500-205	.500 (12.7)						
SW-031-260	.031 (0.8)	.399 (10.1)	.063 (1.6)	.260 (6.6)	.200 (5.1)	10	1
SW-063-260	.063 (1.6)						
SW-093-260	.093 (2.4)						
SW-125-260	.125 (3.2)						
SW-187-260	.187 (4.8)						
SW-250-260	.250 (6.4)						
SW-375-260	.375 (9.5)						
SW-500-260	.500 (12.7)						
SW-031-312	.031 (0.8)	.513 (13.0)	.063 (1.6)	.312 (7.9)	.260 (6.6)	1/4	1
SW-063-312	.063 (1.6)						
SW-093-312	.093 (2.4)						
SW-125-312	.125 (3.2)						
SW-187-312	.187 (4.8)						
SW-250-312	.250 (6.4)						
SW-375-312	.375 (9.5)						
SW-500-312	.500 (12.7)						
SW-031-360	.031 (0.8)	.620 (15.7)	.063 (1.6)	.360 (9.1)	.320 (8.1)	5/16	1
SW-063-360	.063 (1.6)						
SW-093-360	.093 (2.4)						
SW-125-360	.125 (3.2)						
SW-187-360	.187 (4.8)						
SW-250-360	.250 (6.4)						
SW-375-360	.375 (9.5)						
SW-500-360	.500 (12.7)						