



## Features

- Thin 5 mm square SMD
- Three different operating forces
- 0.8 mm height without knob  
(1.5 mm with knob)
- Compatible with surface mount reflow soldering processes



Model STJN-5 is currently available, although not recommended for new designs.

■ RoHS compliant\*

## STJN-5 SMD Thin Tact Switch

### Electrical Characteristics

Max. Power Rating	12 VDC max., 50 mA
Contact Resistance	100 milliohms max.
Insulation Resistance	100 megohms min., 100 VDC
Dielectric Strength	AC 250 V for 1 minute
Bounce	
On	3 ms max.
Off	10 ms max.
Circuit	N.O. SPST

### Mechanical Characteristics

Mechanical Life	
100 gf + 160 gf	500,000 cycles min.
260 gf	200,000 cycles min.
Actuation Force	
100 gf ± 50 gf (1.0 N ± 0.5 N)	
160 gf ± 50 gf (1.6 N ± 0.5 N)	
260 gf ± 60 gf (2.6 N ± 0.6 N)	
Stroke	0.25 mm +0.10/-0.20

### General Characteristics

Switch Type	(N.O.) SPST
Operating Temperature Range	-20 °C to +70 °C
Storage Temperature Range	-40 °C to +85 °C

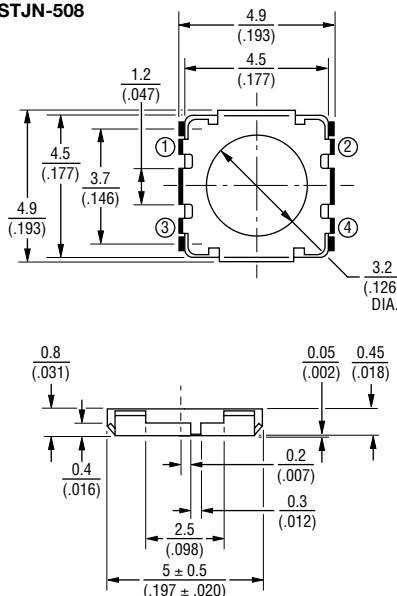
### How to Order

**STJ N - 5 08 - N TR**

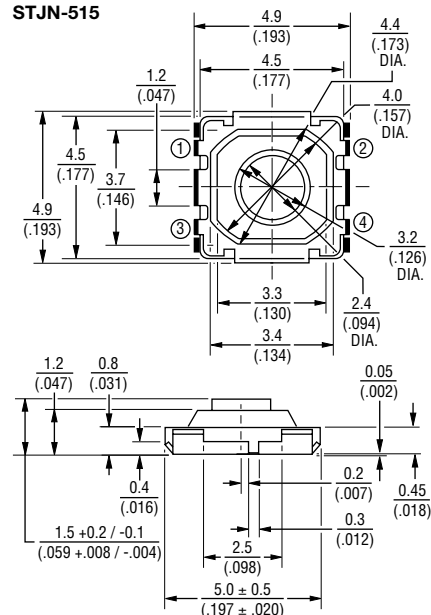
Model	Thin SMD Tact Switch
Product Code	N = Non-washable
Size	5 = 5 mm
Height	08 = 0.8 mm (without knob) 15 = 1.5 mm (with knob)
Actuating Force	K = 100 gf (1.0 N) N = 160 gf (1.6 N) R = 260 gf (2.6 N)
Packaging	TR = Embossed Tape 5,000 pcs./reel

### Product Dimensions

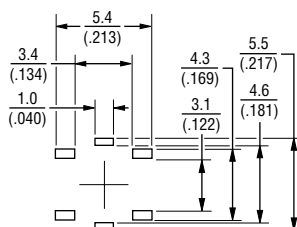
STJN-508



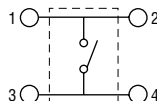
STJN-515



### Recommended PCB Layout

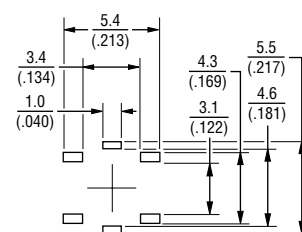


### Circuit Diagram

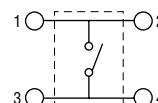


TOLERANCES: ±.38 EXCEPT WHERE NOTED.  
DIMENSIONS: MM (IN)

### Recommended PCB Layout



### Circuit Diagram



### Reflow Soldering Profile

