

Features

- Available sharp click feel with a positive tactile feedback
- Ultra-miniature and lightweight structure suitable for high density mounting
- Economical with high reliability
- RoHS compliant*



Model STSS is currently available, although not recommended for new designs.

- Insert molding in the contact with special treatment prevents flux buildup during soldering and permits autodipping

STSS SMD 4 mm Sealed Tact Switch

Electrical Characteristics

Electrical Life100,000 cycles
 RatingDC 12 V 50 mA
 Contact Resistance100 milliohms max.
 Insulation Resistance100 megohms, DC 100 V min.
 Dielectric Strength100 V AC for 1 minute
 Contact Arrangement1 pole 1 position

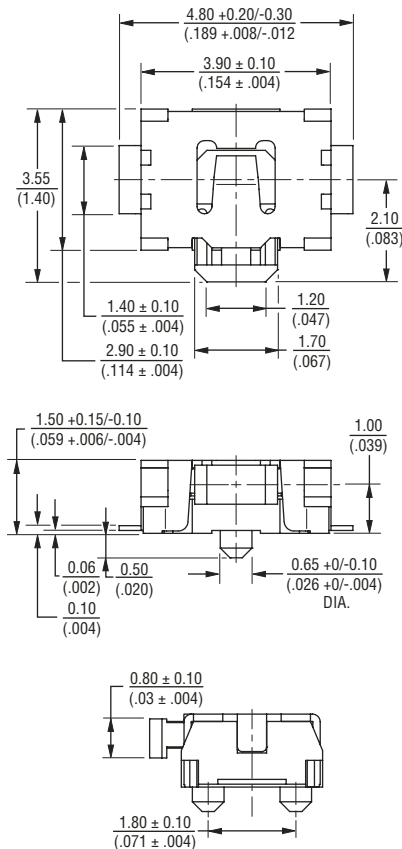
Environmental Characteristics

Operation Force220 g \pm 65 g
 Stroke0.2 + 0.10/- 0.05 mm
 Operating Temperature-25 °C to +70 °C
 Storage Temperature-30 °C to +80 °C
 Vibration TestMil-STD-202F, Method 201A
 Frequency10-55-10 Hz/1 minute
 DirectionsX,Y,Z, three mutually perpendicular directions
 Time2 hours each direction
 Shock TestMIL-STD-202F, Method 213B, Condition A
 Gravity50 G (peak value), 11 msec
 Direction & Times6 sides and 3 times in each direction

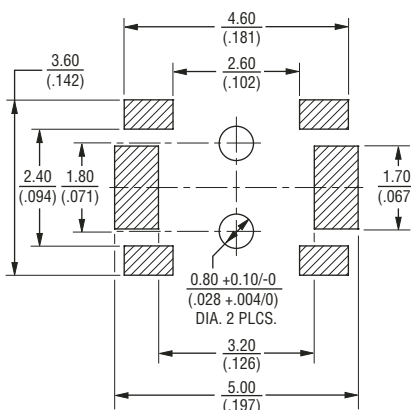
Physical Characteristics

Cover MaterialsStainless Steel
 Base MaterialsLCP high temp. thermoplastic, white
 Actuator MaterialsLCP high temp. thermoplastic, black
 Contact Disc MaterialsStainless with silver cladding
 Terminal MaterialsBrass with silver plated
 TapeTeflon
 Hand Soldering ProcessUse a soldering iron of 30 watts, controlled at 320 °C (608 °F) for approximately 2 seconds while applying solder
 Reflow Soldering ProcessWhen applying reflow soldering, the peak temperature or the reflow oven should be set to 240 °C
 Packaging3,500 pieces per reel

Product Dimensions



Recommended PCB Layout

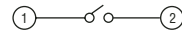


DIMENSIONS ARE: $\frac{\text{MM}}{\text{(INCHES)}}$

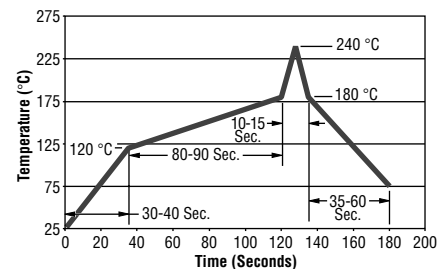
How to Order

Model **STSS - 32 - TR**
 Terminal
 Embossed Tape
 TR = 3500 Pcs./180 mm Reel

Circuit Diagram



Reflow Soldering Profile

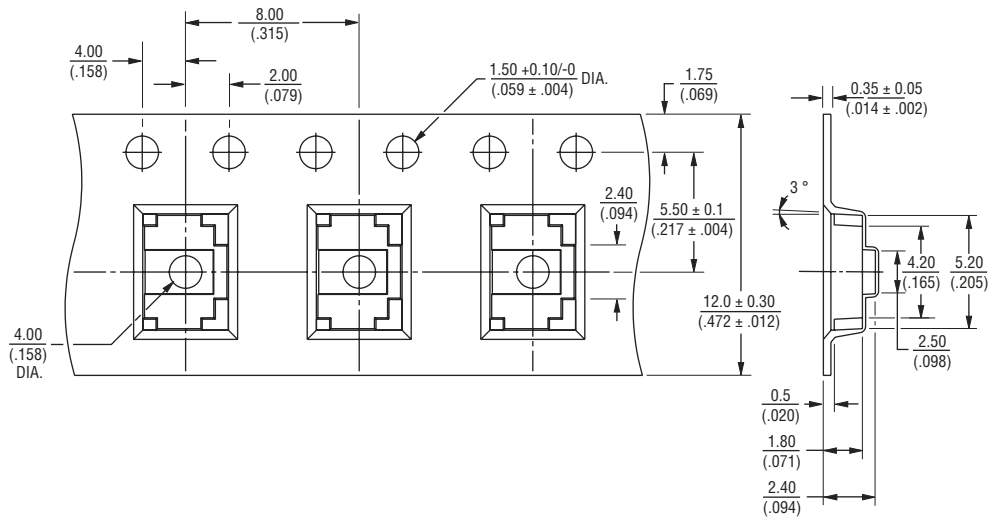


*RoHS Directive 2002/95/EC Jan 27 2003 including Annex.
 Specifications are subject to change without notice.
 Customers should verify actual device performance in their specific applications.

STSS SMD 4 mm Sealed Tact Switch

BOURNS®

Packaging Dimensions



Reliable Electronic Solutions

Asia-Pacific:

TEL +886-2 25624117

FAX +886-2 25624116

Europe:

TEL +41-41 7685555

FAX +41-41 7685510

The Americas:

TEL +1-951 781-5500

FAX +1-951 781-5700

www.bourns.com