

# Central<sup>TM</sup> Semiconductor Corp.

145 Adams Avenue, Hauppauge, NY 11788 USA  
Tel: (631) 435-1110 • Fax: (631) 435-1824

Manufacturers of World Class Discrete Semiconductors

## CBR4M-L010M SERIES

GLASS PASSIVATED JUNCTION  
SILICON BRIDGE RECTIFIER  
4.0 AMP, 100 THRU 1000 VOLTS

CASE DMM

### DESCRIPTION

The CENTRAL SEMICONDUCTOR CBR4M-L010M series types are silicon single phase full wave bridge rectifiers designed for general purpose, high current applications. **THIS DEVICE IS MANUFACTURED WITH A GLASS PASSIVATED CHIP FOR OPTIMUM RELIABILITY.**

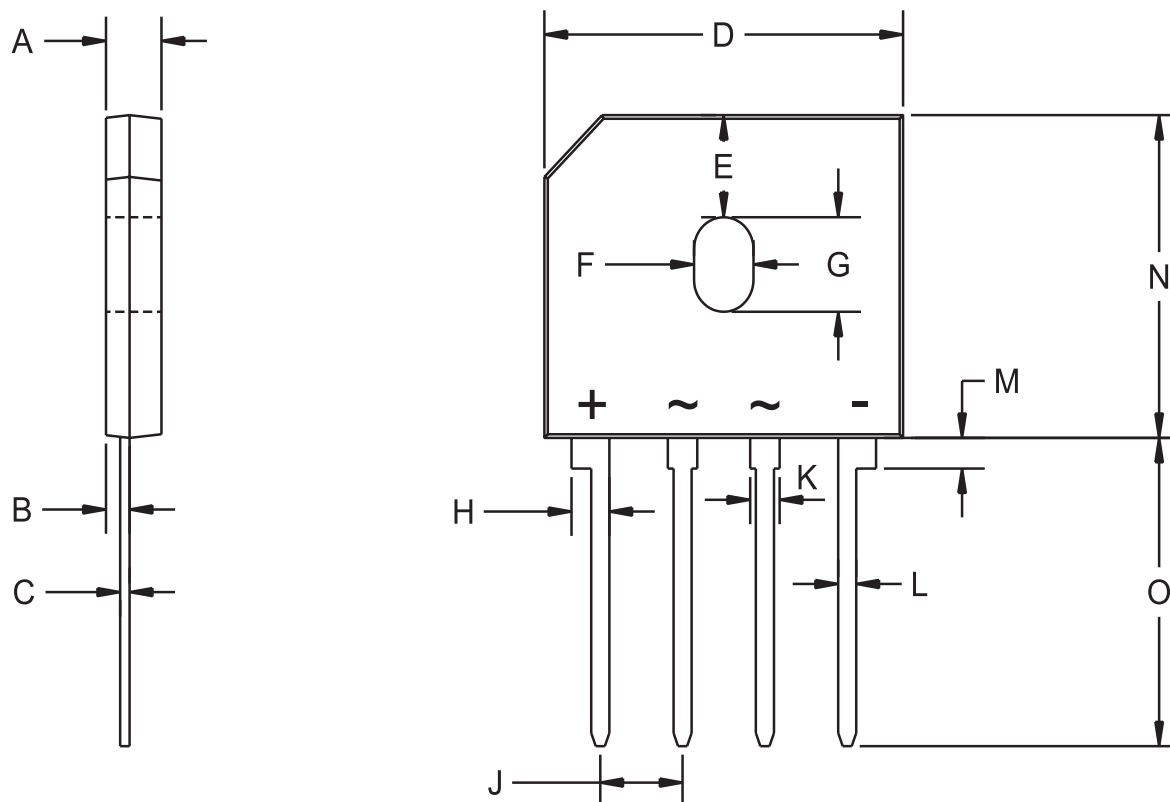
### MAXIMUM RATINGS ( $T_A=25^{\circ}\text{C}$ unless otherwise noted)

		CBR4M -L010M	CBR4M -L020M	CBR4M -L040M	CBR4M -L060M	CBR4M -L080M	CBR4M -L100M	UNITS
Peak Repetitive Reverse Voltage	$V_{RRM}$	100	200	400	600	800	1000	V
DC Blocking Voltage	$V_R$	100	200	400	600	800	1000	V
RMS Reverse Voltage	$V_{R(RMS)}$	70	140	280	420	560	700	V
Average Forward Current ( $T_C=100^{\circ}\text{C}$ )	$I_O$				4.0			A
Peak Forward Surge Current	$I_{FSM}$				150			A
Operating and Storage								
Junction Temperature	$T_J, T_{stg}$				-65 to +150			$^{\circ}\text{C}$
Thermal Resistance	$\theta_{JC}$				4.0			$^{\circ}\text{C/W}$

### ELECTRICAL CHARACTERISTICS PER DIODE ( $T_A=25^{\circ}\text{C}$ unless otherwise noted)

<u>SYMBOL</u>	<u>TEST CONDITIONS</u>	<u>MIN</u>	<u>TYP</u>	<u>MAX</u>	<u>UNITS</u>
$I_R$	$V_R = \text{Rated } V_{RRM}$			5.0	$\mu\text{A}$
$I_R$	$V_R = \text{Rated } V_{RRM}, T_C=100^{\circ}\text{C}$			500	$\mu\text{A}$
$V_F$	$I_F=4.0\text{A}$			1.0	V
$C_J$	$V_R=4.0\text{V}, f=1.0\text{MHz}$		270		pF

## CASE DMM - MECHANICAL OUTLINE



R1

DIMENSIONS				
SYMBOL	INCHES		MILLIMETERS	
	MIN	MAX	MIN	MAX
A	0.130	0.140	3.30	3.56
B	0.030	0.040	0.76	1.02
C	0.018	0.022	0.46	0.56
D	0.860	0.880	21.84	22.35
E	0.230		5.85	
F	0.150		3.81	
G	0.215		5.46	
H	0.085	0.100	2.16	2.54
J	0.190	0.210	4.83	5.33
K	0.065	0.080	1.65	2.03
L	0.040	0.050	1.02	1.27
M	0.060	0.080	1.52	2.03
N	0.720	0.740	18.30	18.80
O	0.690	0.710	17.53	18.03

Case DMM (REV: R1)

**Central<sup>™</sup>**  
**Semiconductor Corp.**

145 Adams Avenue, Hauppauge, NY 11788 USA

Tel: (631) 435-1110 • Fax: (631) 435-1824

R1 (18- April 2002)