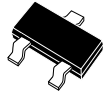


CMPS5061  
CMPS5062  
CMPS5063  
CMPS5064

**SURFACE MOUNT  
SILICON CONTROLLED RECTIFIER**



**SOT-23 CASE**

**Central™**  
**Semiconductor Corp.**

**DESCRIPTION:**

The CENTRAL SEMICONDUCTOR CMPS5061 Series types are epoxy molded PNP Silicon Controlled Rectifiers manufactured in an SOT-23 case, designed for control systems and sensing circuit applications.

**Marking codes are P2A, P2B, P2C, and P2D respectively.**

**MAXIMUM RATINGS** ( $T_A=25^\circ\text{C}$ )

	<u>SYMBOL</u>	<u>CMPS5061</u>	<u>CMPS5062</u>	<u>CMPS5063</u>	<u>CMPS5064</u>	<u>UNITS</u>
Peak Repetitive Off-State Voltage	$V_{DRM}$	100	200	300	400	V
Peak Repetitive Reverse Voltage	$V_{RRM}$	100	200	300	400	V
RMS On-State Current	$I_T(RMS)$			0.8		A
Average On-State Current ( $T_C=67^\circ\text{C}$ )	$I_T(AV)$			0.51		A
Power Dissipation	$P_D$			350		mW
Operating and Storage						
Junction Temperature	$T_J, T_{stg}$		-65 to +150			$^\circ\text{C}$
Thermal Resistance	$\Theta_{JA}$		357			$^\circ\text{C/W}$

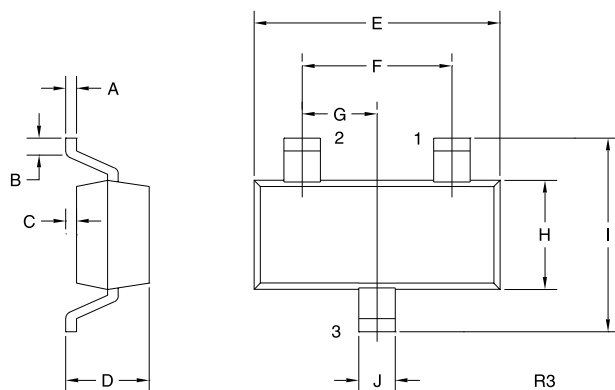
**ELECTRICAL CHARACTERISTICS** ( $T_A=25^\circ\text{C}$  unless otherwise noted)

		<u>CMPS5061</u>		<u>CMPS5062</u>		<u>CMPS5063</u>		<u>CMPS5064</u>		<u>UNITS</u>
<u>SYMBOL</u>	<u>TEST CONDITIONS</u>	<u>MIN</u>	<u>MAX</u>	<u>MIN</u>	<u>MAX</u>	<u>MIN</u>	<u>MAX</u>	<u>MIN</u>	<u>MAX</u>	
$I_{DRM}$	$V_D=\text{Rated } V_{DRM}, R_{GK}=1K\Omega$		1.0		1.0		1.0		1.0	$\mu\text{A}$
$I_{RRM}$	$V_D=\text{Rated } V_{DRM}, R_{GK}=1K\Omega$		1.0		1.0		1.0		1.0	$\mu\text{A}$
$I_{DRM}$	$V_D=\text{Rated } V_{DRM}, R_{GK}=1K\Omega, T_C=125^\circ\text{C}$		50		50		50		50	$\mu\text{A}$
$I_{RRM}$	$V_D=\text{Rated } V_{DRM}, R_{GK}=1K\Omega, T_C=125^\circ\text{C}$		50		50		50		50	$\mu\text{A}$
$V_T$	$I_T=1.2A$		1.7		1.7		1.7		1.7	V
$I_{GT}$	$V_D=7.0V, R_L=100\Omega, R_{GK}=1K\Omega$		200		200		200		200	$\mu\text{A}$
$V_{GT}$	$V_D=7.0V, R_L=100\Omega, R_{GK}=1K\Omega$		0.8		0.8		0.8		0.8	V
$V_{GD}$	$V_D=\text{Rated } V_{DRM}, R_L=100\Omega, T_C=125^\circ\text{C}$	0.1		0.1		0.1		0.1		V
$I_H$	$V_D=7.0, R_{GK}=1K\Omega$		5.0		5.0		5.0		5.0	mA
$t_{ON}$	$V_D=\text{Rated } V_{DRM}, I_{GT}=1.0mA, R_{GK}=1.0\Omega,$ $di/dt=6.0A/\mu\text{s}$		2.8 TYP		2.8 TYP		2.8 TYP		2.8 TYP	$\mu\text{s}$

R6 ( 12-June 2001)

**SURFACE MOUNT  
SILICON CONTROLLED RECTIFIER**

**MECHANICAL OUTLINE - SOT-23**



**LEAD CODE:**

- 1) CATHODE
- 2) GATE
- 3) ANODE

**MARKING CODES:**

CMPS5061:P2A  
CMPS5062:P2B  
CMPS5063:P2C  
CMPS5064:P2D

DIMENSIONS				
SYMBOL	INCHES		MILLIMETERS	
	MIN	MAX	MIN	MAX
A	0.003	0.007	0.08	0.18
B	0.006	-	0.15	-
C	-	0.005	-	0.13
D	0.035	0.043	0.89	1.09
E	0.110	0.120	2.80	3.05
F	0.075		1.90	
G	0.037		0.95	
H	0.047	0.055	1.19	1.40
I	0.083	0.098	2.10	2.49
J	0.014	0.020	0.35	0.50

SOT-23 (REV: R3)