

CentralTM Semiconductor Corp.

145 Adams Avenue, Hauppauge, NY 11788 USA

Tel: (631) 435-1110 • Fax: (631) 435-1824

Manufacturers of World Class Discrete Semiconductors

CRHV10F SERIES

10KV THRU 18KV
HIGH VOLTAGE RECTIFIER
FAST RECOVERY

AXIAL LEAD EPOXY CASE

DESCRIPTION

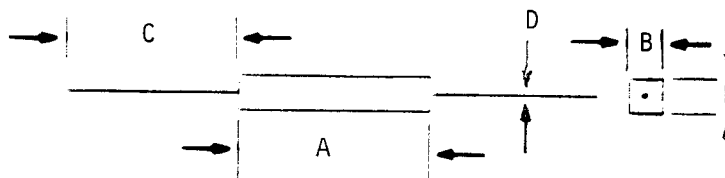
The CENTRAL SEMICONDUCTOR CRHV10F Series types are High Voltage Miniature Rectifiers designed for voltage multiplier applications where fast reverse recovery time is required.

MAXIMUM RATINGS ($T_A = 25^\circ\text{C}$)

	CRHV10F -10	CRHV10F -12	CRHV10F -15	CRHV10F -18	UNIT
Peak Repetitive Reverse Voltage	10	12	15	18	kV
Average Forward Current		5.0			mA
Peak Forward Surge Current		3.0			A
Operating and Storage Junction Temperature		-65 TO +150			$^\circ\text{C}$

ELECTRICAL CHARACTERISTICS ($T_A = 25^\circ\text{C}$)

SYMBOL	TEST CONDITIONS	MIN	MAX	UNIT
I_R	$V_R = \text{Rated } V_{RRM}$		1.0	μA
V_F	$I_F = \text{Rated } I_O$ (10kV, 12kV)		24	V
V_F	$I_F = \text{Rated } I_O$ (15kV)		30	V
V_F	$I_F = \text{Rated } I_O$ (18kV)		36	V
t_{rr}			200	ns



DIM	INCH
A (-10, -12, -15)	.400 MAX
A (-18)	.620 MAX
B	.150 MAX
C	.400 MIN
D	.020