

CentralTM Semiconductor Corp.

145 Adams Ave., Hauppauge, NY 11788 USA

Phone (631) 435-1110 FAX (631) 435-1824

Manufacturers of World Class Discrete Semiconductors

www.centrasemi.com

CRSH1 SERIES**SCHOTTKY BARRIER RECTIFIER
1.0 AMPS, 20 THRU 100 VOLTS****JEDEC DO-41 CASE**DESCRIPTION

The CENTRAL SEMICONDUCTOR CRSH1 Series types are Schottky Barrier Rectifiers mounted in an axial lead epoxy case using metal to silicon junction to yield low forward voltage drop and instantaneous reverse recovery times.

MAXIMUM RATINGS ($T_A=25^{\circ}\text{C}$ unless otherwise noted)

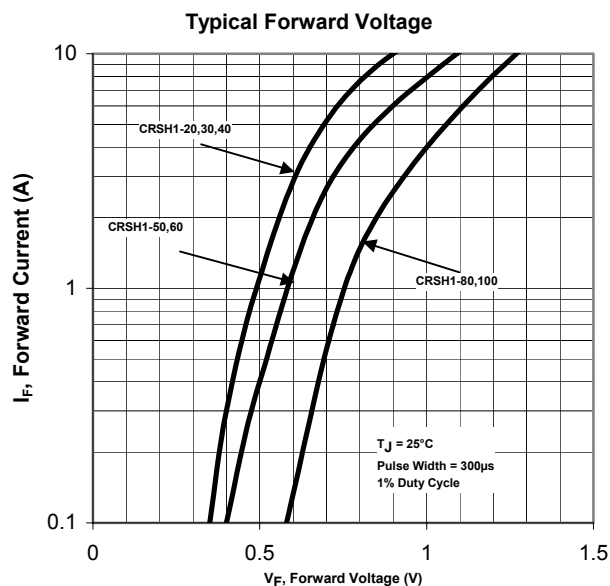
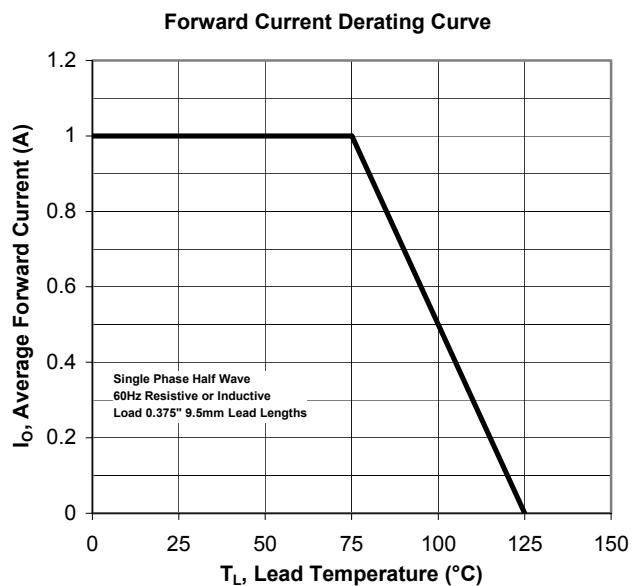
	SYMBOL	CRSH1 -2	CRSH1 -3	CRSH1 -4	CRSH1 -5	CRSH1 -6	CRSH1 -8	CRSH1 -10	UNITS
Peak Repetitive Reverse Voltage	V_{RRM}	20	30	40	50	60	80	100	V
DC Blocking Voltage	V_R	20	30	40	50	60	80	100	V
RMS Reverse Voltage	$V_{R(RMS)}$	14	21	28	35	42	56	70	V
Average Forward Current ($T_L=75^{\circ}\text{C}$)	I_O			1.0					A
Peak Forward Surge Current (8.3ms)	I_{FSM}			30					A
Junction Temperature	T_J			-65 to +125					$^{\circ}\text{C}$
Storage Temperature	T_{stg}			-65 to +125					$^{\circ}\text{C}$
Thermal Resistance	Θ_{JA}			80					$^{\circ}\text{C/W}$

ELECTRICAL CHARACTERISTICS ($T_A=25^{\circ}\text{C}$ unless otherwise noted)

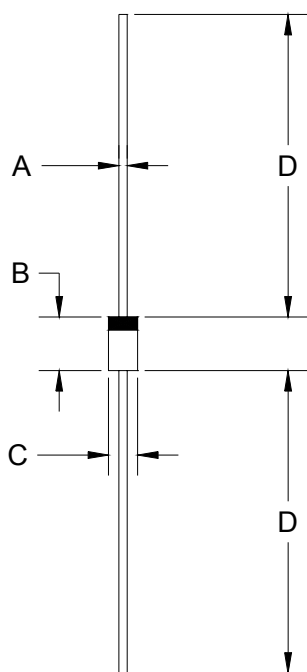
SYMBOL	TEST CONDITIONS	MIN	TYP	MAX	UNITS
I_R	$V_R=\text{Rated } V_{RRM}$			0.5	mA
I_R	$V_R=\text{Rated } V_{RRM}, T_A=100^{\circ}\text{C}$			10	mA
V_F	$I_F=1.0\text{A (20V THRU 40V)}$			0.5	V
V_F	$I_F=1.0\text{A (50V AND 60V)}$			0.7	V
V_F	$I_F=1.0\text{A (80V AND 100V)}$			0.85	V
C_J	$V_F=4.0\text{V}, f=1.0\text{MHz}$		110		pF

(SEE REVERSE SIDE)

CRSH1 SERIES RATING AND CHARACTERISTIC CURVES



Mechanical Drawing: DO-41



DIMENSIONS				
SYMBOL	INCHES		MILLIMETERS	
	MIN	MAX	MIN	MAX
A	0.028	0.034	0.71	0.86
B	0.160	0.205	4.06	5.21
C	0.080	0.107	2.03	2.72
D	1.000	-	25.40	-

DO-41 (REV: R1)

R1

CentralTM
Semiconductor Corp.

145 Adams Ave., Hauppauge, NY 11788 USA
Phone (631) 435-1110 FAX (631) 435-1824

Manufacturers of World Class Discrete Semiconductors

www.centrasemi.com