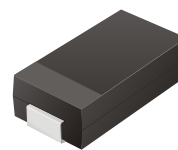


## CDBA220 Thru CDBA2100

**Reverse Voltage: 20 - 100 Volts**

**Forward Current: 2.0 Amp**

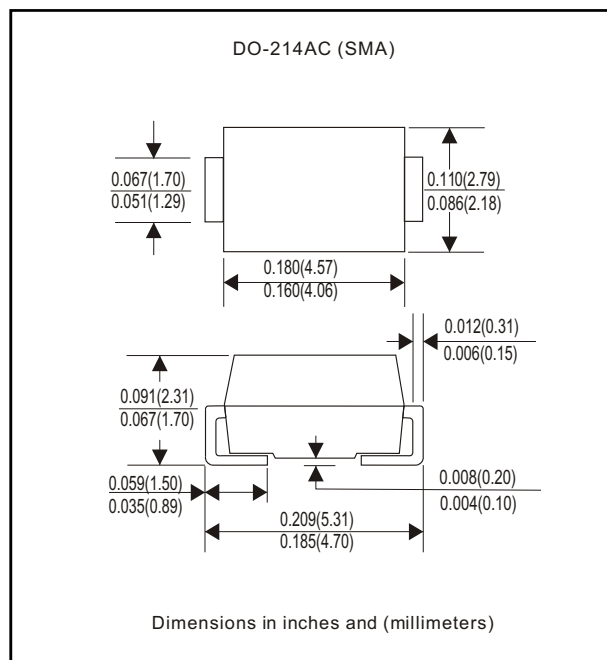


### Features

- Ideal for surface mount applications
- Easy pick and place
- Plastic package has Underwriters Lab. flammability classification 94V-0
- Built-in strain relief
- Low forward voltage drop

### Mechanical Data

- Case: JEDEC DO-214AC molded plastic
- Terminals: solderable per MIL-STD-750, method 2026
- Polarity: Color band denotes cathode end
- Mounting position: Any
- Approx. Weight: 0.064 gram



### Maximum Ratings and Electrical Characteristics

Parameter	Symbol	CDBA220	CDBA240	CDBA260	CDBA2100	Unit
Max.Repetitive Peak Reverse Voltage	V <sub>RRM</sub>	20	40	60	100	V
Max. DC Blocking Voltage	V <sub>DC</sub>	20	40	60	100	V
Max. RMS Voltage	V <sub>RMS</sub>	14	28	42	70	V
Peak Surge Forward Current 8.3ms single halfsine-wave superimposed on rateload ( JEDEC method )	I <sub>FSM</sub>	50				A
Max. Average Forward Current	I <sub>o</sub>	2.0				A
Max. Instantaneous Forward Current at 2.0 A	V <sub>F</sub>	0.50		0.70	0.85	V
Max. DC Reverse Current at Rated DC Blocking Voltage      Ta=25°C	I <sub>R</sub>	0.5				mA
Ta=100°C		20			10	
Max. Thermal Resistance (Note 1)	R <sub>θJA</sub> R <sub>θJL</sub>	75 17				°C/W
Operating Junction temperature	T <sub>j</sub>	-50 to +125				°C
Storage Temperature	T <sub>STG</sub>	-65 to +150				°C

Note 1: Thermal resistance from junction to ambient and junction to lead P.C.B. Mounted on 0.2 x 0.2 copper pad areas

## Rating and Characteristic Cures (CDBA220 Thru CDBA2100)

Fig. 1 - Reverse Characteristics

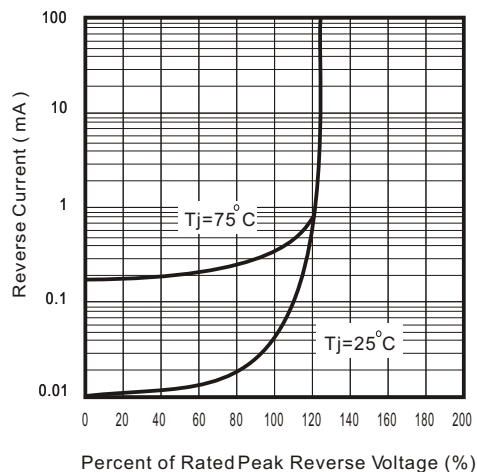


Fig.2 - Forward Characteristics

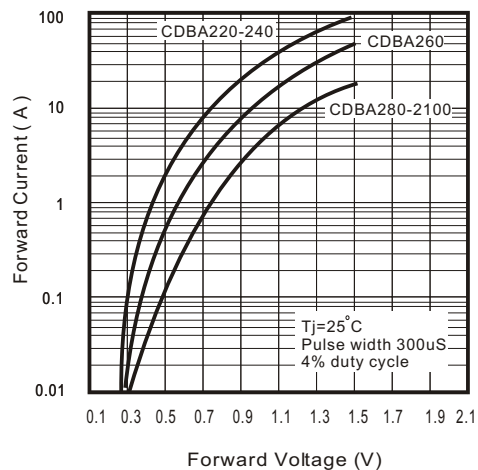


Fig. 3 - Junction Capacitance

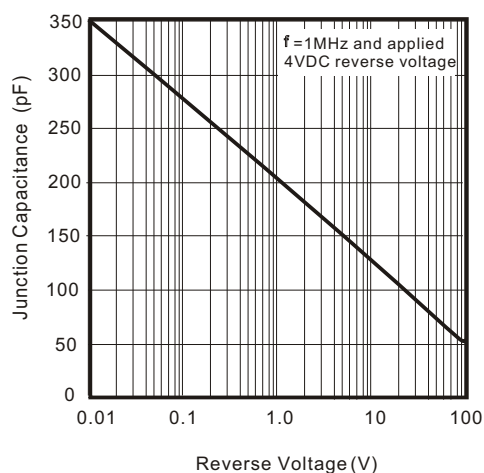


Fig. 4 - Current Derating Curve

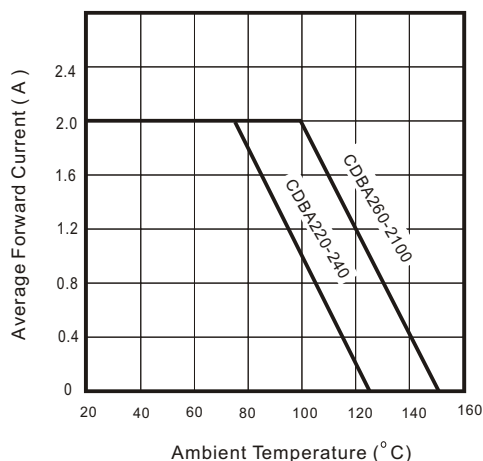


Fig. 5 - Non Repetitive Forward Surge Current

