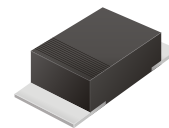


CSFM101 Thru CSFM105

Reverse Voltage: 50 - 600 Volts

Forward Current: 1.0 Amp

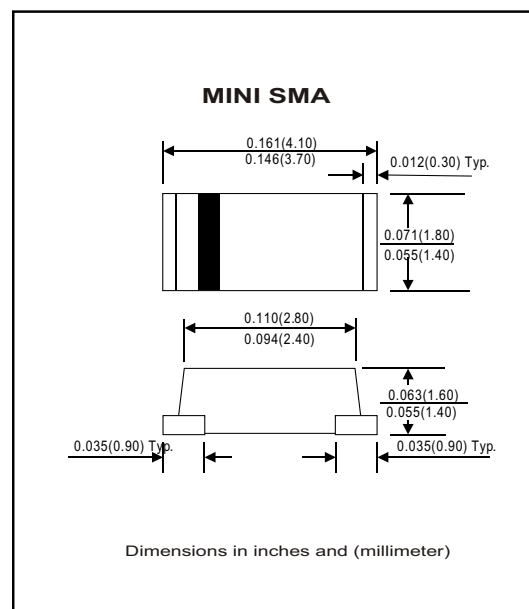


Features

- Ideal for surface mount applications
- Easy pick and place
- Plastic package has Underwriters Lab. flammability classification 94V-0
- Super fast recovery time 35-50 nS
- Built-in strain relief
- Low forward voltage drop

Mechanical Data

- Case: Mini-SMA/SOD-123 molded plastic
- Terminals: solderable per MIL-STD-750, method 2026
- Polarity: Color band denotes cathode end
- Mounting position: Any
- Approx. Weight: 0.04 gram



Maximum Ratings and Electrical Characteristics

Parameter	Symbol	CSFM 101	CSFM 102	CSFM 103	CSFM 104	CSFM 105	Unit
Max. Repetitive Peak Reverse Voltage	V _{RRM}	50	100	200	400	600	V
Max. DC Blocking Voltage	V _{DC}	50	100	200	400	600	V
Max. RMS Voltage	V _{RMS}	35	70	140	280	420	V
Peak Surge Forward Current 8.3ms single halfsine-wave superimposed on rate load (JEDEC method)	I _{FSM}	30					A
Max. Average Forward Current	I _O	1.0					A
Max. Instantaneous Forward Current at 1.0 A	V _F	0.95			1.3	1.5	V
Reverse recovery time	T _{rr}	35				50	nS
Max. DC Reverse Current at Rated DC Blocking Voltage Ta=25°C Ta=100°C	I _R	5.0 100					uA
Typical. Thermal Resistance (Note 1)	R _{θJA}	42					°C/W
Operating Junction Temperature	T _j	-55 to +150					°C
Storage Temperature	T _{STG}	-55 to +150					°C

Note 1: Thermal resistance from junction to ambient.

Rating and Characteristic Curves (CSFM101 Thru CSFM105)

Fig. 1 - Reverse Characteristics

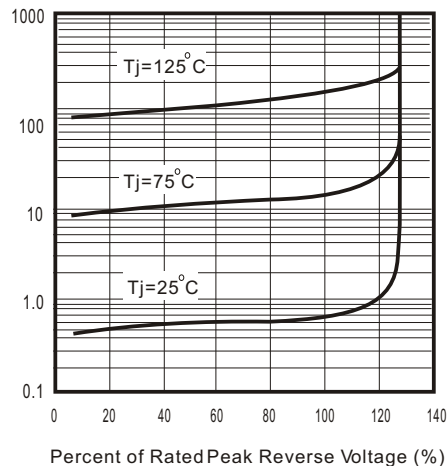


Fig.2 - Forward Characteristics

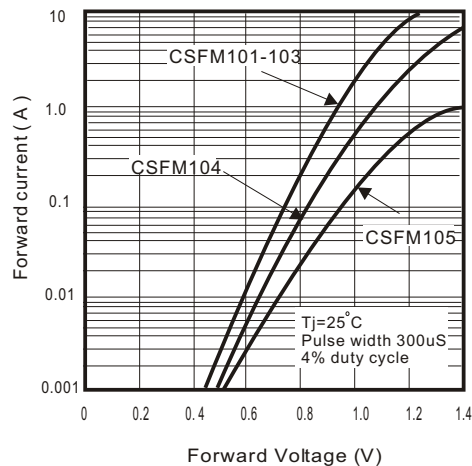


Fig. 3 - Junction Capacitance

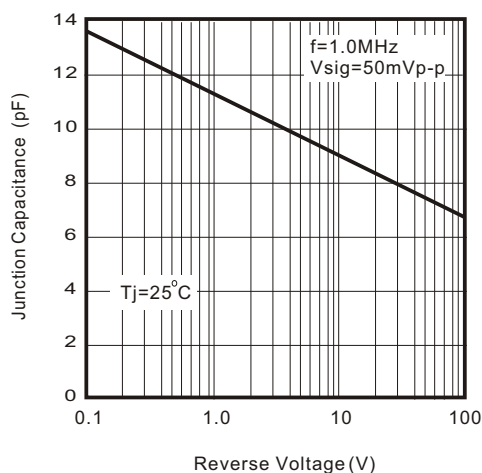


Fig. 4 - Non Repetitive Forward Surge Current

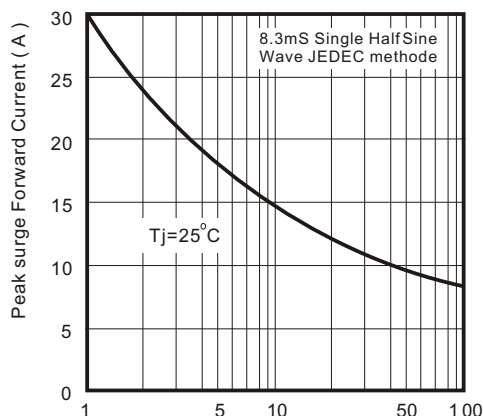


Fig. 5 - Test Circuit Diagram and Reverse Recovery Time Characteristics

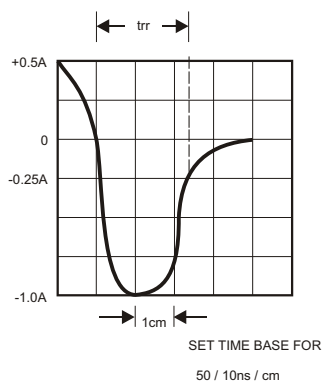
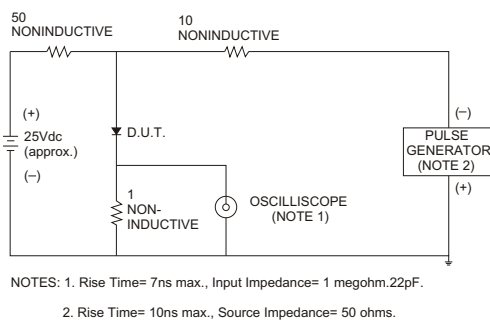


Fig. 6 - Current Derating Curve

