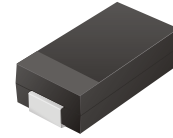


CZRB2110 -CZRB2350

Voltage: 110-350 Volts

Power: 2.0 Watts

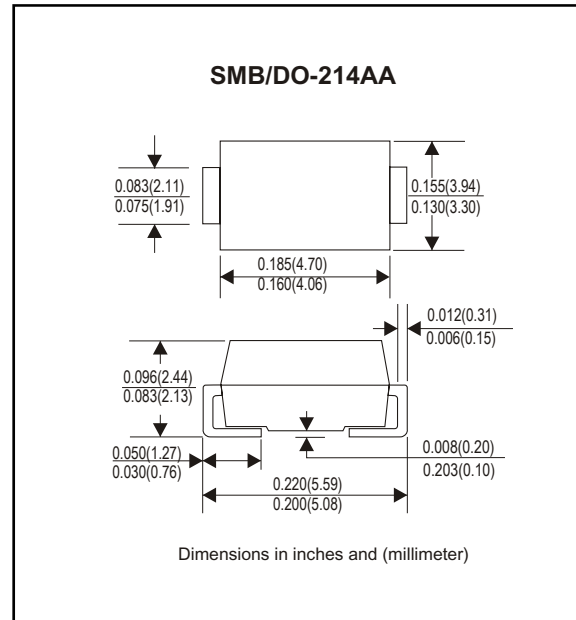


Features

- Low profile package
- Built-in strain relief
- 5 & 10% Voltage Tolerances available
- Excellent clamping capability
- Wide voltage range
- Meets UL specification 94V-0

Mechanical Data

- Case: JEDEC DO-214AA molded plastic
- Terminals: Solder plated, solderable MIL-STD-750, method 2026
- Weight: 0.003 ounce, 0.093 gram
- Polarity: Color band denotes cathode end
- Mounting position: Any
- Approx. Weight: 0.093 gram



Maximum Ratings and Electrical Characteristics

| Maximum Ratings | CZRB2110 to CZRB2350 | Units |
|--|----------------------|-------|
| DC Power Dissipation with TL = 75°C ...PD | 2 | Watt |
| Lead Length = .375 Inches Derate Above 50°C | 6.67 | mW/°C |
| Operating & Storage Temperature Range...T _J , T _{STRG} | -65 to 100 | °C |

Rating and Characteristic Curevs (CZRB2110 Thru CZRB2350)

ELECTRICAL CHARACTERISTICS

(T_A=25°C unless otherwise noted)

| Device | Nominal Zener Voltage V _Z | Test Current I _{ZT} | Maximum Zener Impedance | | | Max. Reverse Leakage Current | | Maximum Forward Voltage @ I _F = 0.2A |
|----------|--|------------------------------------|-----------------------------------|-----------------------------------|-----------------|---------------------------------|----------------|--|
| | | | Z _{ZT} @ I _{ZT} | Z _{ZK} @ I _{ZK} | I _{ZK} | I _R @ | V _R | |
| | | | (Ohms) | (Ohms) | (mA) | (uA) | (Volts) | |
| CZRB2110 | 110 | 5 | 750 | 5000 | 0.25 | 0.5 | 80 | 1.2 |
| CZRB2115 | 115 | 5 | 750 | 5000 | 0.25 | 0.5 | 85 | 1.2 |
| CZRB2120 | 120 | 5 | 850 | 5000 | 0.25 | 0.5 | 90 | 1.2 |
| CZRB2130 | 130 | 5 | 1000 | 5000 | 0.25 | 0.5 | 95 | 1.2 |
| CZRB2140 | 140 | 5 | 1200 | 5000 | 0.25 | 0.5 | 105 | 1.2 |
| CZRB2150 | 150 | 5 | 1300 | 5000 | 0.25 | 0.5 | 110 | 1.2 |
| CZRB2160 | 160 | 5 | 1500 | 5000 | 0.25 | 0.5 | 120 | 1.2 |
| CZRB2170 | 170 | 5 | 2200 | 5000 | 0.25 | 0.5 | 130 | 1.2 |
| CZRB2180 | 180 | 5 | 2200 | 5000 | 0.25 | 0.5 | 140 | 1.2 |
| CZRB2190 | 190 | 5 | 2500 | 5000 | 0.25 | 0.5 | 150 | 1.2 |
| CZRB2200 | 200 | 5 | 2500 | 8000 | 0.25 | 0.5 | 165 | 1.2 |
| CZRB2210 | 210 | 5 | 5000 | 9000 | 0.25 | 0.5 | 165 | 1.2 |
| CZRB2220 | 220 | 5 | 5000 | 9000 | 0.25 | 0.5 | 170 | 1.2 |
| CZRB2230 | 230 | 5 | 5000 | 9000 | 0.25 | 0.5 | 175 | 1.2 |
| CZRB2240 | 240 | 5 | 5000 | 9000 | 0.25 | 0.5 | 180 | 1.2 |
| CZRB2250 | 250 | 5 | 5000 | 9000 | 0.25 | 0.5 | 190 | 1.2 |
| CZRB2260 | 260 | 5 | 5000 | 9000 | 0.25 | 0.5 | 195 | 1.2 |
| CZRB2270 | 270 | 5 | 5000 | 9000 | 0.25 | 0.5 | 200 | 1.2 |
| CZRB2280 | 280 | 5 | 5000 | 9000 | 0.25 | 0.5 | 210 | 1.2 |
| CZRB2290 | 290 | 5 | 5000 | 9000 | 0.25 | 0.5 | 215 | 1.2 |
| CZRB2300 | 300 | 5 | 5000 | 9000 | 0.25 | 0.5 | 220 | 1.2 |
| CZRB2310 | 310 | 5 | 5000 | 9500 | 0.25 | 0.5 | 225 | 1.2 |
| CZRB2320 | 320 | 5 | 5000 | 9500 | 0.25 | 0.5 | 233 | 1.2 |
| CZRB2330 | 330 | 5 | 5000 | 9500 | 0.25 | 0.5 | 240 | 1.2 |
| CZRB2340 | 340 | 5 | 5000 | 9500 | 0.25 | 0.5 | 250 | 1.2 |
| CZRB2350 | 350 | 5 | 5000 | 9500 | 0.25 | 0.5 | 260 | 1.2 |

Note:

1. For 10% Tolerance on Zener Voltage, Specify No Suffix.

2. T_A = 25°C unless otherwise specified. Measurements made at Thermal Equilibrium.

Rating and Characteristic Curves (CZRB2110 Thru CZRB2350)

FIG. 1 - MAXIMUM CONTINUOUS POWER DISSIPATION

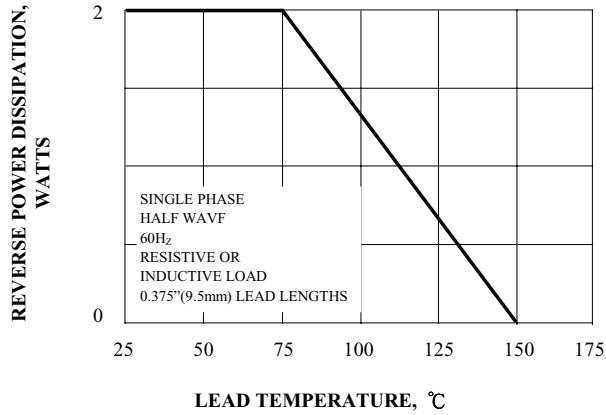


FIG. 2 - ZENER VOLTAGE VERSUS ZENER CURRENT

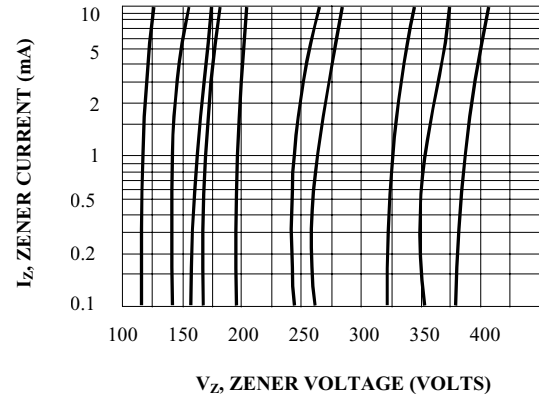


FIG. 3 - TYPICAL INSTANTANEOUS FORWARD CHARACTERISTICS

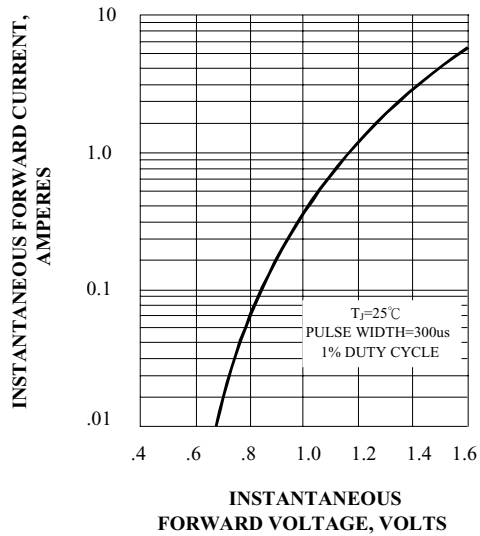


FIG. 4 - TYPICAL REVERSE CHARACTERISTICS

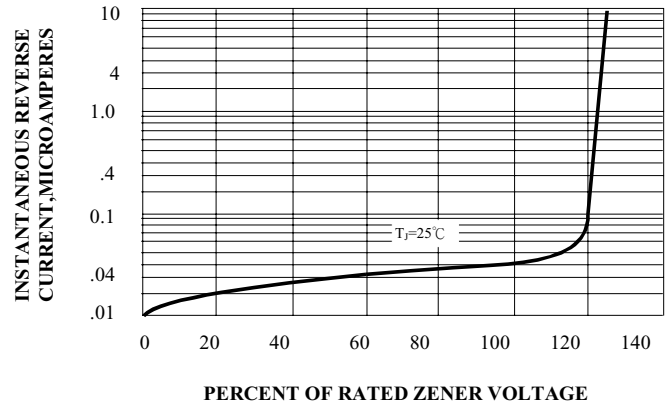


FIG. 5 - TYPICAL TEMPERATURE COEFFICIENTS

