

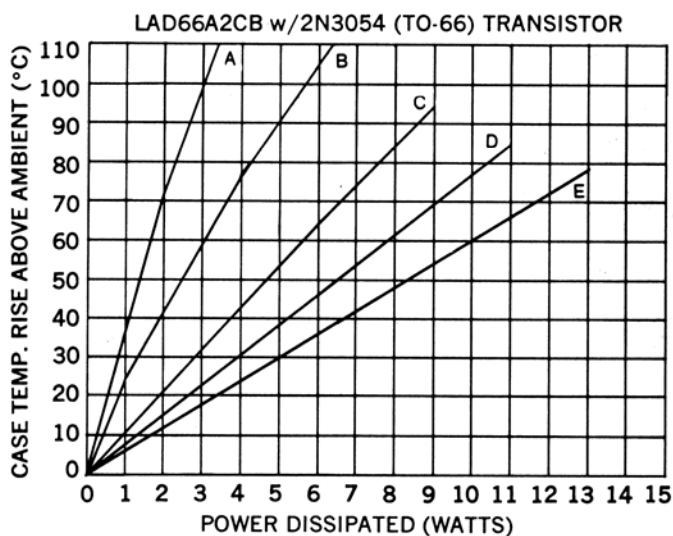
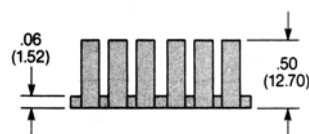
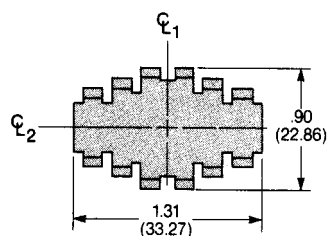
### METAL CASE, CASE-MOUNTED SEMICONDUCTORS

Part Number Series LA-A2

Natural Conv. ( $^{\circ}\text{C}/\text{W}$ ): 19.7

Forced Air ( $^{\circ}\text{C}/\text{W}$ ): 6.4

Mounting Envelope: 1.31" x .90" x .25"



#### DESCRIPTION OF CURVES

- A. N.C. Horiz. Device Only Mounted to G-10.
- B. N.C Horiz. & Vert. With Dissipator.
- C. 200 FPM w/Diss.
- D. 500 FPM w/Diss.
- E. 1000 FPM w/Diss.

- Thermal Resistance Case to Sink is 0.5-0.7  $^{\circ}\text{C}/\text{W}$  w/Joint Compound.
- Derate 0.4  $^{\circ}\text{C}/\text{watt}$  for unplated part in natural convection only.

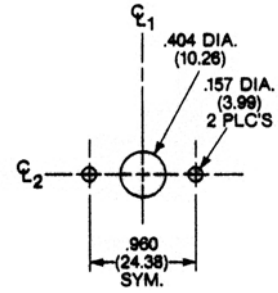
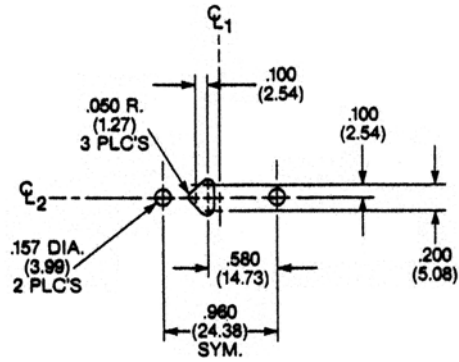
### Ordering Information

CTS IERC PART NO.			Semiconductor Accommodated	Hole patt. ref. no.	Max. Weight (Grams)
Unplated	Comm'l. Black Anodize	Mil. Black Anodize			
LA000A2U	LA000A2CB	LA000A2B	Undrilled	--	4.6
LAD66A2U	LAD66A2CB	LAD66A2B	TO-66	1 (see below)	4.6
LAIC66A2U	LAIC66A2CB	LAIC66A2B	TO-66 IC	7 (see below)	4.6

# **HOLE PATTERNS**

1. Hole Pattern no. 248 accommodates TO-66s. Available in LA-A, LA-B and LB series heat dissipators only.

7. Hole pattern no. 191 accommodates To-66 lcs. Available in LA-A, LA-B, and LB series heat dissipators only.



## **CTS IERC, Heat Sinks and Thermal Management Solutions**

413 North Moss Street, Burbank, California 91502

Tel: (818) 842-7277

Fax: (818) 848-8872

Rev. 08-29-03