

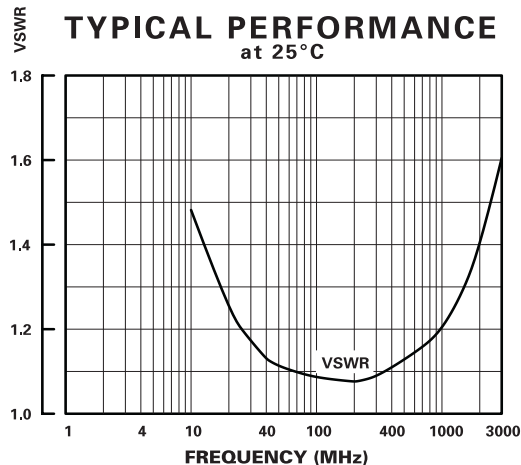
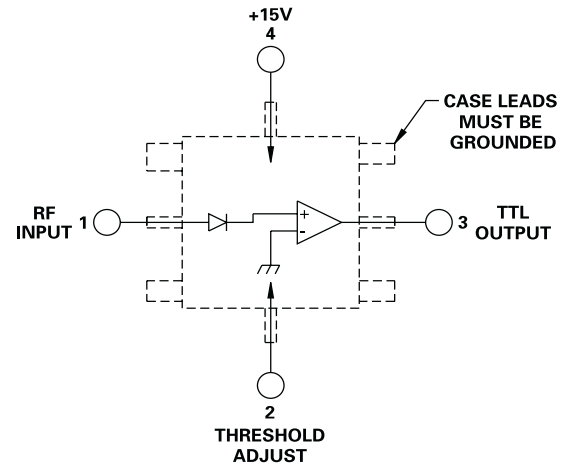
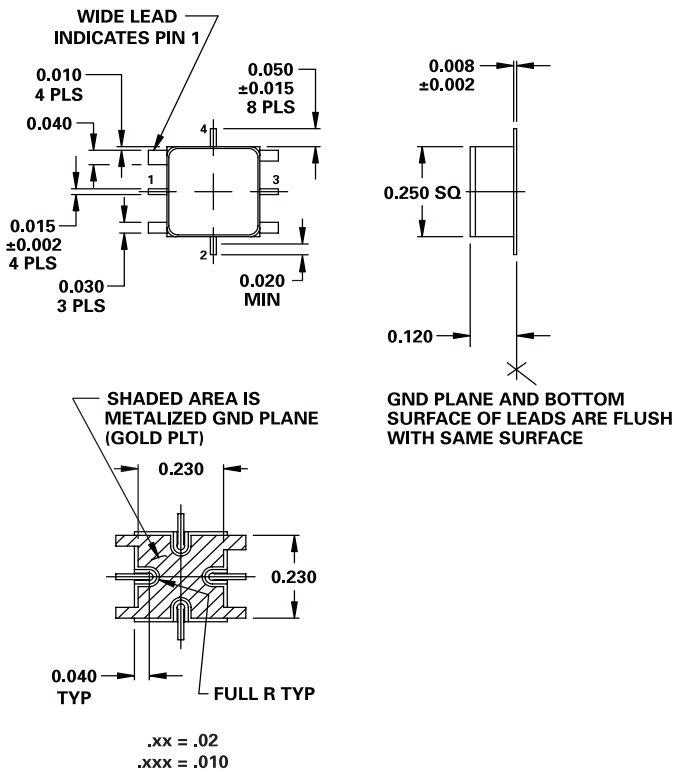
MODEL NUMBER DTD05080

Threshold Detector

FEATURES

- 400-450
- 1.0 dB Hysteresis
- Input / Output Operating Range
 ± 10 dB
- Surface Mount Package

TD



GUARANTEED PERFORMANCE

| Parameter | Min | Typ | Max | Units | Conditions |
|-----------------------|--------|----------|-----------|-----------|--|
| Operating Frequency | 400 | | 450 | MHz | |
| Dynamic Range | -10 | | +10 | dBm | |
| Hysteresis | | 1.0 | 1.2 | dB | |
| Temperature Stability | | ± 15 | ± 0.5 | dB | |
| Input Flatness | | ± 35 | ± 0.5 | dB | |
| Transition Time | | 2.3 | 3 | μ Sec | 90% / 10% or 10% / 90% RF |
| Input VSWR | | 1.12/1 | 1.5/1 | | |
| Output Current | Source | 3 | 8.6 | mA | Output Short Circuit Current VOL = +0.7 V |
| | Sink | 2 | 24 | mA | |
| DC Current | | 11 | 15 | mA | +15 V |
| Operating Temperature | 0 | +25 | +60 | °C | TA |



DAICO Industries

310.507.3242 • FAX 310.507.5701 • www.daico.com