



DC COMPONENTS CO., LTD.

RECTIFIER SPECIALISTS

**KBJ10A
THRU
KBJ10M**

TECHNICAL SPECIFICATIONS OF SINGLE-PHASE SILICON BRIDGE RECTIFIER

VOLTAGE RANGE - 50 to 1000 Volts

CURRENT - 10 Amperes

FEATURES

- * Ideal for printed circuit board
- * Surge overload rating: 200 Amperes peak

MECHANICAL DATA

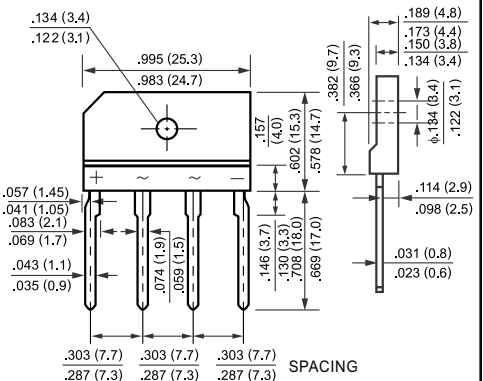
- * Case: Molded plastic
- * Epoxy: UL 94V-0 rate flame retardant
- * Terminals: MIL-STD-202E, Method 208 guaranteed
- * Polarity: Symbols molded or marked on body
- * Mounting position: Any
- * Weight: 4.6 grams

MAXIMUM RATINGS AND ELECTRICAL CHARACTERISTICS

Ratings at 25°C ambient temperature unless otherwise specified.
Single phase, half wave, 60 Hz, resistive or inductive load.
For capacitive load, derate current by 20%.



KBJ



Dimensions in inches and (millimeters)

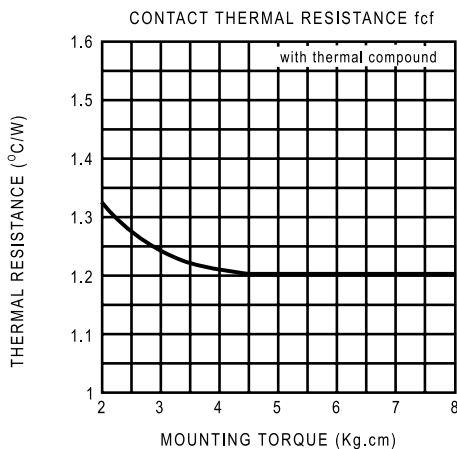
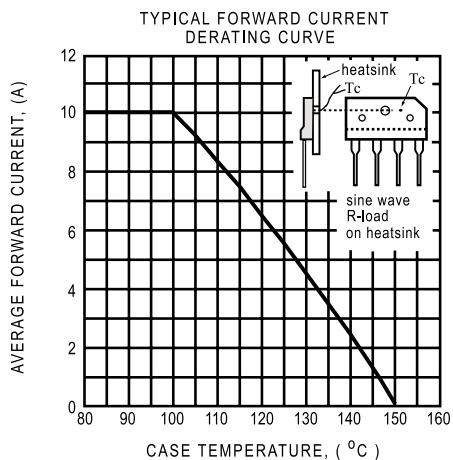
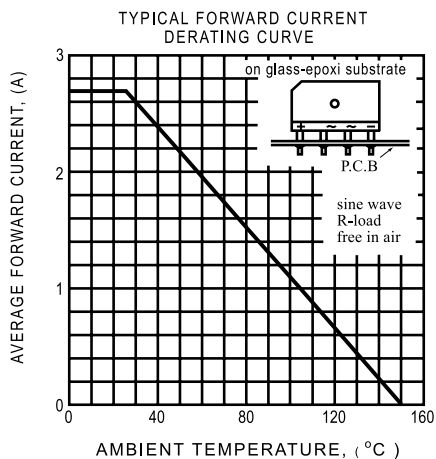
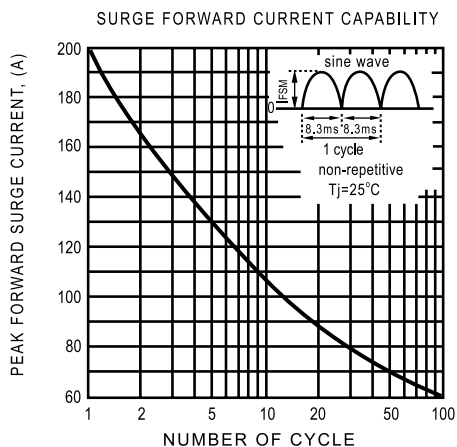
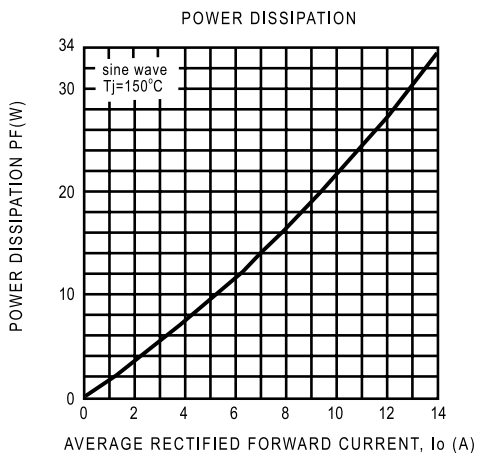
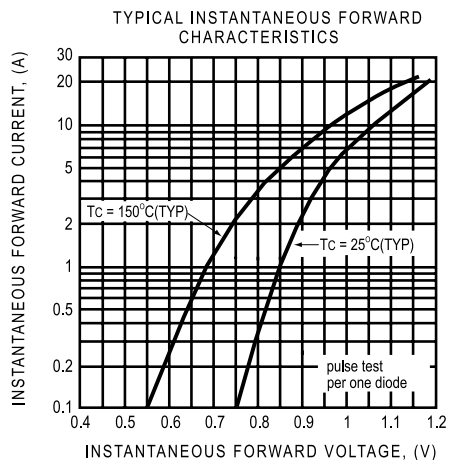
		SYMBOL	KBJ10A	KBJ10B	KBJ10D	KBJ10G	KBJ10J	KBJ10K	KBJ10M	UNITS
Maximum Recurrent Peak Reverse Voltage		VRRM	50	100	200	400	600	800	1000	Volts
Maximum RMS Bridge Input Voltage		VRMS	35	70	140	280	420	560	700	Volts
Maximum DC Blocking Voltage		VDC	50	100	200	400	600	800	1000	Volts
Maximum Average Forward Output Current at Tc = 100° C		Io	10							Amps
Peak Forward Surge Current 8.3 ms single half sine-wave superimposed on rated load (JEDEC Method)		IFSM	200							Amps
Maximum Forward Voltage Drop per element at 5.0A DC		VF	1.0							Volts
Maximum DC Reverse Current at Rated DC Blocking Voltage per element	@TA = 25°C	IR	10							uAmps
	@TA = 100°C		500							
I²t Rating for Fusing (t<8.3ms)		I²t	166							A²Sec
Typical Junction Capacitance (Note1)		CJ	40							pF
Typical Thermal Resistance (Note 2)		RθJA	18							°C/W
Operating Temperature Range		TJ	-55 to + 150							°C
Storage Temperature Range		TSTG	-55 to + 150							°C

NOTES : 1. Measured at 1 MHz and applied reverse voltage of 4.0 volts

2. Thermal Resistance from Junction to Case per element Unit mounted on 300x300x1.6mm Aluminum plate heat-sink.

RATING AND CHARACTERISTIC CURVES

(KBJ10A THRU KBJ10M)



DC COMPONENTS CO., LTD.