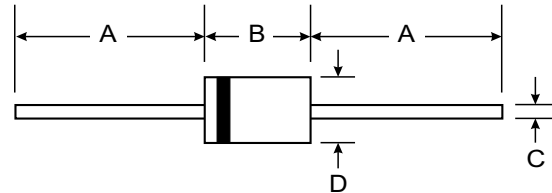


**INACTIVE, NOT
FOR NEW DESIGN,
USE 1N5391G - 1N5399G**

Features

- Glass Passivated Die Construction
- Diffused Junction
- High Current Capability and Low Forward Voltage Drop
- Surge Overload Rating to 50A Peak
- Low Reverse Leakage Current
- Plastic Material - UL Flammability Classification 94V-0



Mechanical Data

- Case: Molded Plastic
- Terminals: Plated Leads Solderable per MIL-STD-202, Method 208
- Polarity: Cathode Band
- Weight: 0.4 grams (approx)
- Mounting Position: Any
- Marking: Type Number

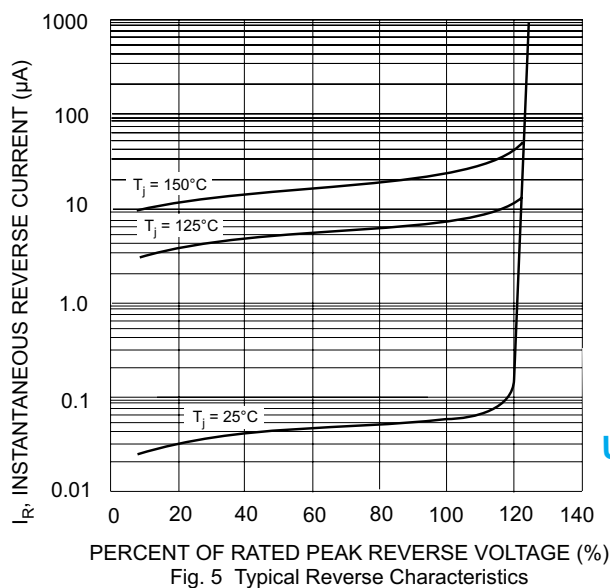
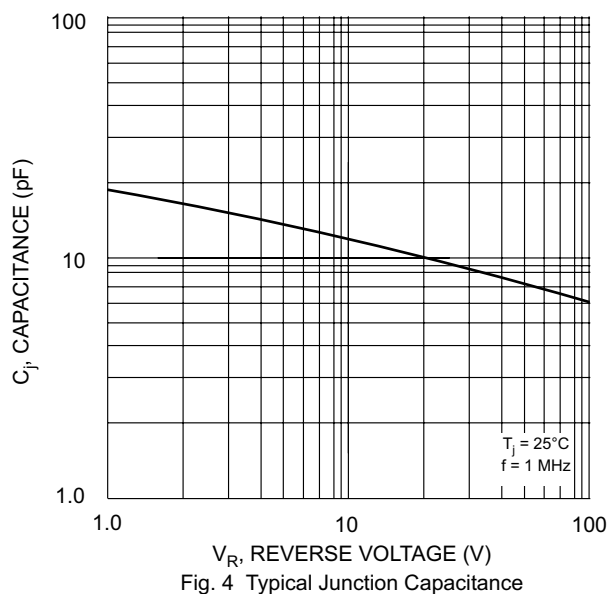
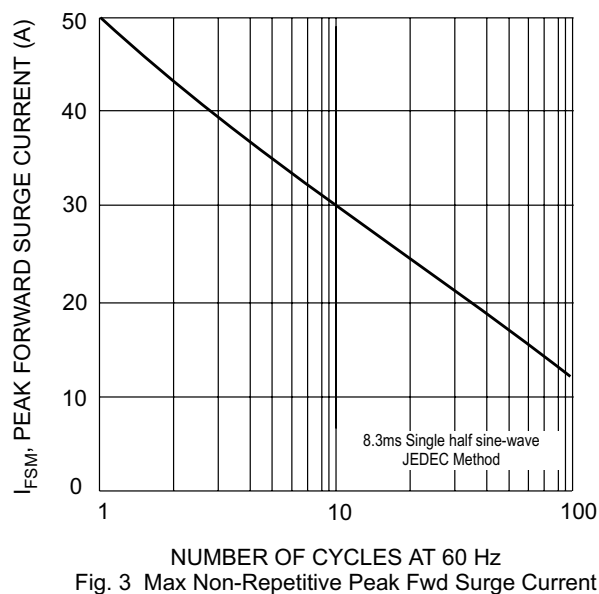
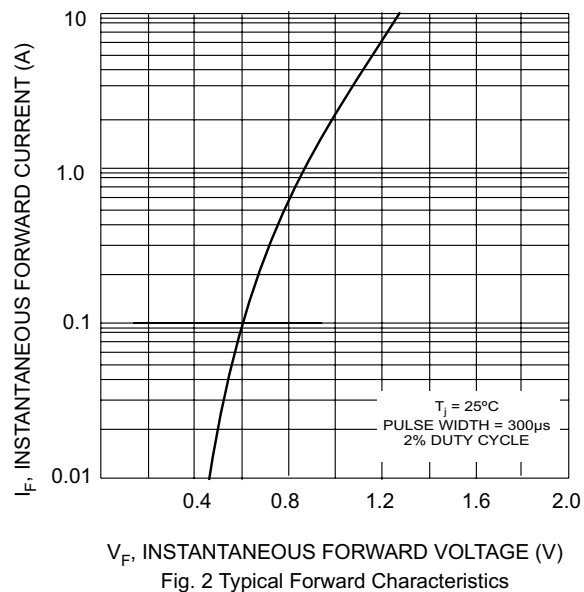
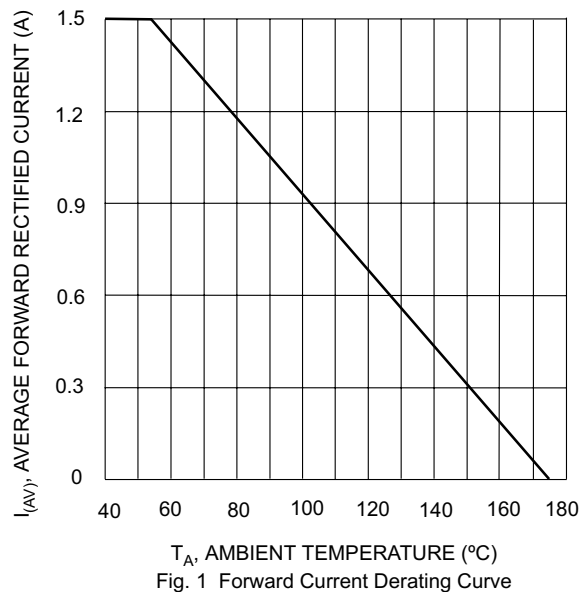
DO-15		
Dim	Min	Max
A	25.40	—
B	5.50	7.62
C	0.686	0.889
D	2.60	3.6
All Dimensions in mm		

Maximum Ratings and Electrical Characteristics @ T_A = 25°C unless otherwise specified

Single phase, half wave, 60Hz, resistive or inductive load.
For capacitive load, derate current by 20%.

Characteristic	Symbol	LT15 01G	LT15 02G	LT15 03G	LT15 04G	LT15 05G	LT15 06G	LT15 07G	Unit
Peak Repetitive Reverse Voltage	V _{RRM}	50	100	200	400	600	800	1000	V
Working Peak Reverse Voltage	V _{RWM}								
DC Blocking Voltage	V _R								
RMS Reverse Voltage	V _{R(RMS)}	35	70	140	280	420	560	700	V
Average Rectified Output Current (Note 1) @ T _A = 55°C	I _O	1.5							A
Non-Repetitive Peak Forward Surge Current 8.3ms single half sine-wave superimposed on rated load (JEDEC Method)	I _{FSM}	50							A
Forward Voltage @ I _F = 1.5A	V _{FM}	1.1							V
Peak Reverse Current @ T _A = 25°C at Rated DC Blocking Voltage @ T _A = 100°C	I _{RM}	5.0 200							μA
I ² t Rating for Fusing (t < 8.3ms)	I ² t	10.4							A ² s
Typical Junction Capacitance (Note 2)	C _j	15							pF
Typical Thermal Resistance Junction to Ambient	R _{θJA}	80							K/W
Operating and Storage Temperature Range	T _j , T _{STG}	-65 to +175							°C

Notes: 1. Valid provided that leads are kept at ambient temperature at a distance of 9.5mm from the case.
2. Measured at 1.0 MHz and applied reverse voltage of 4.0V DC.



**INACTIVE, NOT
FOR NEW DESIGN,
USE 1N5391G - 1N5399G**