

DIOTEC ELECTRONICS CORP.  
18020 Hobart Blvd., Unit B  
Gardena, CA 90248 U.S.A  
Tel.: (310) 767-1052 Fax: (310) 767-7958

Data Sheet No. BFSB-200-1B

## 2 AMP FAST RECOVERY BRIDGE RECTIFIERS

### FEATURES

- PRV Ratings from 50 to 1000 Volts
- Surge overload rating to 50 Amps peak
- Reliable low cost molded plastic construction
- Ideal for printed circuit board applications
- Fast switching for high efficiency

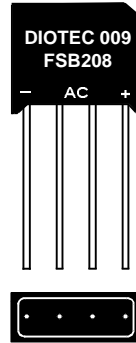
- **UL RECOGNIZED - FILE #E124962**

### MECHANICAL DATA

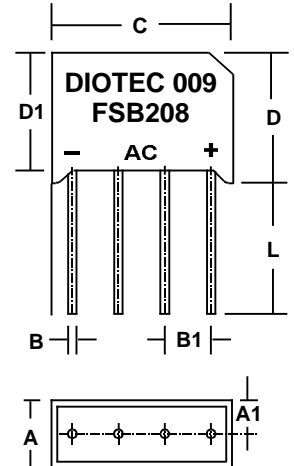
- Case: Molded plastic, U/L Flammability Rating 94V-0
- Terminals: Rectangular pins
- Soldering: Per MIL-STD 202 Method 208 guaranteed
- Polarity: Marked on case
- Mounting Position: Any
- Weight: 0.1 Ounces (2.8 Grams)

### MECHANICAL SPECIFICATION

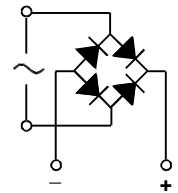
#### ACTUAL SIZE OF SB2 PACKAGE



#### SERIES FSB200 - FSB210



SYM	MILLIMETERS		INCHES	
	MIN	MAX	MIN	MAX
A	5.99	7.01	0.236	0.276
A1	2.99	3.51	0.118	0.138
B	0.71	0.89	0.028	0.035
B1	3.55	4.00	0.140	0.160
C	16.0	18.0	0.63	0.71
D	14.0	15.0	0.55	0.59
D1	13.2	13.7	0.52	0.54
L	12.7	n/a	0.50	n/a



### MAXIMUM RATINGS & ELECTRICAL CHARACTERISTICS

Ratings at 25 °C ambient temperature unless otherwise specified.  
Single phase, half wave, 60Hz, resistive or inductive load.  
For capacitive loads, derate current by 20%.

PARAMETER (TEST CONDITIONS)	SYMBOL	RATINGS							UNITS
Series Number		FSB 200	FSB 201	FSB 202	FSB 204	FSB 206	FSB 208	FSB 210	
Maximum DC Blocking Voltage	V <sub>RM</sub>	50	100	200	400	600	800	1000	VOLTS
Maximum RMS Voltage	V <sub>RMS</sub>	35	70	140	280	420	560	700	
Maximum Peak Recurrent Reverse Voltage	V <sub>RRM</sub>	50	100	200	400	600	800	1000	
Average Forward Rectified Current @ T <sub>A</sub> = 55 °C	I <sub>O</sub>	2							AMPS
Peak Forward Surge Current (8.3mS single half sine wave superimposed on rated load)	I <sub>FSM</sub>	50							
Maximum Forward Voltage at 1 Amp DC	V <sub>FM</sub>	1							VOLTS
Maximum Average DC Reverse Current @ T <sub>A</sub> = 25 °C At Rated DC Blocking Voltage @ T <sub>A</sub> = 125 °C	I <sub>RM</sub>	10 500							μA
Maximum Reverse Recovery Time (Note 1) @ T <sub>J</sub> = 25 °C	T <sub>RR</sub>	200			300		500		nS
Maximum Thermal Resistance, Junction to Ambient (Note 2)	R <sub>θJA</sub>	30							°C/W
Junction Operating and Storage Temperature Range	T <sub>J</sub> , T <sub>STG</sub>	-55 to +150							°C

NOTES: (1) T<sub>J</sub> = 25°C, I<sub>F</sub> = 0.5A, I<sub>R</sub> = 1A, I<sub>RR</sub> = 0.25A  
(2) Bridge mounted on PC Board with 0.47" sq. (12mm sq.) copper pads

3.01025b