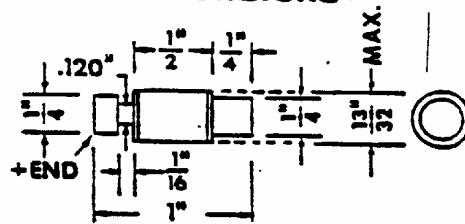


Dimensions




F22

JEDEC NO.	I_o @100°C (AMPS)	VRRM (VOLTS)	IFSM (AMPS)	V_f @ I_f (VOLTS)	I_f (AMPS)	OUTLINE
1N1081	.5	100	30	1.5	.5	F22
1N1082	.5	200	30	1.5	.5	F22
1N1083	.5	300	30	1.5	.5	F22
1N1084	.5	400	30	1.5	.5	F22
1N1085	1.5	100	60	1.5	1.5	F22H
1N1086	1.5	300	60	1.5	1.5	F22H
1N1081A	.75	100	35	1.0	1.0	F22
1N1082A	.75	200	35	1.0	1.0	F22
1N1083A	.75	300	35	1.0	1.0	F22
1N1084A	.75	400	35	1.0	1.0	F22

*CAN BE SUPPLIED IN HIGHER VOLTAGE

9000-4147

REV.	DESCRIPTION	BY	DATE
EDAL INDUSTRIES INC. EAST HAVEN, CONN. 06512		DRAWN DV	APP  DATE 6/24/91
TITLE SILICON CARTRIDGE (FUSE TYPE) RECTIFIERS		TOLERANCES UNLESS OTHERWISE NOTED FRACTIONS \pm DECIMALS \pm	
		DWG. NO. 1N1081-1N1086 1N1081A-1N1084A	