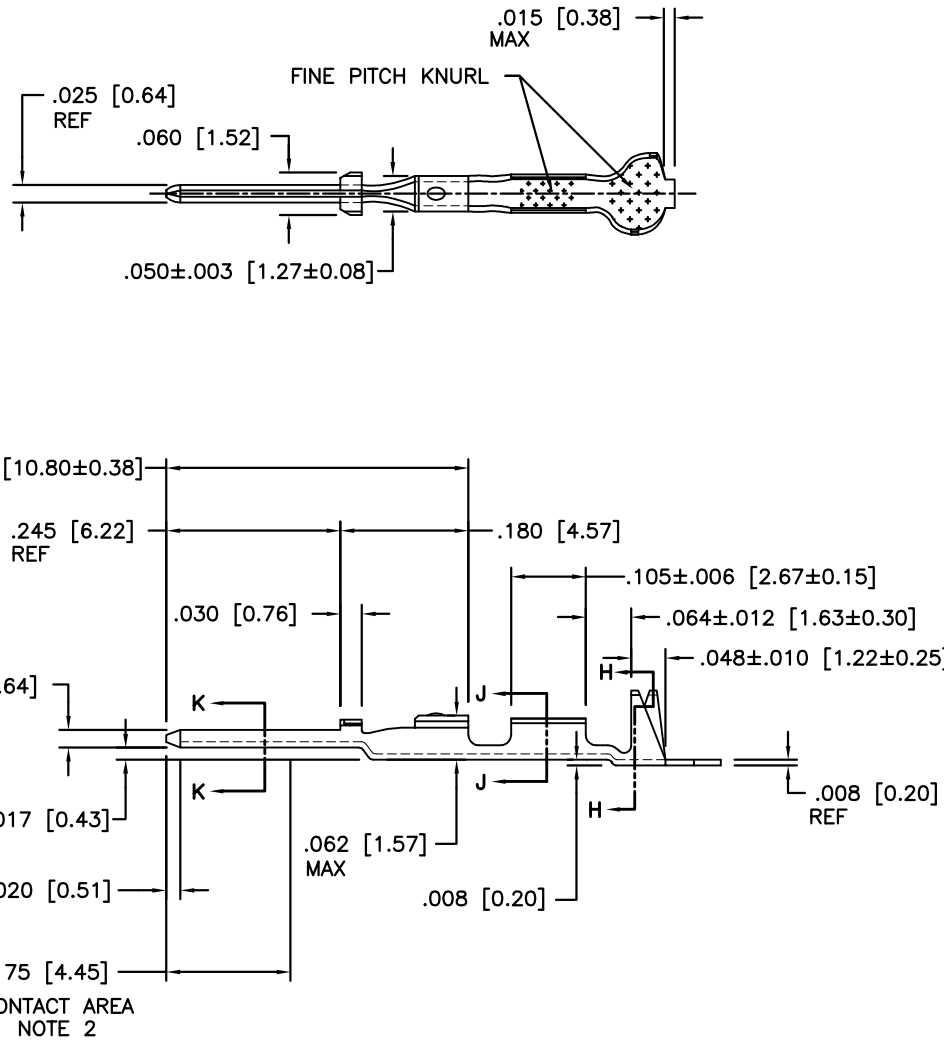



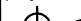
Tous droits strictement reserves. Reproduction ou communication a des tiers
Interdite sous quelque forme que ce soit sans autorisation ecrite du proprietaire.
Propriete de c FCI. Droits de reproduction FCI.

FCI

All rights strictly reserved. Reproduction or issue to third parties in any
form whatever is not permitted without written authority from the proprietor.
Property of FCI. Copyright FCI.

PRODUCT NUMBER
SEE SHEET 2



mat'l. code NOTE 1				tolerances unless otherwise specified			CUSTOMER COPY		<div> FCI www.fciconnect.com</div>	
ltr	ecn no	dr	date	linear	.XX ±.01/.X±.3		<div></div>	title		
F	V41701	LSS	11/22/94		.XXX ±.005/.XX±.13			C.T.W. MALE PIN LOOSE PIECE		
G	V05-0254	HTB	3/18/05		.XXXX ±.0020/.XXX±.051					
					angles 0° ±2°					
				dr	L. SANDERS	11/28/94	INCH/MM		product family PV TERMINALS	
				enrg	T. HANNA	11/28/94	scale		size	dwg no
				chr	T. BREWBAKER	11/28/94	4:1		A	48115
				appd	T. HANNA	11/28/94				213
										sheet
										1 of 2
sheet	revision	G	G							
index	sheet	1	2							

cage code
22526

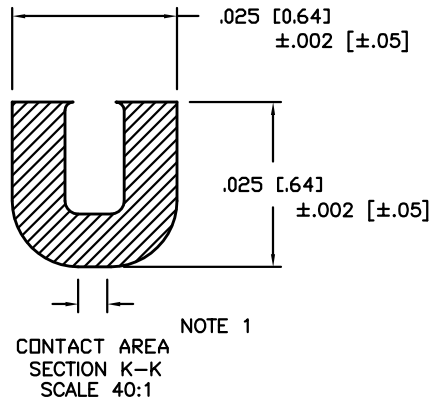
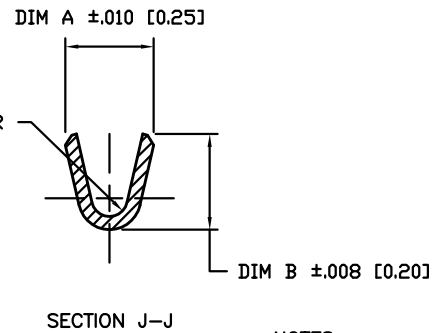
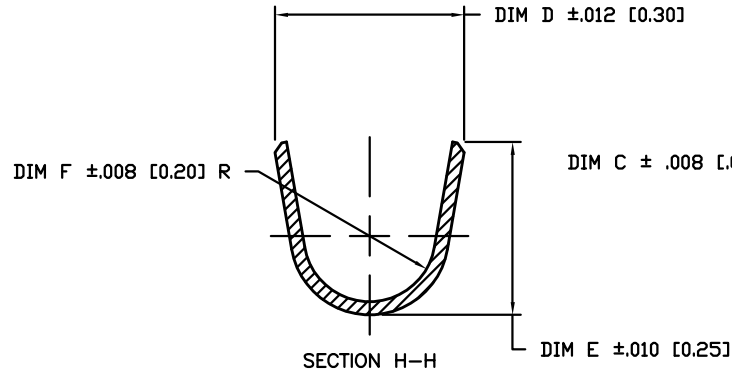
ACAD

PDM: Rev:G

STATUS:Released

Printed: Mar 23, 2005

PRODUCT NUMBER NOTE 5	AWG	DIM A	DIM B	DIM C	DIM D	DIM E	DIM F
48115-000	28-32	.054 [1.37]	.058 [1.47]	.011 [0.28]	.115 [2.92]	.105 [2.67]	.040 [1.02]
48115-000LF	28-32	.054 [1.37]	.058 [1.47]	.011 [0.28]	.115 [2.92]	.105 [2.67]	.040 [1.02]
48116-000	22-26	.070 [1.78]	.065 [1.65]	.017 [0.43]	.139 [3.53]	.120 [3.05]	.050 [1.27]
48116-000LF	22-26	.070 [1.78]	.065 [1.65]	.017 [0.43]	.139 [3.53]	.120 [3.05]	.050 [1.27]
48117-000	18-20	.104 [2.64]	.104 [2.64]	.021 [0.53]	.139 [3.53]	.120 [3.05]	.050 [1.27]
48117-000LF	18-20	.104 [2.64]	.104 [2.64]	.021 [0.53]	.139 [3.53]	.120 [3.05]	.050 [1.27]



NOTES:

- ① MATERIAL: 3/4 HD. BRASS ALLOY 260.
- ② PLATING: ELECTRODEPOSITED GOLD 50u"/1.27u IN CONTACT AREA, REMAINDER GOLD FLASH. UNDERPLATE 50u"/1.27u NICKEL.
3. TERMINAL MAY BE USED WITH MINI LATCH HOUSING.
4. APPLICABLE SPECIFICATION:
A. BUS-12-098 PRODUCT SPECIFICATION.
B. TA-211 CRIMP SPECIFICATION.
- ⑤ PART NUMBERS WITH AN LF SUFFIX MEET EUROPEAN UNION DIRECTIVES AND OTHER COUNTRY REGULATIONS AS DESCRIBED IN GS-22-008.
6. THIS PRODUCT IS NOT INTENDED TO BE EXPOSED TO MANUFACTURING SOLDER PROCESSES.

mat'l. code NOTE 1				tolerances unless otherwise specified		CUSTOMER COPY		A FCI www.fciconnect.com	
ltr	ecr no	dr	date	linear	.XX ±.01/.X±.3	projection INCH/MM	title C.T.W. MALE PIN LOOSE PIECE	product family PV TERMINALS	code 213
G					.XXX ±.005/.XX±.13				
					.XXX ±.0020/.XXX±.051				
				angles	0° ±2°	scale 10:1	A	48115	sheet 2 of 2
				dr	L. SANDERS 11/28/94				
				enr	T. HANNA 11/28/94				
				chr	T. BREWBAKER 11/28/94				
				appd	T. HANNA 11/28/94	scale 10:1	A	48115	sheet 2 of 2
sheet index	revision sheet								

cage code
22526

ACAD

PDM: Rev:G

STATUS:Released

Printed: Mar 23, 2005