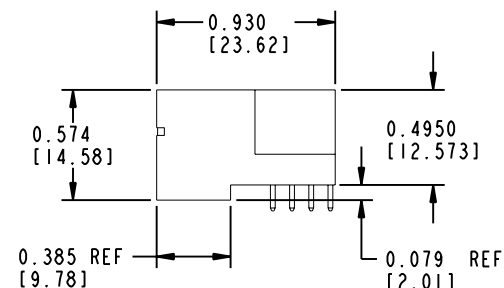
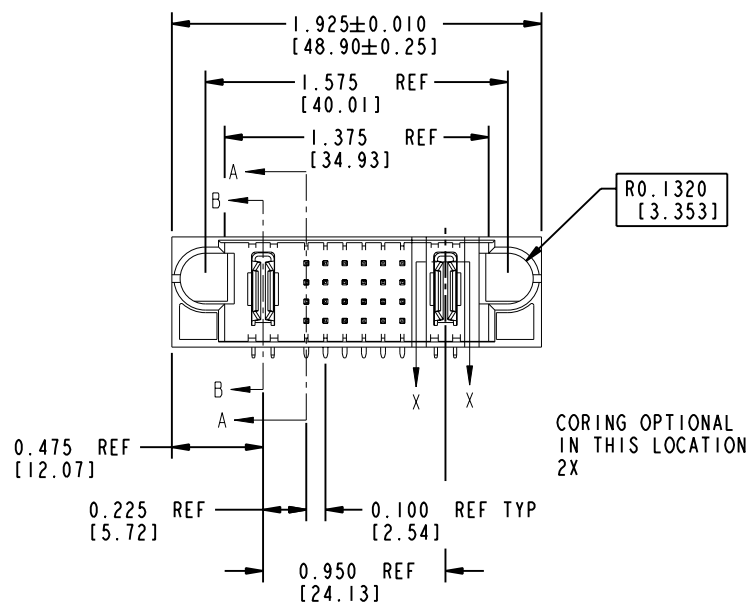
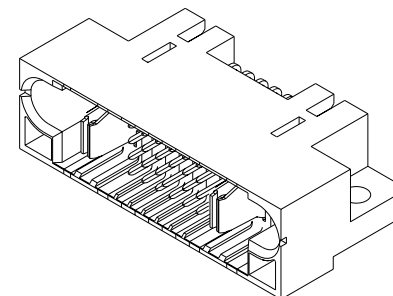
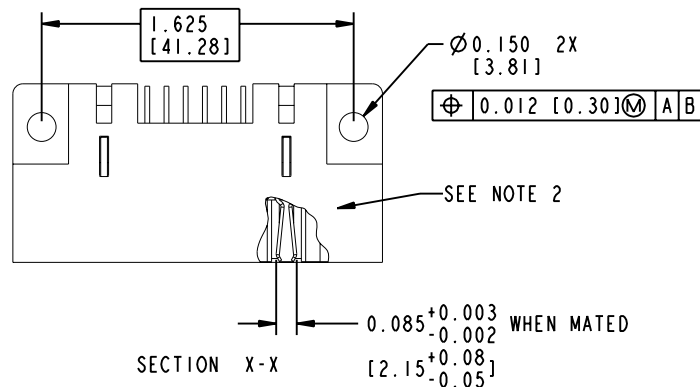


Tous droits strictement reserves. Reproduction ou communication a des tiers interdite sous quelque forme que ce soit sans autorisation écrite du propriétaire. Propriete de c FCI. Droits de reproduction FCI.





All rights strictly reserved. Reproduction or issue to third parties in any form whatever is not permitted without written authority from the proprietor. Property of FCI. Copyright FCI.

PRODUCT NUMBER
SEE SHEET 3



THIS FILE WAS ORIGINALLY CREATED IN THE PRO ENGINEER ENVIRONMENT AND ANY FUTURE REVISIONS TO THIS FILE MUST BE MADE IN THE PRO ENGINEER ENVIRONMENT

mat'l code SEE NOTE 1				tolerances unless otherwise specified				CUSTOMER COPY		 ELECTRONICS www.fciconnect.com		
ltr	ecn no.	dr	date	linear	.XX±.01/.X±.3				projection 	title IP + 24S + IP RIGHT ANGLE SOLDER HEADER		
K	DG05-0064	SW	3/30/05		.XXX±.005/.X±.13							
L	DG05-0435	SW	11/03/05		.XXXX±.0020/.XXX±.051							
				angles	0°±2°				INCH / MM scale 1:1	product family PWRBLADE		
				dr	C. BAROT	01-12-99				size A	dwg no 51415	
				enr	J. BROWN	01-12-99						
				chr	J. BROWN	01-12-99						
				appd	J. BROWN	01-12-99						
sheet index		revision sheet		L	L	L	L	L			code 213	
				1	2	3	4	5			1 OF 5	

form no. 7530-001-103

cage code
22526

PDM: Rev:L

STATUS: Released

Printed: Dec 13, 2005

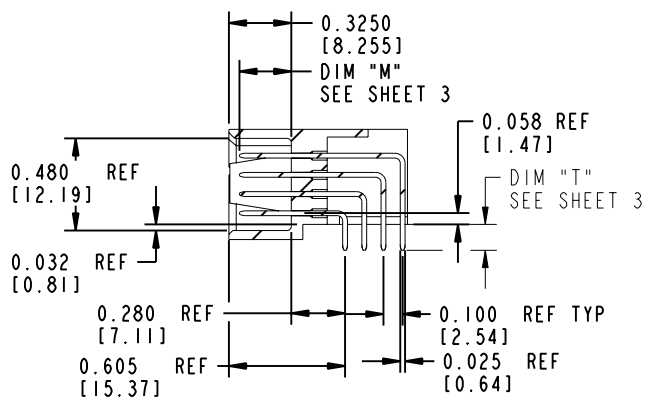
Tous droits strictement réservés. Reproduction ou communication a des tiers interdite sous quelque forme que ce soit sans autorisation écrite du propriétaire. Propriété de c FCI. Droits de reproduction FCI.



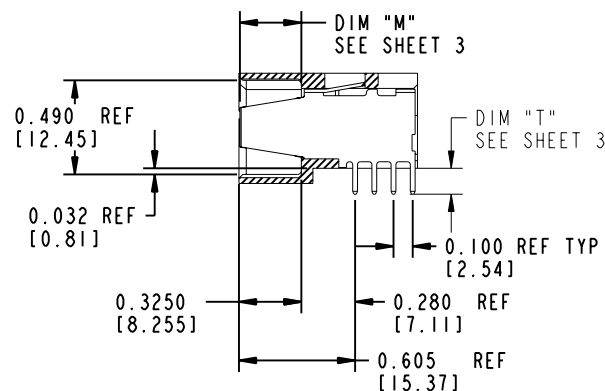
All rights strictly reserved. Reproduction or issue to third parties in any form whatever is not permitted without written authority from the proprietor. Property of FCI. Copyright FCI.

PRODUCT NUMBER

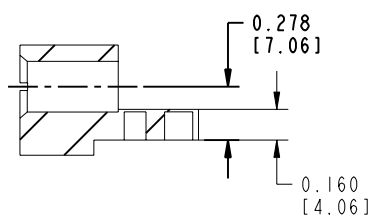
SEE SHEET 3




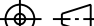

SECTION A-A
SCALE 1:1



SECTION B-B
SCALE 1:1



SECTION I-I

mat'l code				tolerances unless otherwise specified		CUSTOMER COPY		 ELECTRONICS www.fciconnect.com	
lfr	ecn no.	dr	date	linear	.XX±.01/.X±.3	projection 	title IP + 24S + IP RIGHT ANGLE SOLDER HEADER	product family PWRBLADE	code 213
L					.XXX±.005/.X±.13				
					XXXX±.0020/.XXX±.05				
				angles	0°±2°	INCH / MM 	size A	dwg no 51415	2
				dr	C. BAROT 01-12-99				
				enrg	J. BROWN 01-12-99				
				chr	J. BROWN 01-12-99	scale 1:1			
				appd	J. BROWN 01-12-99				
sheet index		revision sheet							

form no. 7530-001-103

PDM: Rev:L

STATUS:Released

Printed: Dec 13, 2005

Tous droits strictement reserves. Reproduction ou communication a des tiers interdite sous quelque forme que ce soit sans autorisation écrite du propriétaire. Propriete de c FCI. Droits de reproduction FCI.

All rights strictly reserved. Reproduction or issue to third parties in any form whatever is not permitted without written authority from the proprietor. Property of FCI. Copyright FCI.



PRODUCT NUMBER

SEE TABLE

ITEM NO.	QTY	DIM "M" MATING LENGTH ±.010		DIM "T" TAIL LENGTH ±.020		CONTACT TYPE
PA	2	N/A	[N/A]	0.135	[3.43]	POWER
F	1	0.220	[5.59]	0.135	[3.43]	SIGNAL
R	6	0.270	[6.86]	0.135	[3.43]	SIGNAL
S	5	0.270	[6.86]	0.135	[3.43]	SIGNAL
T	6	0.270	[6.86]	0.135	[3.43]	SIGNAL
U	6	0.270	[6.86]	0.135	[3.43]	SIGNAL

PRODUCT No.	ROWS	POWER		SIGNAL						POWER	
		E1	P1	1	2	3	4	5	6	P2	E2
51415-001-- NOTE (3)	D C B A		PA	UUUUUU	TTTTTT	SSSSSS	FFFF	SSSSSS	RRRRRR	PA	

ITEM NO.	QTY	DIM "M" MATING LENGTH ±.010		DIM "T" TAIL LENGTH ±.020		CONTACT TYPE
PA	2	N/A	[N/A]	0.135	[3.43]	POWER
E	6	0.220	[5.59]	0.135	[3.43]	SIGNAL
F	5	0.220	[5.59]	0.135	[3.43]	SIGNAL
G	6	0.220	[5.59]	0.135	[3.43]	SIGNAL
H	6	0.220	[5.59]	0.135	[3.43]	SIGNAL
S	1	0.270	[6.86]	0.135	[3.43]	SIGNAL

PRODUCT No.	ROWS	POWER		SIGNAL						POWER	
		E1	P1	1	2	3	4	5	6	P2	E2
51415-002-- NOTE (3)	D C B A		PA	HHHHHH	GGGGGG	FFFF	SSSS	FFFF	EEEEEE	PA	

ITEM NO.	QTY	DIM "M" MATING LENGTH ±.010		DIM "T" TAIL LENGTH ±.020		CONTACT TYPE
PA	2	N/A	[N/A]	0.135	[3.43]	POWER
F	1	0.220	[5.59]	0.135	[3.43]	SIGNAL
R	6	0.270	[6.86]	0.135	[3.43]	SIGNAL
S	5	0.270	[6.86]	0.135	[3.43]	SIGNAL
T	6	0.270	[6.86]	0.135	[3.43]	SIGNAL
U	6	0.270	[6.86]	0.135	[3.43]	SIGNAL

PRODUCT No.	ROWS	POWER		SIGNAL						POWER	
		E1	P1	1	2	3	4	5	6	P2	E2
51415-003-- NOTE (3)	D C B A		PA	UUUUUU	TTTTTT	SSSSSS	FFFF	SSSSSS	RRRRRR	PA	

mat'l code SEE NOTE 1				tolerances unless otherwise specified		CUSTOMER COPY		ELECTRONICS www.fciconnect.com	
ltr	ecn no.	dr	date	linear	.XX±.01/.X±.3		projection 	title IP + 24S + IP	
L					.XXX±.005/.X±.13			RIGHT ANGLE SOLDER HEADER	
				angles	XXX±.0020/.XXX±.05		 0°±2°	product family PWRBLADE	
								code 213	
				dr	C. BAROT	01-12-99	INCH / MM scale 1:1	product size A	
				enr	J. BROWN	01-12-99		dwg no 51415	
				chr	J. BROWN	01-12-99			
				appd	J. BROWN	01-12-99			
sheet index	revision sheet								

form no. 7530-001-103

cage code
22526

PDM: Rev:L

STATUS:Released

Printed: Dec 13, 2005

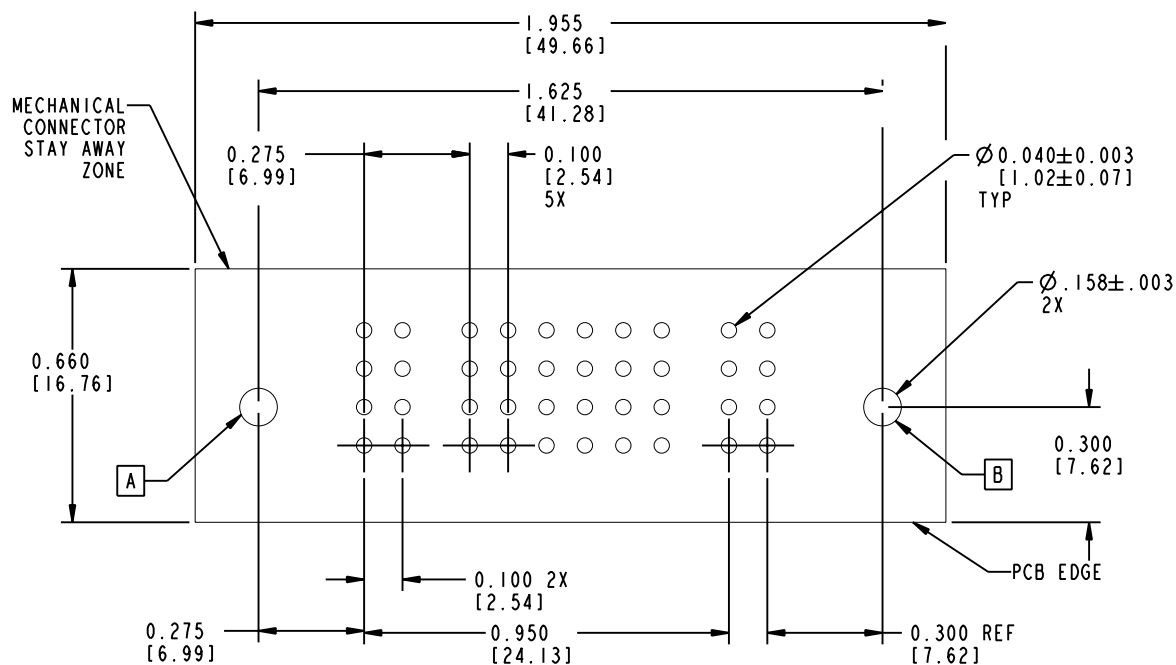
Tous droits strictement reserves. Reproduction ou communication a des tiers interdite sous quelque forme que ce soit sans autorisation écrite du propriétaire. Propriete de c FCI. Droits de reproduction FCI.



All rights strictly reserved. Reproduction or issue to third parties in any form whatever is not permitted without written authority from the proprietor. Property of FCI. Copyright FCI.

PRODUCT NUMBER

51415-00X--
NOTE ③



SCALE 2:1

RECOMMENDED PCB LAYOUT

THIS FILE WAS ORIGINALLY CREATED IN THE PRO ENGINEER ENVIRONMENT AND ANY FUTURE REVISIONS TO THIS FILE MUST BE MADE IN THE PRO ENGINEER ENVIRONMENT

mat'l code				SEE NOTES		tolerances unless otherwise specified		CUSTOMER		FCI ELECTRONICS	
ltr	ecn no.	dr	date	linear		.XX±.01/.X±.3		COPY		www.fciconnect.com	
L						.XXX±.005/.XX±.13		projection		title	
						.XXX±.002/.XX±.051		0°±2°		IP + 24S + IP	
				angles		0°±2°		INCH/MM		RIGHT ANGLE SOLDER HEADER	
				dr	C. BAROT	01-12-99		product family		PWRBLADE	code
				enr	J. BROWN	01-12-99		size		dwg no	213
				chr	J. BROWN	01-12-99		A		51415	
				appd	J. BROWN	01-12-99		scale		4	
sheet index		revision sheet									

form no. 7530-001-103

cage code 22526

PDM: Rev:L

STATUS: Released

Printed: Dec 13, 2005



PRODUCT NUMBER
51415-00X--
NOTE ③

NOTES:

1. DIMENSIONS AND TOLERANCES ARE IN ACCORDANCE WITH ASME Y14.5M, 1994 UNLESS OTHERWISE SPECIFIED.

CONNECTOR NOTES:

2. HOUSING MATERIAL: UL 94 V-0 GLASS FILLED HIGH-TEMP THERMOPLASTIC
POWER CONTACT MATERIAL: COPPER ALLOY
SIGNAL PIN MATERIAL: COPPER ALLOY
3. PLATING(51415-00X STAND FOR 51415-001 , 51415-002 AND 51415-003)
51415-00X Singal Pin:30u"/0.76um Au OVER 50u"/1.27um Ni ON THE CONTACT AREA.
AND 100u"/2.54um SnPb PLATING OVER 50u"/1.27um Ni ON THE TERMINATION SECTION.
Power Pin:30u"/0.76um Au OVER 50u"/1.27um Ni ON THE CONTACT AREA,
AND 100u"/2.54um SnPb PLATING OVER 50u"/1.27um Ni ON THE TERMINATION SECTION.

51415-00XLF Singal Pin:30u"/0.76um Au OVER 50u"/1.27um Ni ON THE CONTACT AREA.
AND 78u"/2.00um Sn PLATING OVER 50u"/1.27um Ni ON THE TERMINATION SECTION.
Power Pin:30u"/0.76um Au OVER 50u"/1.27um Ni ON THE CONTACT AREA,
AND 78u"/2.00um Sn PLATING OVER 50u"/1.27um Ni ON THE TERMINATION SECTION.

PART NUMBER 51415-00XLF MEETS EUROPEAN UNION DIRECTIVE AND OTHER COUNTRY REGULATIONS AS DESCRIBED IN GS-22-008.

THE HOUSING WILL WITHSTAND EXPOSURE TO 260° PEAK TEMPERATURE FOR 10 SECONDS IN A WAVE SOLDER APPLICATION WITH A CIRCUIT BOARD.

4. MANUFACTURER'S NAME, P/N, AND DATE CODE TO APPEAR ON THIS SURFACE.
5. PRODUCT SPECIFICATION GS-12-149.
APPLICATION SPECIFICATION BUS-20-067.

PCB NOTES:

6. ALL HOLE DIAMETERS ARE FINISHED HOLE SIZE.
7. MOUNTING HOLES, WHERE APPLICABLE, ARE UNPLATED.
8. $\varnothing .0453 \pm 0.0010$ [1.151 \pm 0.025] DRILLED HOLES PLATED WITH .0003 [0.008] MIN SnPb OVER .001 [0.03] TO .003 [0.08] Cu PLATING TO ACHIEVE $\varnothing .040 \pm .003$ [1.02 \pm .07] HOLE.
9. "DIM XXX" TO BE DETERMINED BY THE CUSTOMER.
10. CONNECTOR KEEP-OUT ZONE.

THIS FILE WAS ORIGINALLY CREATED IN THE PRO ENGINEER ENVIRONMENT AND ANY FUTURE REVISIONS TO THIS FILE MUST BE MADE IN THE PRO ENGINEER ENVIRONMENT

mat'l code				SEE NOTES		tolerances unless otherwise specified		CUSTOMER		ELECTRONICS www.fciconnect.com		
ltr	ecn no.	dr	date	line dr	.XX±.01/.XX±.3		COPY		projection INCH/MM scale 1:1	title IP + 24S + IP RIGHT ANGLE SOLDER HEADER		
L					.XXX±.005/.XX±.13					product family PWRBLADE		code 213
					.XXX±.002/.XXX±.051					size 51415		sheet 5
					angles 0°±2°							
				dr	C. BAROT	01-12-99						
				eng	J. BROWN	01-12-99						
				chr	J. BROWN	01-12-99						
				app	J. BROWN	01-12-99						
sheet index		revision sheet										