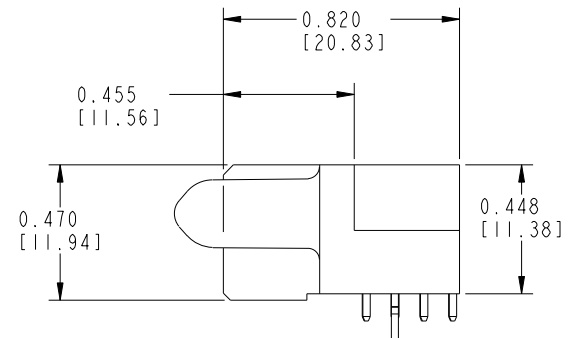
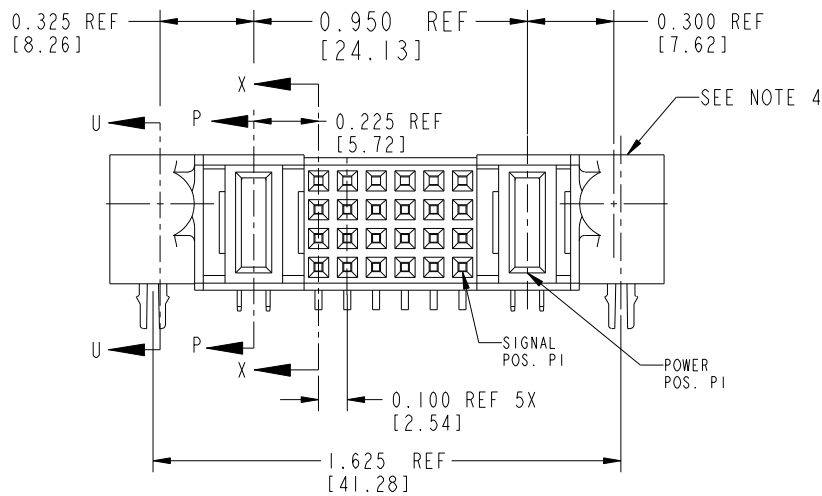
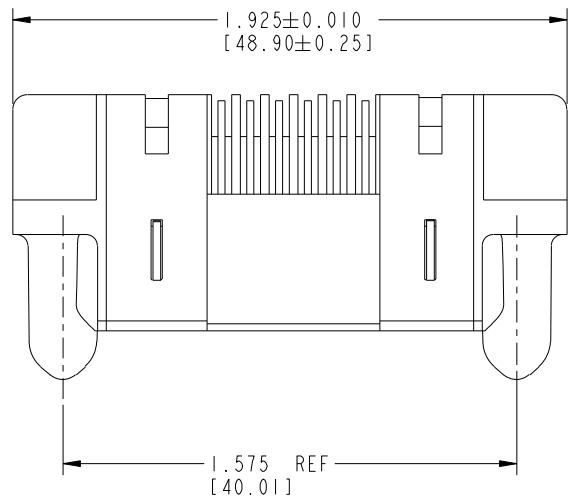


Tous droits strictement reserves. Reproduction ou communication a des tiers interdite sous quelque forme que ce soit sans autorisation écrite du propriétaire.
Propriete de c FCI. Droits de reproduction FCI.

All rights strictly reserved. Reproduction or issue to third parties in any form whatever is not permitted without written authority from the proprietor.
Property of FCI. Copyright FCI.

FCI

PRODUCT NUMBER
51416-00X-
NOTE ③



THIS FILE WAS ORIGINALLY CREATED IN THE PRO ENGINEER ENVIRONMENT AND ANY FUTURE REVISIONS TO THIS FILE MUST BE MADE IN THE PRO ENGINEER ENVIRONMENT

mat'l code				SEE NOTES		tolerances unless otherwise specified		CUSTOMER		A FCI www.fciconnect.com	
ltr	ecn no.	dr	date			.XX ±.01/.X ±.3		COPY		title	
A	V90563	CHB	02-18-99	linear		.XXX ±.005/.XX ±.13		projection		IP + 24S + IP	
B	V90919	SAR	04-14-99			.XXXX ±.0020/.XXX ±.051		INCH/MM		RIGHT ANGLE SOLDER RECEPT	
C	V94029	CHB	10-08-99	angles		0° ± 2°		scale		product family	code
D	V01376	EKK	06-08-00	dr	LEVEL 4	01-12-99		3:2		PwrBlade	213
E	DG05-0049	SW	03-17-05	enrg	J. BROWN	01-12-99				size	sheet
F	DG05-0230	LH	07-19-05	chr	J. BROWN	01-12-99				51416	1 of 5
				appd	J. BROWN	01-12-99				A	
sheet index		revision sheet		F	F	F	F				
				1	2	3	4				

Pro/E

PDM: Rev:F

STATUS: Released

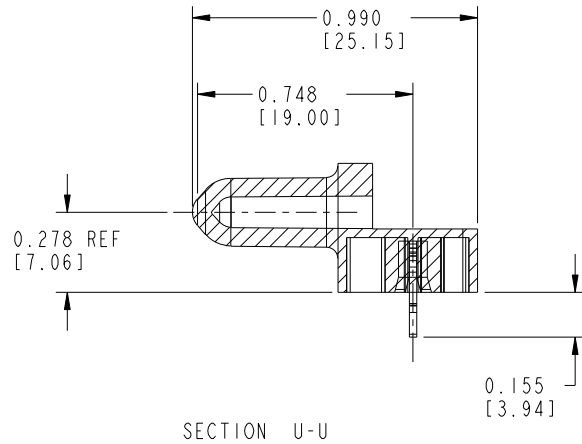
Printed: Dec 13, 2005

Tous droits strictement reserves. Reproduction ou communication a des tiers interdite sous quelque forme que ce soit sans autorisation écrite du propriétaire. Propriete de c FCI. Droits de reproduction FCI.

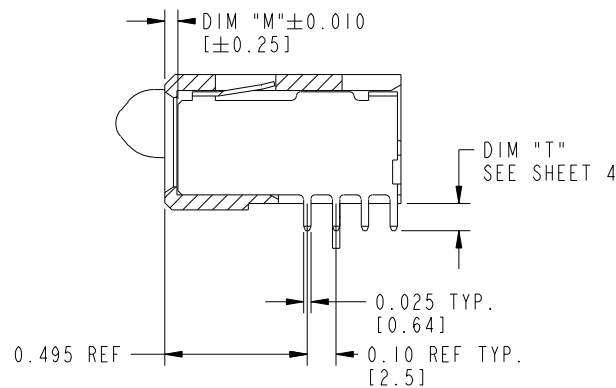
All rights strictly reserved. Reproduction or issue to third parties in any form whatever is not permitted without written authority from the proprietor. Property of FCI. Copyright FCI.

FCI

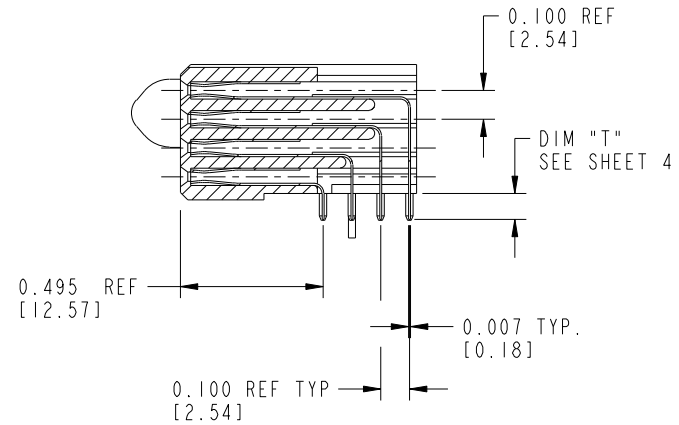
PRODUCT NUMBER
51416-00X ---
NOTE (3)



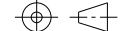

SECTION U-U



SECTION P-P



SECTION X-X

mat'l code				SEE NOTES		tolerances unless otherwise specified		CUSTOMER		<div><div>A</div><div>FCI</div><div>www.fciconnect.com</div></div>	
ltr	ecn no.	dr	date	linear	.XX ±.01/.X ±.3		projection 	COPY		title	
F					.XXX ±.005/.XX ±.13			IP + 24S + IP		RIGHT ANGLE SOLDER RECEPT	
					.XXXX ±.0020/.XXX ±.051						
				angles	0° ± 2°		INCH/MM 	product family		code	
				dr	LEVEL 4	01-12-99		PwrBlade		213	
				enrg	J. BROWN	01-12-99		size dwg no		sheet	
				chr	J. BROWN	01-12-99		scale		2	
				appd	J. BROWN	01-12-99	3:2	A	51416-001		
sheet index		revision sheet									

Pro/E

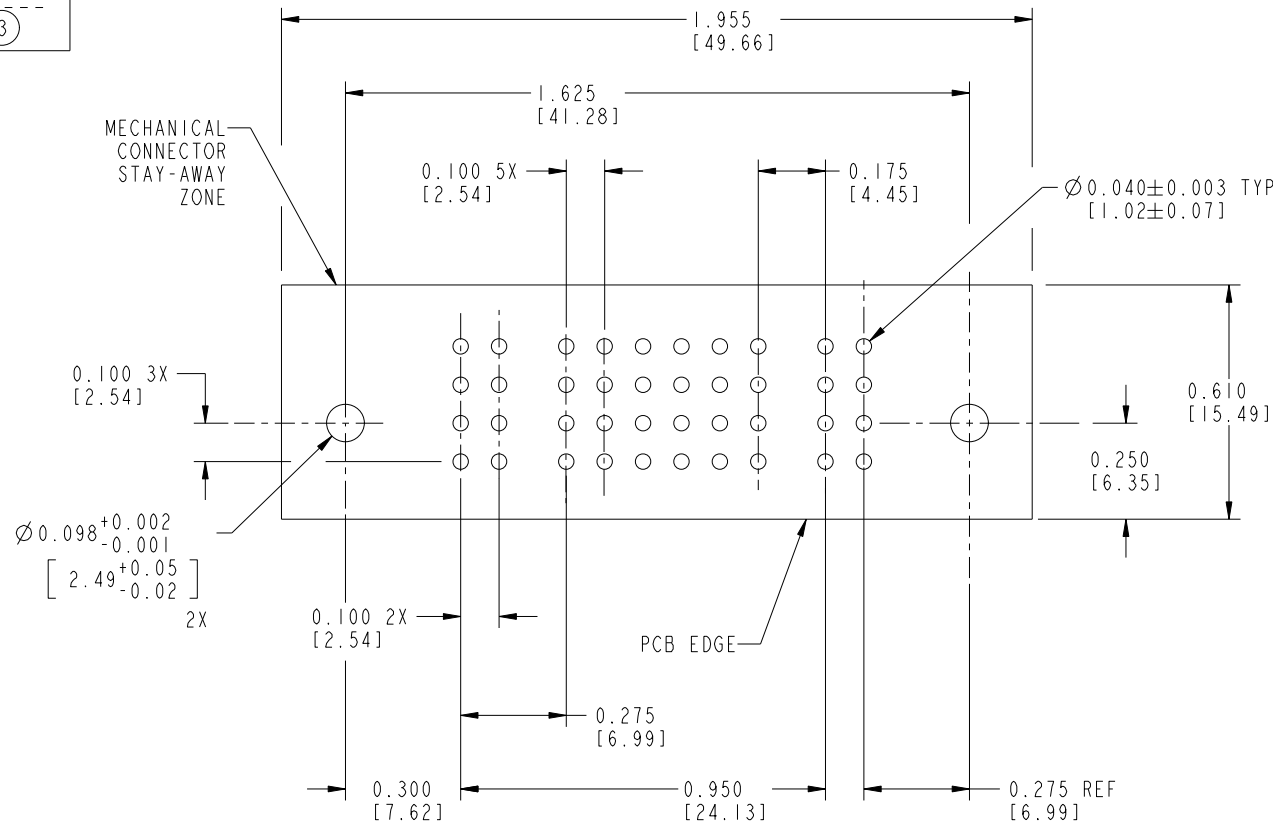
PDM: Rev:F

STATUS: Released

Printed: Dec 13, 2005

FCI

PRODUCT NUMBER
51416-00X ---
NOTE (3)



RECOMMENDED PCB LAYOUT

mat'l code				SEE NOTES		tolerances unless otherwise specified		CUSTOMER COPY		A FCI www.fciconnect.com	
ltr	ecn no.	dr	date			.XX ± .01 / .X ± .3				title IP + 24S + IP RIGHT ANGLE SOLDER RECEPT	
F				linear		.XXX ± .005 / .XX ± .13		projection			
						.XXXX ± .0020 / .XXX ± .051				product family PwrBlade	
				angles		0° ± 2°					
				dr	LEVEL 4	01-12-99		INCH/MM 3:2		size 51416	
				enrg	J. BROWN	01-12-99					
				chr	J. BROWN	01-12-99				code 213	
				appd	J. BROWN	01-12-99					
sheet index	revision sheet										sheet 3

1 | 2

3 |

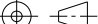

4

ITEM NO.	QTY	DIM "M" MATING LENGTH ±.010		DIM "T" TAIL LENGTH +.005- [.13]-.010 [.25]		CONTACT TYPE
PB	2	0.042	[1.07]	0.090	[2.29]	POWER
J	6	N/A	[N/A]	0.090	[2.29]	SIGNAL
K	6	N/A	[N/A]	0.090	[2.29]	SIGNAL
L	6	N/A	[N/A]	0.090	[2.29]	SIGNAL
M	6	N/A	[N/A]	0.090	[2.29]	SIGNAL
HA	2	N/A	[N/A]	N/A	[N/A]	HOLD-DOWN

PRODUCT No.	ROWS		POWER	SIGNAL						POWER	
		E2	P2	6	5	4	3	2	1	P1	E1
51416-001 NOTE ③	D C B A			M	M	M	M	M	M		
				L	L	L	L	L	L		
				K	K	K	K	K	K		
				J	J	J	J	J	J		

ITEM NO.	QTY	DIM "M" MATING LENGTH ±.010 [.25]		DIM "T" TAIL LENGTH ±.010 [.25]		CONTACT TYPE
PA	2	0.042	[1.07]	0.135	[3.43]	POWER
E	6	N/A	[N/A]	0.135	[3.43]	SIGNAL
F	6	N/A	[N/A]	0.135	[3.43]	SIGNAL
G	6	N/A	[N/A]	0.135	[3.43]	SIGNAL
H	6	N/A	[N/A]	0.135	[3.43]	SIGNAL
HA	2	N/A	[N/A]	N/A	[N/A]	HOLD-DOWN

PRODUCT No.	ROWS		POWER	SIGNAL						POWER	
		E2	P2	6	5	4	3	2	1	P1	E1
51416-002-- NOTE ③	D C B A			H	H	H	H	H	H		
				G	G	G	G	G	G		
				F	F	F	F	F	F		
				E	E	E	E	E	E		

mat'l code				SEE NOTES				tolerances unless otherwise specified				CUSTOMER COPY				<div><div>A</div><div>FCI</div><div>www.fciconnect.com</div></div>			
ltr	ecn no.	dr	date	linear	.XX ±.01/.X ±.3				projection 	title IP + 24S + IP RIGHT ANGLE SOLDER RECEPT									
F					.XXX ±.005/.XX ±.13														
					.XXXX ±.0020/.XXX ±.051														
				angles	0° ± 2°				INCH/MM 	product family				PwrBlade		code			
				dr	LEVEL 4	01-12-99		size		dwg no		213							
				enrg	J. BROWN	01-12-99		A		51416		sheet 4							
				chr	J. BROWN	01-12-99													
				appd	J. BROWN	01-12-99													
sheet index		revision sheet																	

1 | 2

Pro/E

PDM: Rev:F

STATUS: Released

Printed: Dec 13, 2005

PRODUCT NUMBER

51416-00X ---
NOTE ③

NOTES:

1. DIMENSIONS AND TOLERANCES ARE IN ACCORDANCE WITH
ASME Y14.5M, 1994 UNLESS OTHERWISE SPECIFIED.

CONNECTOR NOTES:

2. HOUSING MATERIAL: UL 94 V-0 GLASS FILLED
HIGH-TEMP THERMOPLASTIC
POWER CONTACT MATERIAL: COPPER ALLOY
SIGNAL PIN MATERIAL: COPPER ALLOY

3. PLATING(51416-00X STAND FOR 51416-001 AND 51416-002)
51416-00X - 30u"/0.76um Au OVER 50u"/1.27um Ni ON THE CONTACT AREA.
100u"/2.54um SnPb PLATING ON THE TERMINATION SECTION.
51416-00XLF - 30u"/0.76um Au OVER 50u"/1.27um Ni ON THE CONTACT AREA.
78u"/2.00um Sn PLATING ON THE TERMINATION SECTION.
51416-001GLF - 30u"/0.76um Au OVER 50u"/1.27um Ni ON THE CONTACT AREA.
5u"/0.13um Au PLATING ON THE TERMINATION SECTION.

PART NUMBER WITH "LF" SUFFIX MEETS EUROPEAN UNION DIRECTIVE AND OTHER COUNTRY REGULATIONS AS DESCRIBED IN GS-22-008.

THE HOUSING WILL WITHSTAND EXPOSURE TO 260° PEAK TEMPERATURE FOR 10 SECONDS IN A WAVE SOLDER APPLICATION WITH A CIRCUIT BOARD.

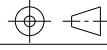
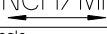
4. MANUFACTURER'S NAME, P/N, AND DATE CODE TO APPEAR ON THIS SURFACE.

5. PRODUCT SPECIFICATION GS-12-149.
APPLICATION SPECIFICATION BUS-20-067.

PCB NOTES:

6. ALL HOLE DIAMETERS ARE FINISHED HOLE SIZE.
7. MOUNTING HOLES, WHERE APPLICABLE, ARE UNPLATED.
8. $\varnothing.0453 \pm 0.0010$ [1.151 \pm 0.025] DRILLED HOLES PLATED WITH
.0003 [0.008] MIN SnPb OVER .001 [0.03]
TO .003 [0.08] Cu PLATING TO ACHIEVE
 $\varnothing.040 \pm .003$ [1.02 \pm .07] HOLE.
9. "DIM XXX" TO BE DETERMINED BY THE CUSTOMER.
10. CONNECTOR KEEP-OUT ZONE.

THIS FILE WAS ORIGINALLY CREATED IN THE PRO
ENGINEER ENVIRONMENT AND ANY FUTURE REVISIONS TO
THIS FILE MUST BE MADE IN THE PRO ENGINEER
ENVIRONMENT

mat'l code				SEE NOTES				tolerances unless otherwise specified				CUSTOMER				<div><div>A</div><div>FCI</div><div>www.fciconnect.com</div></div>									
lfr	ecn no.	dr	date	linear	.XX±.01/0.X±0.3				COPY				<div><div>projection</div><div></div></div>	title											
F					.XXX±.005/0.XX±0.13									IP + 24S + IP											
					.XXXX±.0020/0.XXX±0.051									RIGHT ANGLE SOLDER RECEPT											
				angles	0°±2°								<div><div>INCH/MM</div><div></div></div>	product family				PwrBlade				code			
				dr	LEVEL 4 01-12-99									size		dwg no		213							
				enrg	J. BROWN 01-12-99													sheet							
				chr	J. BROWN 01-12-99												5								
				appd	J. BROWN 01-12-99				scale 3:2				A		51416										
sheet index		revision sheet																							