

GENERAL DESCRIPTION

The CM1085 series of high performance positive voltage regulators are designed for use in applications requiring low dropout performance at full rated current. Additionally, the CM1085 series provides excellent regulation over variations in line, load and temperature.

Outstanding features include low dropout performance at rated current, fast transient response, internal current limiting and thermal shutdown protection of the output device. The CM1085 series are three terminal regulators with adjustable voltage options available in popular packages.

FEATURES

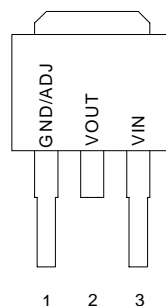
- ◆ Low dropout performance
- ◆ 1.3V max. for CM1085
- ◆ Full current rating over line and temperature
- ◆ Fast transient response
- ◆ $\pm 2\%$ total output regulation over line, load and temperature
- ◆ Adjust pin current max 90 μ A over temperature
- ◆ Adjustable output voltage
- ◆ Line regulation typically 0.015%
- ◆ Load regulation typically 0.1%
- ◆ TO-252 package

APPLICATIONS

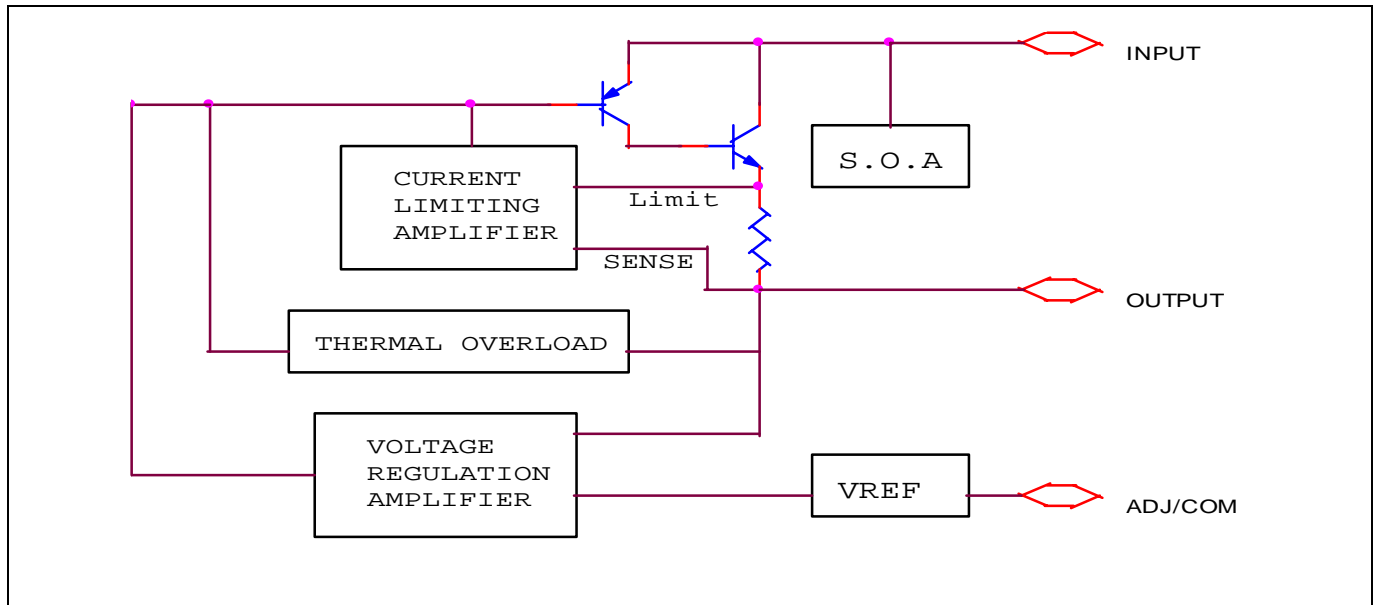
- ◆ Power Supplies
- ◆ Computer Add-On Cards
- ◆ Other Applications Requiring Low Dropout Voltage Over Rated Current

PIN CONFIGURATION

TO-252
Top View



BLOCK DIAGRAM



ORDERING INFORMATION

Package Type	Operating Temperature Range (T _A)	Output Voltage
TO-252		
CM1085KCN252	0°C ~ +70°C	2.5V
CM1085SCN252	0°C ~ +70°C	3.3V
CM1085CN252	0°C ~ +70°C	ADJ.

ABSOLUTE MAXIMUM RATINGS

Parameter	Symbol	Maximum	Units
Input Supply Voltage	V _{IN}	7	V
Power Dissipation	P _D	Internally Limited.	W
Thermal Resistance Junction to Case TO-263	θ _{JC}	2.5	°C/W
Thermal Resistance Junction to Ambient TO-252	θ _{JA}	80	°C/W
Operating Junction Temperature Range	T _J	0 to 125	°C
Storage Temperature Range	T _{STG}	-65 to 150	°C
Lead Temperature (Soldering) 10 Sec	T _{LEAD}	260	°C

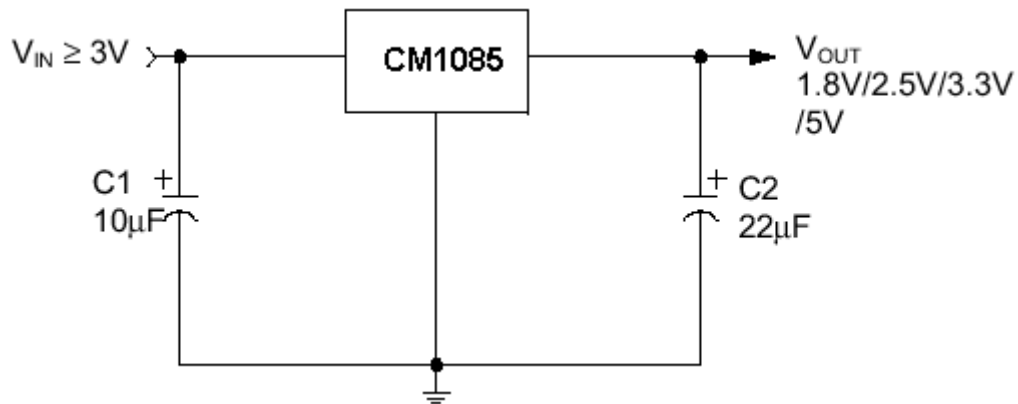
ELECTRICAL CHARACTERISTICS

Unless otherwise specified, Adj $V_{IN} = 3.8V$ to $7.0V$ and Adj $I_O = 10mA$ to $3.0A$, Fixed mode $V_{IN} = 4.75V$ to $7.0V$ and Adj $I_O = 10mA$ to $3.0A$

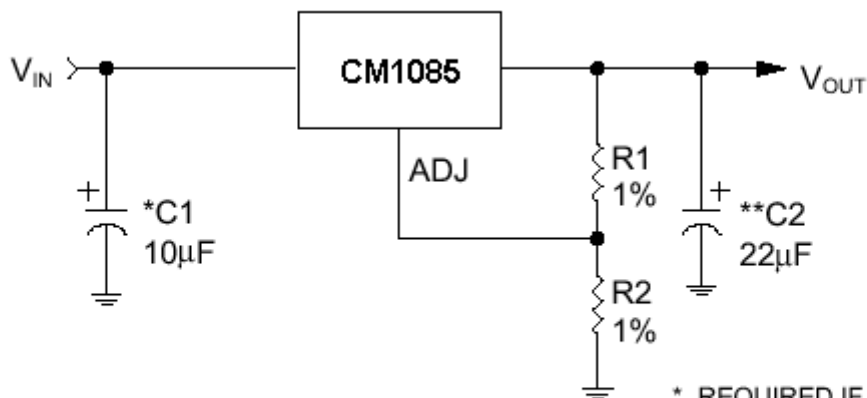
Parameter	Symbol	Test Conditions			Test Limits			Units
		V_{IN}	I_O	T_J	Min	Typ	Max	
Output Voltage ⁽¹⁾	V_O	5V	0mA	25°C	0.991 V_{OI}	V_O	1.011 V_{OI}	V
Fixed Voltage			3A	125°C	0.981 V_{OI}	V_O	1.021 V_{OI}	
Reference Voltage ⁽¹⁾	V_{REF}	5V	10mA	25°C	1.238	1.250	1.262	V
Adj Voltage Version			3A	125°C	1.225	1.250	1.275	
Line Regulation ⁽¹⁾	REG (LINE)		10mA	25°C		0.015	0.2	%
Load Regulation ⁽¹⁾	REG (LOAD)	5V		25°C		0.1	0.3	%
Dropout Voltage ⁽²⁾	V_D			25°C		1		V
CM1085				125°C		1.1	1.3	
Current Limit	I_{CL}			125°C	5.0	7.5		A
Quiescent Current (fixed voltage)	I_O	5V				12	14	mA
Temperature Coefficient	T_C					0.005		%/°C
Adjust Pin Current	I_{ADJ}			25°C		55	120	μA
Adjust Pin Current Change	ΔI_{ADJ}					0.2	5	μA
Temperature Stability	T_S	5V	0.5A			0.5		%
Minimum Load Current	I_O	5V				5	14	mA
Adj Voltage Version								
RMS Output Noise ⁽³⁾	V_N			25°C		0.003		% V_O
Ripple Rejection Ratio ⁽⁴⁾	R_A	5V	5.0A	125°C	60	72		dB

NOTES :

- (1) Low duty cycle pulse testing with Kelvin connections required.
- (2) ΔV_{OUT} , $\Delta V_{REF} = 1\%$
- (3) Bandwidth of 10 Hz to 10 kHz.
- (4) 120 Hz input ripple (C_{ADJ} for ADJ=25 μF)

APPLICATION CIRCUIT


Fixed Output Voltage Regulator

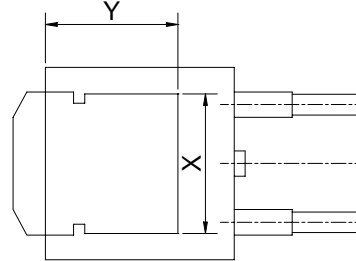
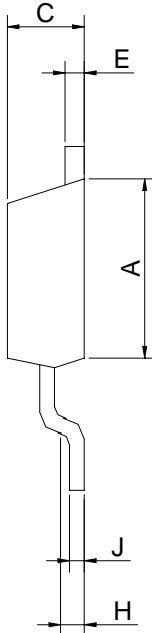
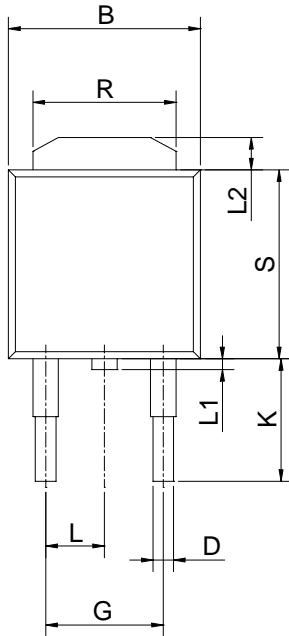


$$V_{OUT} = V_{REF} (1 + (R2/R1)) + I_{ADJ}R2$$

* REQUIRED IF REGULATOR IS LOCATED FAR FROM POWER SUPPLY FILTER

** DESIGN C2 AS CLOSE TO V_{OUT} PIN AS POSSIBLE

Adjustable Regulator

PACKAGE DIMENSION
TO-252 (N252)


SYMBOLS	DIMENSIONS IN MILLIMETERS			DIMENSIONS IN INCHES		
	MIN	NOM	MAX	MIN	NOM	MAX
A	5.97	---	6.35	0.235	---	0.250
B	6.35	---	6.73	0.250	---	0.265
C	2.19	---	2.38	0.086	---	0.094
D	0.69	---	0.88	0.027	---	0.035
E	0.46	---	0.58	0.018	---	0.023
G	4.58BSC			0.180BSC		
H	0.87	---	1.01	0.034	---	0.040
J	0.46	---	0.58	0.018	---	0.023
K	2.60	---	2.89	0.102	---	0.114
L	2.29BSC			0.090BSC		
R	4.45	---	5.46	0.175	---	0.215
S	5.33	---	5.59	0.210	---	0.220
L1	0.64	---	1.02	0.025	---	0.040
L2	1.52	---	2.03	0.060	---	0.080
X	4.12	---	4.56	0.162	---	0.179
Y	5.11	---	5.72	0.201	---	0.225

IMPORTANT NOTICE

Champion Microelectronic Corporation (CMC) reserves the right to make changes to its products or to discontinue any integrated circuit product or service without notice, and advises its customers to obtain the latest version of relevant information to verify, before placing orders, that the information being relied on is current.

A few applications using integrated circuit products may involve potential risks of death, personal injury, or severe property or environmental damage. CMC integrated circuit products are not designed, intended, authorized, or warranted to be suitable for use in life-support applications, devices or systems or other critical applications. Use of CMC products in such applications is understood to be fully at the risk of the customer. In order to minimize risks associated with the customer's applications, the customer should provide adequate design and operating safeguards.

HsinChu Headquarter

5F, No. 11, Park Avenue II,
Science-Based Industrial Park,
HsinChu City, Taiwan
TEL: +886-3-567 9979
FAX: +886-3-567 9909

Sales & Marketing

11F, No. 306-3, SEC. 1, Ta Tung Road,
Hsichih, Taipei Hsien 221, Taiwan
TEL: +886-2-8692 1591
FAX: +886-2-8692 1596
