

### GENERAL DESCRIPTION

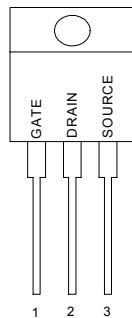
This high voltage MOSFET uses an advanced termination scheme to provide enhanced voltage-blocking capability without degrading performance over time. In addition, this advanced MOSFET is designed to withstand high energy in avalanche and commutation modes. The new energy efficient design also offers a drain-to-source diode with a fast recovery time. Designed for high voltage, high speed switching applications in power supplies, converters and PWM motor controls, these devices are particularly well suited for bridge circuits where diode speed and commutating safe operating areas are critical and offer additional and safety margin against unexpected voltage transients.

### FEATURES

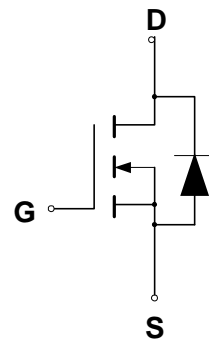
- ◆ Robust High Voltage Termination
- ◆ Avalanche Energy Specified
- ◆ Source-to-Drain Diode Recovery Time Comparable to a Discrete Fast Recovery Diode
- ◆ Diode is Characterized for Use in Bridge Circuits
- ◆  $I_{DSS}$  Specified at Elevated Temperature

### PIN CONFIGURATION

TO-220/TO-220FP  
Front View



### SYMBOL



N-Channel MOSFET

### ABSOLUTE MAXIMUM RATINGS

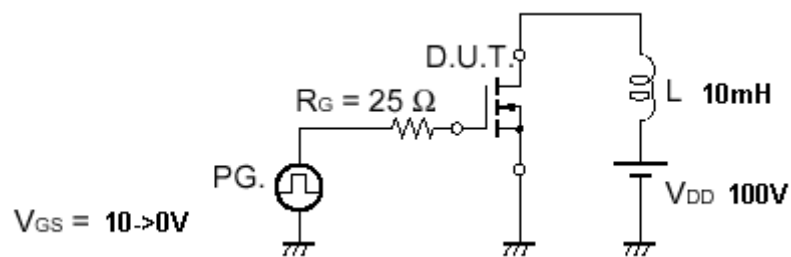
Rating	Symbol	Value	Unit
Drain to Current — Continuous	$I_D$	6.0	A
— Pulsed	$I_{DM}$	18	A
Gate-to-Source Voltage — Continue	$V_{GS}$	$\pm 20$	V
— Non-repetitive	$V_{GSM}$	$\pm 40$	V
Total Power Dissipation	$P_D$		W
TO-220		125	
TO-220FP		45	
Operating and Storage Temperature Range	$T_J, T_{STG}$	-55 to 150	$^{\circ}\text{C}$
Single Pulse Drain-to-Source Avalanche Energy — $T_J = 25^{\circ}\text{C}$ ( $V_{DD} = 100\text{V}$ , $V_{GS} = 10\text{V}$ , $I_L = 6\text{A}$ , $L = 10\text{mH}$ , $R_G = 25\Omega$ )	$E_{AS}$	180	mJ
Thermal Resistance — Junction to Case	$\theta_{JC}$	1.0	$^{\circ}\text{C}/\text{W}$
— Junction to Ambient	$\theta_{JA}$	62.5	$^{\circ}\text{C}/\text{W}$
Maximum Lead Temperature for Soldering Purposes, 1/8" from case for 10 seconds	$T_L$	260	$^{\circ}\text{C}$

- (1)  $V_{DD} = 50\text{V}$ ,  $I_D = 6\text{A}$   
 (2) Pulse Width and frequency is limited by  $T_{J(max)}$  and thermal response

### ORDERING INFORMATION

Part Number	Package
CMT06N60N220	TO-220
CMT06N60N220FP	TO-220FP

### TEST CIRCUIT



Test Circuit – Avalanche Capability

### ELECTRICAL CHARACTERISTICS

Unless otherwise specified,  $T_J = 25^\circ\text{C}$ .

Characteristic		Symbol	CMT06N60			Units
			Min	Typ	Max	
Drain-Source Breakdown Voltage ( $V_{GS} = 0\text{ V}$ , $I_D = 250\text{ }\mu\text{A}$ )		$V_{(BR)DSS}$	600			V
Drain-Source Leakage Current ( $V_{DS} = 600\text{ V}$ , $V_{GS} = 0\text{ V}$ ) ( $V_{DS} = 480\text{ V}$ , $V_{GS} = 0\text{ V}$ , $T_J = 125^\circ\text{C}$ )		$I_{DSS}$			100 50	$\mu\text{A}$
Gate-Source Leakage Current-Forward ( $V_{gsf} = 20\text{ V}$ , $V_{DS} = 0\text{ V}$ )		$I_{GSSF}$			100	nA
Gate-Source Leakage Current-Reverse ( $V_{gsr} = 20\text{ V}$ , $V_{DS} = 0\text{ V}$ )		$I_{GSSR}$			100	nA
Gate Threshold Voltage ( $V_{DS} = V_{GS}$ , $I_D = 250\text{ }\mu\text{A}$ )		$V_{GS(th)}$	2.0		4.0	V
Static Drain-Source On-Resistance ( $V_{GS} = 10\text{ V}$ , $I_D = 3.5\text{ A}$ ) *		$R_{DS(on)}$			1.2	$\Omega$
Forward Transconductance ( $V_{DS} = 15\text{ V}$ , $I_D = 3.0\text{ A}$ ) *		$g_{FS}$	3.4			mhos
Input Capacitance	$(V_{DS} = 25\text{ V}$ , $V_{GS} = 0\text{ V}$ , $f = 1.0\text{ MHz}$ )	$C_{iss}$		1498	2100	pF
Output Capacitance		$C_{oss}$		158	220	pF
Reverse Transfer Capacitance		$C_{rss}$		29	60	pF
Turn-On Delay Time	$(V_{DD} = 300\text{ V}$ , $I_D = 6.0\text{ A}$ , $V_{GS} = 10\text{ V}$ , $R_G = 9.1\Omega$ ) *	$t_{d(on)}$		14	30	ns
Rise Time		$t_r$		19	40	ns
Turn-Off Delay Time		$t_{d(off)}$		40	80	ns
Fall Time		$t_f$		26	55	ns
Total Gate Charge	$(V_{DS} = 300\text{ V}$ , $I_D = 6.0\text{ A}$ , $V_{GS} = 10\text{ V}$ )*	$Q_g$		35.5	50	nC
Gate-Source Charge		$Q_{gs}$		8.1		nC
Gate-Drain Charge		$Q_{gd}$		14.1		nC
Internal Drain Inductance (Measured from the drain lead 0.25" from package to center of die)		$L_D$		4.5		nH
Internal Drain Inductance (Measured from the source lead 0.25" from package to source bond pad)		$L_S$		7.5		nH
<b>SOURCE-DRAIN DIODE CHARACTERISTICS</b>						
Forward On-Voltage(1)	$(I_S = 6.0\text{ A}$ , $dI_S/dt = 100\text{ A}/\mu\text{s}$ )	$V_{SD}$		0.83	1.2	V
Forward Turn-On Time		$t_{on}$		**		ns
Reverse Recovery Time		$t_{rr}$		266		ns

\* Pulse Test: Pulse Width  $\leq 300\mu\text{s}$ , Duty Cycle  $\leq 2\%$

\*\* Negligible, Dominated by circuit inductance

### TYPICAL ELECTRICAL CHARACTERISTICS

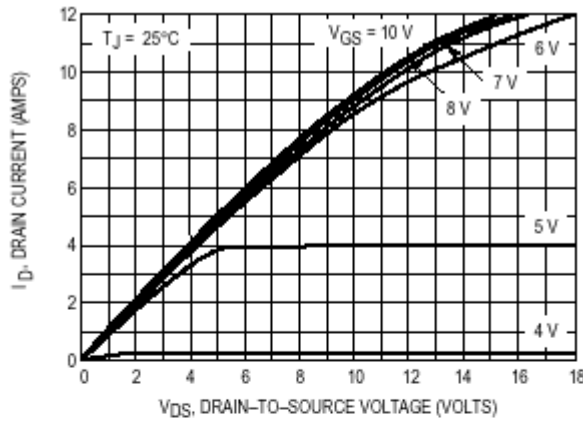


Figure 1. On-Region Characteristics

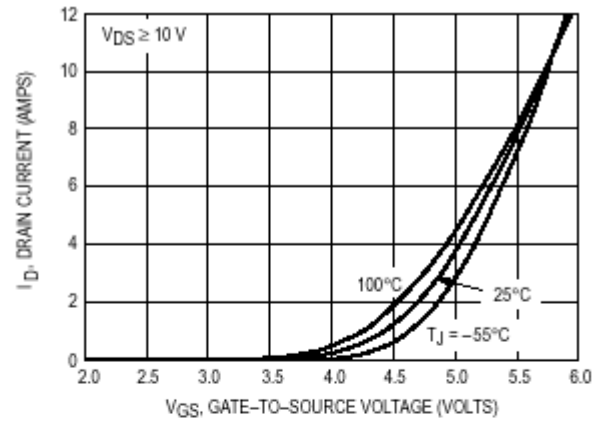


Figure 2. Transfer Characteristics

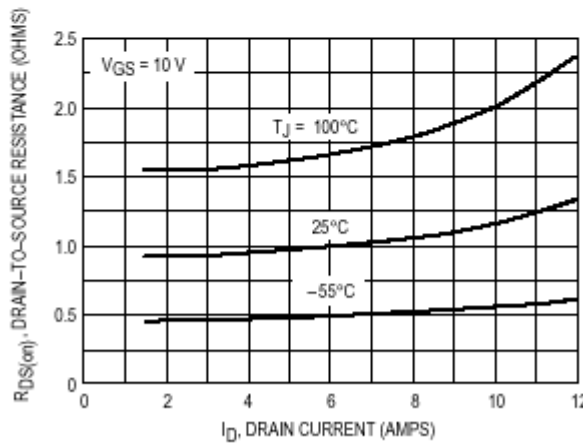


Figure 3. On-Resistance versus Drain Current and Temperature

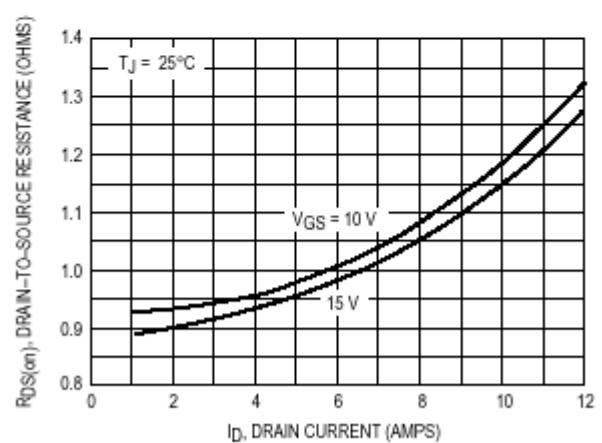


Figure 4. On-Resistance versus Drain Current and Gate Voltage

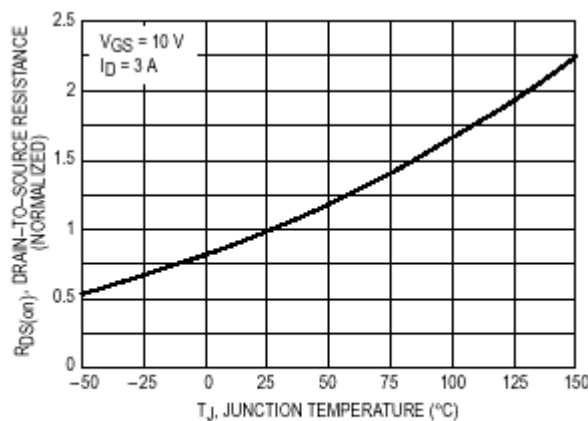


Figure 5. On-Resistance Variation with Temperature

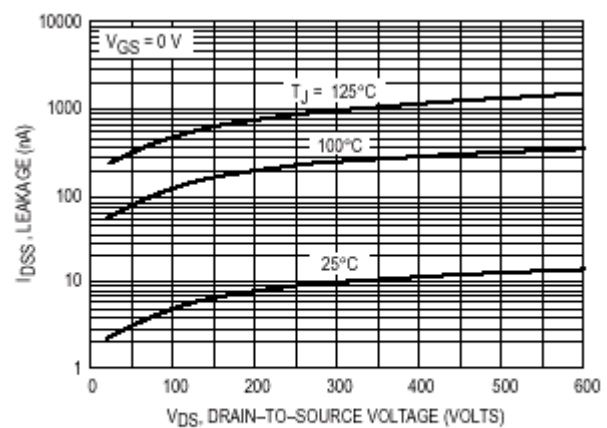
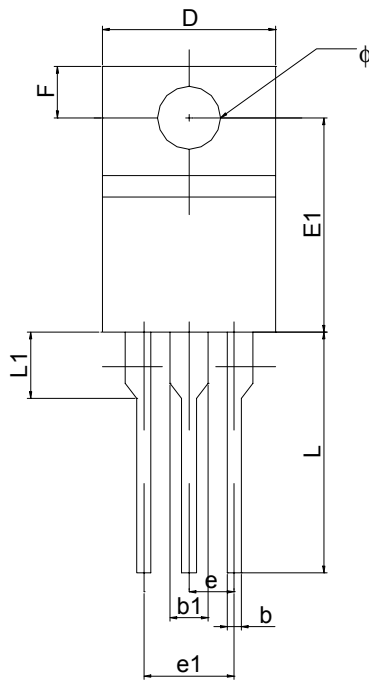
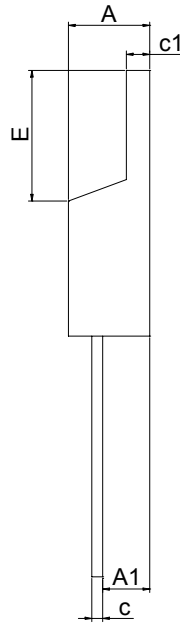


Figure 6. Drain-To-Source Leakage Current versus Voltage

**PACKAGE DIMENSION**
**TO-220**


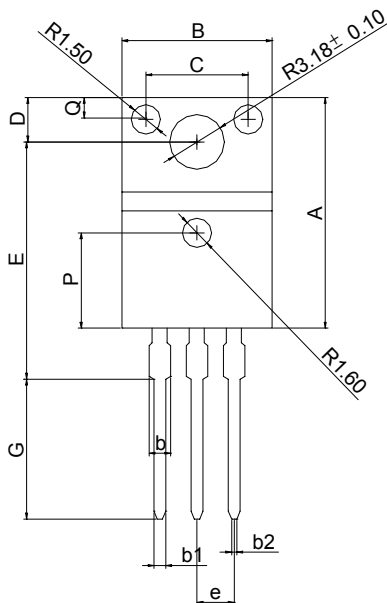
Front View



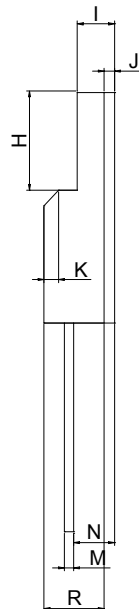
Side View

**PIN 1: GATE**  
**PIN 2: DRAIN**  
**PIN 3: SOURCE**

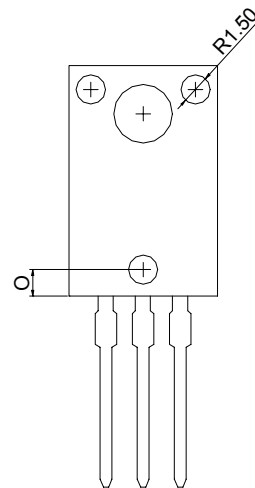
SYMBOLS	DIMENSIONS IN MILLIMETERS			DIMENSIONS IN INCHES		
	MIN	NOM	MAX	MIN	NOM	MAX
A	4.47	---	4.67	0.176	---	0.184
A1	2.52	---	2.62	0.099	---	0.111
b	0.71	---	0.91	0.028	---	0.036
b1	1.17	---	1.37	0.046	---	0.054
c	0.31	---	0.53	0.012	---	0.021
c1	1.17	---	1.37	0.046	---	0.054
D	10.01	---	10.31	0.394	---	0.406
E	8.50	---	8.90	0.335	---	0.350
E1	12.06	---	12.46	0.475	---	0.491
e	---	2.54	---	---	0.100	---
e1	4.98	---	5.18	0.196	---	0.204
F	2.59	---	2.89	0.102	---	0.114
L	13.40	---	13.80	0.528	---	0.543
L1	3.56	---	3.96	0.140	---	0.156
Φ	3.79	---	3.89	0.149	---	0.153

**TO-220FP**


Front View



Side View



Back View

SYMBOLS	DIMENSIONS IN MILLIMETERS			DIMENSIONS IN INCHES		
	MIN	NOM	MAX	MIN	NOM	MAX
A	15.67	---	16.07	0.617	---	0.633
B	9.96	---	10.36	0.392	---	0.408
C	---	7.00	---	---	0.275	---
D	3.20	---	3.40	0.126	---	0.134
E	15.60	---	16.00	0.614	---	0.630
G	9.45	---	10.05	0.372	---	0.396
H	6.48	---	6.88	0.255	---	0.279
I	2.34	---	2.74	0.092	---	0.108
J	---	0.70	---	---	0.028	---
K	---	1.00	---	---	0.039	---
M	0.45	---	0.60	0.018	---	0.024
N	2.56	---	2.96	0.101	---	0.117
O	---	1.80	---	---	0.071	---
P	---	6.50	---	---	0.256	---
Q	---	1.50	---	---	0.059	---
R	4.50	---	4.90	0.177	---	0.193
b	---	---	1.47	---	---	0.058
b1	0.70	---	0.90	0.028	---	0.035
b2	0.25	---	0.45	0.010	---	0.018
e	---	2.54	---	---	0.100	---

## IMPORTANT NOTICE

Champion Microelectronic Corporation (CMC) reserves the right to make changes to its products or to discontinue any integrated circuit product or service without notice, and advises its customers to obtain the latest version of relevant information to verify, before placing orders, that the information being relied on is current.

A few applications using integrated circuit products may involve potential risks of death, personal injury, or severe property or environmental damage. CMC integrated circuit products are not designed, intended, authorized, or warranted to be suitable for use in life-support applications, devices or systems or other critical applications. Use of CMC products in such applications is understood to be fully at the risk of the customer. In order to minimize risks associated with the customer's applications, the customer should provide adequate design and operating safeguards.

### HsinChu Headquarter

---

5F, No. 11, Park Avenue II,  
Science-Based Industrial Park,  
HsinChu City, Taiwan  
TEL: +886-3-567 9979  
FAX: +886-3-567 9909

### Sales & Marketing

---

11F, No. 306-3, SEC. 1, Ta Tung Road,  
Hsichih, Taipei Hsien 221, Taiwan  
TEL: +886-2-8692 1591  
FAX: +886-2-8692 1596

---