



### Applications

- Motor Control
- Overvoltage Crowbar Protection
- Capacitive Discharge Ignition
- Voltage Regulation
- Welding Equipment
- Capacitive Filter Soft Start (Inrush Current Control)

- > Suitable for General Purpose AC Switching
- > IGT 35mA Max.
- > VDRM/VRMM 400, 600, 800, 1000V

## CYNB40

40Amp - 400/600/800/1000V - **SCR**

### Absolute Maximum Ratings

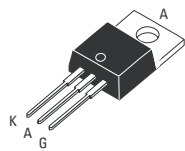
	CONDITIONS	SYMBOL	RATING
RMS On-State Current (full sine wave)	$T_c = 90^\circ\text{C}$	TO-220AB	$I_{T(RMS)}$ 40A
Average On-State Current	$T_c = 90^\circ\text{C}$	TO-220AB	$I_{T(AV)}$ 25A
Non Repetitive Surge Peak On-State Current (Full Cycle, $T_j$ Initial = $25^\circ\text{C}$ )	F = 50 Hz F = 60 Hz	$I_{TSM}$	530A 550A
$I^2t$ Value for fusing	$t_p = 10\text{ ms}$	$I^2t$	1260A <sup>2</sup> s
Critical rate of rise of on-state current $I_G = 2 \times I_{GT}$ , $t_r < 100\text{ ns}$ , $T_j = 125^\circ\text{C}$		$di/dt$	100A/ $\mu\text{s}$
Peak Gate Current @ $T_j = 125^\circ\text{C}$	$t_p = 20\text{ }\mu\text{s}$	$I_{GM}$	4A
Average Gate Power Dissipation @ $T_j = 125^\circ\text{C}$		$PG(AV)$	1W
Storage Temperature Range		$T_{stg}$	-40 to +150 $^\circ\text{C}$
Operating Junction Temperature Range		$T_j$	-40 to +125 $^\circ\text{C}$
Maximum Peak Reverse Gate Voltage		$V_{RGM}$	5V

### Electrical Characteristics NOTE 1

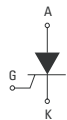
$I_{GT}\text{ MAX @ }V_D = 12\text{ V, }R_L = 30\Omega$		35mA
$V_{GT}\text{ MAX @ }V_D = 12\text{ V, }R_L = 30\Omega$		1.3V
$V_{GD}\text{ MIN @ }V_D = V_{DRM}, R_L = 3.3k\Omega$	$T_j = 125^\circ\text{C}$	0.2V
$I_H\text{ MAX @ }I_T = 500\text{ mA (gate open)}$		50mA
$I_L\text{ MAX @ }I_G = 1.2 I_{GT}$		90mA
$dv/dt\text{ MIN @ }V_D = 67\%V_{DRM}\text{ (gate open)}$	$T_j = 125^\circ\text{C}$	1000V/ $\mu\text{s}$
$V_{TM}\text{ MAX @ }I_{TM} = 56\text{ A, }t_p = 380\mu\text{s}$	$T_j = 25^\circ\text{C}$	1.6V
$I_{DRM}\text{ MAX @ }V_{DRM} = V_{RRM}$	$T_j = 25^\circ\text{C}$	5 $\mu\text{A}$
$I_{RRM}\text{ MAX @ }V_{DRM} = V_{RRM}$	$T_j = 125^\circ\text{C}$	4mA

### GENERAL NOTES

1. All parameters at 25 degrees C unless otherwise specified.



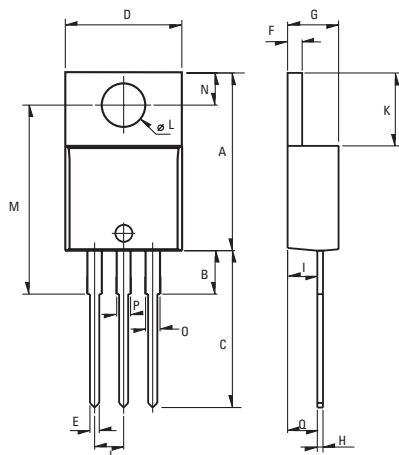
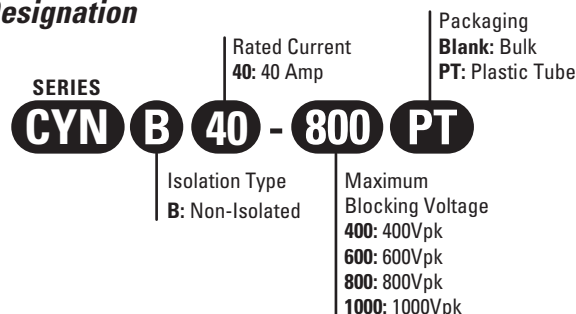
TO-220AB Non-Isolated  
(CYNB40)



## Thermal Resistances

		SYMBOL	RATING
Junction to Case (AC)	T0-220AB	$R_{th(j-c)}$	1.0°C/W
Junction to Ambient	T0-220AB	$R_{th(j-a)}$	60°C/W

## Part Number Designation



Weight: 2.3g (0.08 oz)

## Dimensions

REF.	Millimeters			Inches		
	Min.	Typ.	Max.	Min.	Typ.	Max.
A	15.24		15.75	0.6		0.62
B		3.23			0.127	
C	12.78		13.79	0.503		0.543
D	9.96		10.36	0.392		0.408
E	0.69		0.94	0.027		0.037
F	1.22		1.32	0.048		0.052
G	4.62		4.83	0.182		0.19
H	0.46		0.61	0.018		0.024
I	2.49		2.84	0.098		0.112
J	2.39		2.69	0.094		0.106
K	6.48		6.88	0.255		0.271
L	3.78		3.89	0.149		0.153
M	15.49	16	16.51	0.61	0.63	0.65
N	2.59		2.9	0.102		0.114
O	0.99		1.55	0.039		0.061
P	0.99		1.55	0.039		0.061
Q		2.67			0.105	

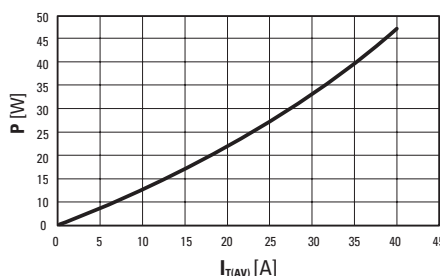


Fig. 1: Power dissipation versus average on-state current.

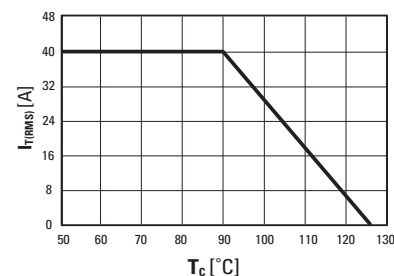


Fig. 2: RMS on-state current versus case temperature (full cycle)

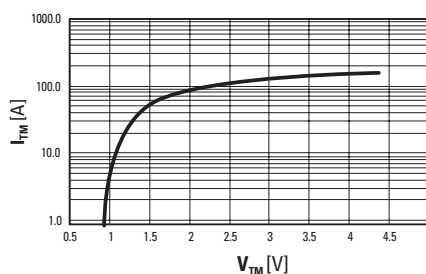


Fig. 3: On-state current versus on-state voltage (instantaneous values)

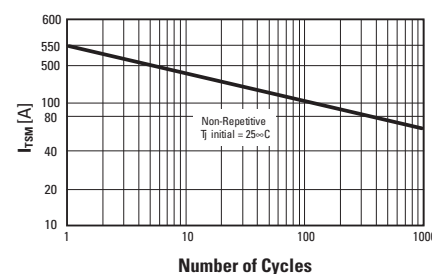


Fig. 4: Non-repetitive surge peak on-state current versus number of cycles.

## ISO9001 Certified

## Approvals

UL - E72445

## USA

Sales Support (877) 502-5500

Tech Support (877) 702-7700

Fax (619) 710-8540

Email: sales@crydom.com

Crydom Corp

2320 Paseo de las Americas, Suite 201  
San Diego, CA 92154

## EUROPE - UK

Telephone +44 (0) 1202 365070

Fax +44 (0) 1202 365090

Email: intsales@crydom.com

Crydom International Ltd.

7 Cobham Road

Ferndown Industrial Estate  
Wimborne, Dorset BH21 7PE

## Germany

Telephone +49 (0) 180 3000 506

## ASIA - Thailand

Telephone +66 (0)2 665 2517

Fax +66 (0)2 665 2588

Crydom Asia

18/8 Fico Place 12th Floor

Soi Sukhumvit 21 (Asoke)

Klongtoey Nua, Wattana

Bangkok, Thailand 10110