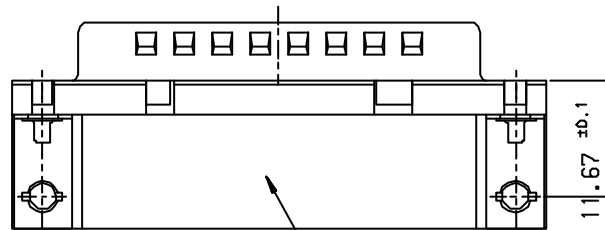
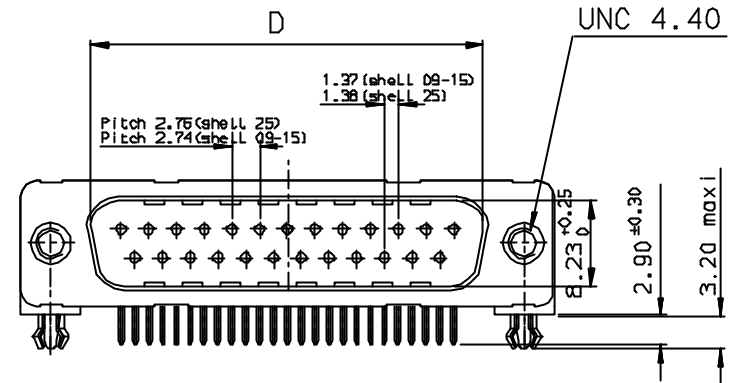
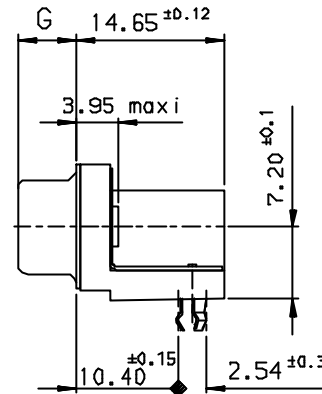
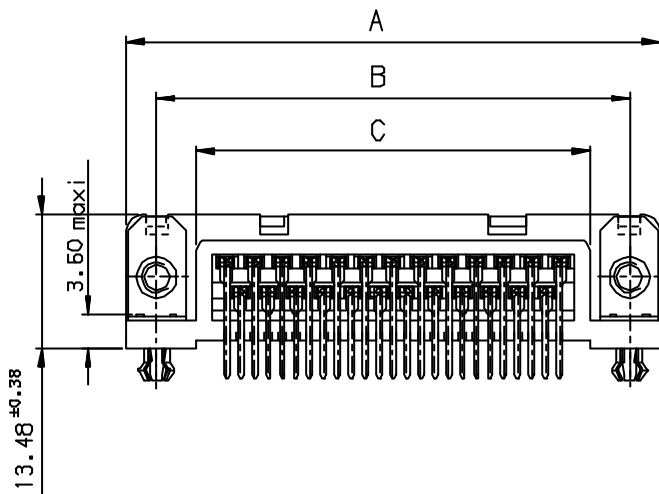


Tous droits strictement réservés. Reproduction ou communication sans l'autorisation écrite de la FCI est formellement interdite.  
All rights strictly reserved. Reproduction or communication without written authority from the proprietor of FCI. Copyright FCI.

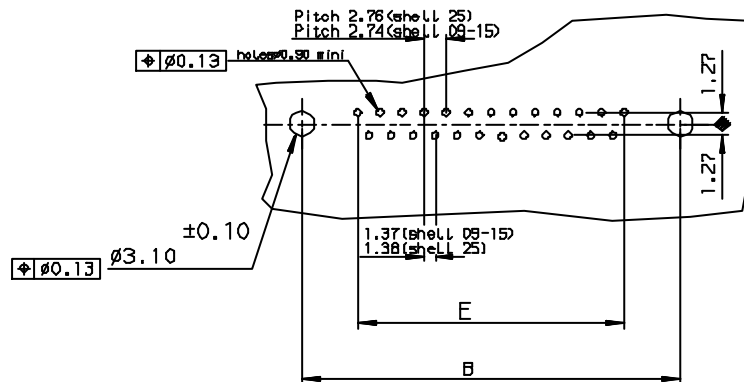
**FCI**

All rights strictly reserved. Reproduction or communication without written authority from the proprietor of FCI. Copyright FCI.



Part Number & Date Code Printing

PC card drilling dimensions(after plating)  
[thickness 1.60±0.20mm]

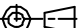
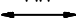



Core range						
SHELL	A±0.38	B±0.12	C±0.10	D±0.25	G±0.25	PART NUMBER
09	30.81	24.99	16.96	16.79	5.90	D09P13A4GX00**
15	39.14	33.32	25.18	25.12	5.90	D15P13A4GX00**
25	53.03	47.04	39.12	38.84	5.70	D25P13A4GX00**

GENERAL CHARACTERISTICS = SEE DRAWING C01-8646-0000

LF FOR LEAD FREE

Utr	Eon no	Dr	date
J	105-0124	J1	27/7/05

			✓		Tolerance LINEAR ±0.1 ANGULAR ±1°	Projection 	 MM	
Dr JOHN SLEEDA		1\8\94	Product Family		D-500	Size	A3	Scale
Eng GEORGE VJ		1\8\94	Spec ref					
Chr GEORGE VJ		27\7\05	Material			ECN		
Appr K Somasundaram		27\7\05						
	Title MALE CONNECT.DELTA D RIGHT ANGLED WITH NUT,HARPOON & METAL PLATE.				Dwg no C01-8646-02B1		Rev. J	
Catalog no		DELTA-D			CUSTOMER COPY		Sheet 1 of 1	