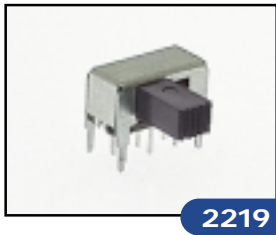
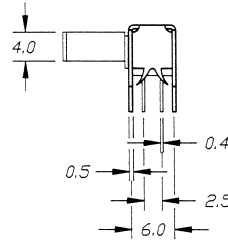
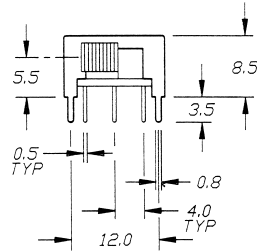
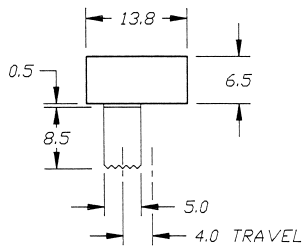


# SERIES E G SWITCHES

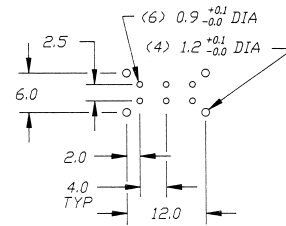
## SLIDE SWITCHES



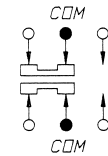
2219



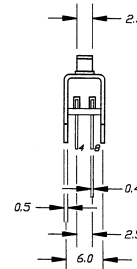
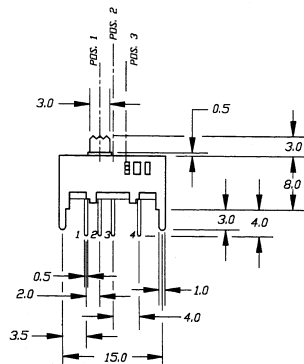
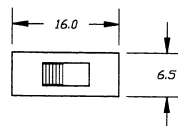
### P.C. MOUNTING



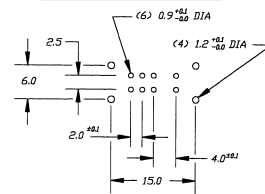
### Schematic



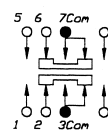
2301



### P.C. MOUNTING



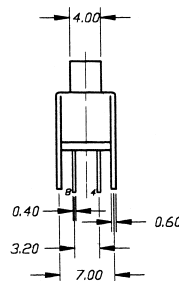
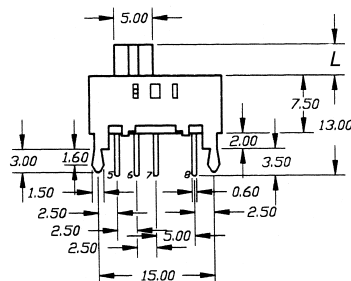
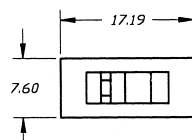
### Schematic



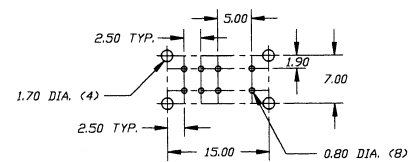
Model No.	L
EG2301	3
EG2301A	6
EG2301B	9
EG2301C	12



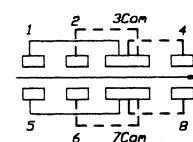
2303



### P.C. MOUNTING



### Schematic



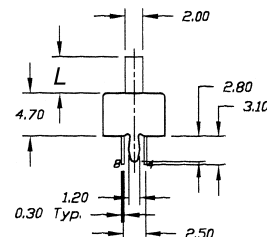
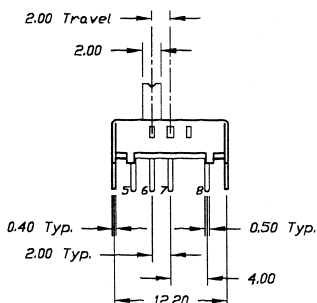
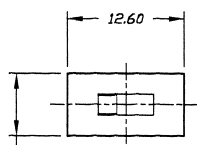
SPECIFICATIONS SUBJECT TO CHANGE WITHOUT NOTICE.

# SERIES E G SWITCHES

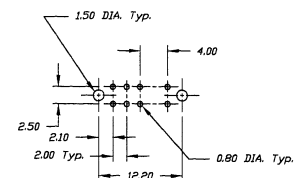
## SLIDE SWITCHES



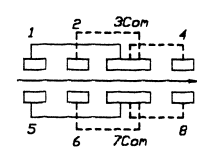
2305



### P.C. MOUNTING



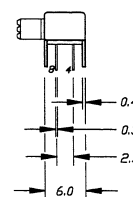
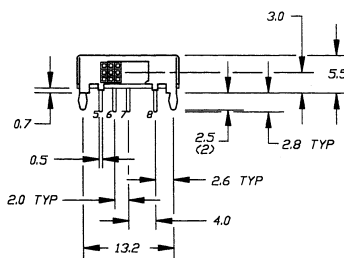
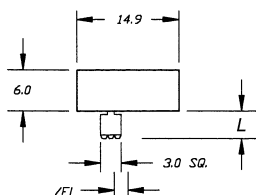
### Schematic



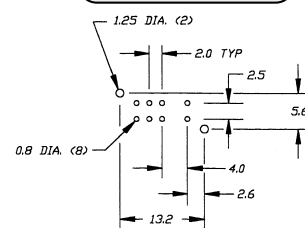
Model No.	L
EG2305	4
EG2305A	2



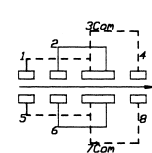
2308



### P.C. MOUNTING



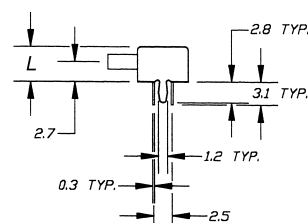
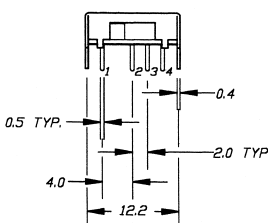
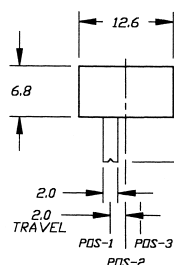
### Schematic



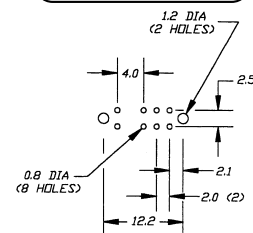
Model No.	L
EG2308	4
EG2308A	6



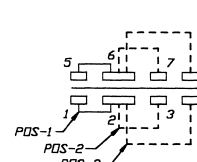
2310



### P.C. MOUNTING



### Schematic

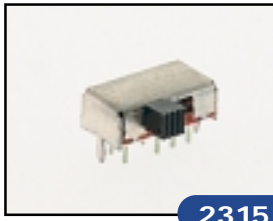


Model No.	L
EG2310	6
EG2310A	4

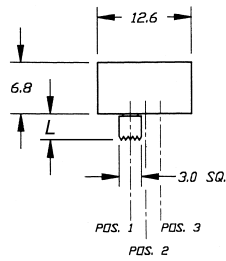
SPECIFICATIONS SUBJECT TO CHANGE WITHOUT NOTICE.

# SERIES E G SWITCHES

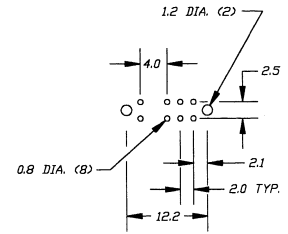
## SLIDE SWITCHES



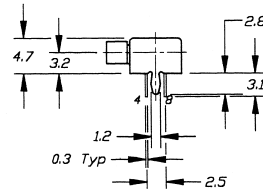
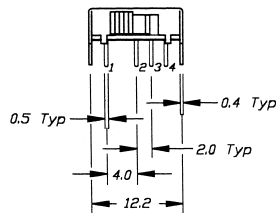
2315



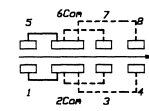
### P.C. MOUNTING



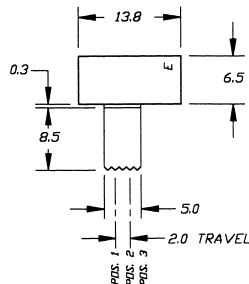
Model No.	L
EG2315	3.5
EG2315A	6



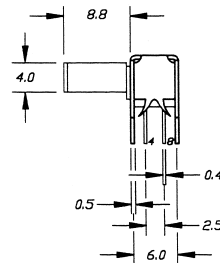
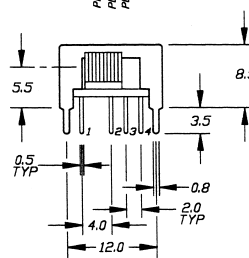
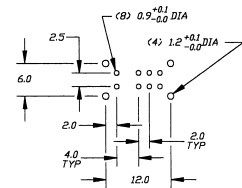
### Schematic



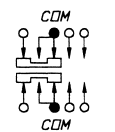
2319



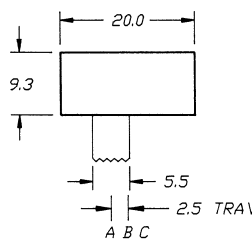
### P.C. MOUNTING



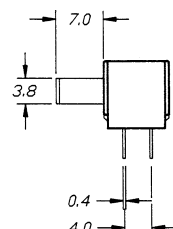
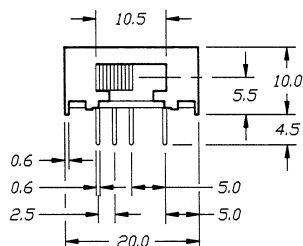
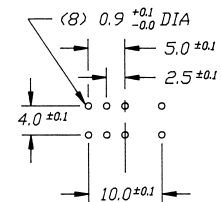
### Schematic



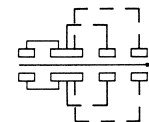
2322



### P.C. MOUNTING



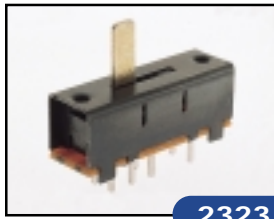
### Schematic



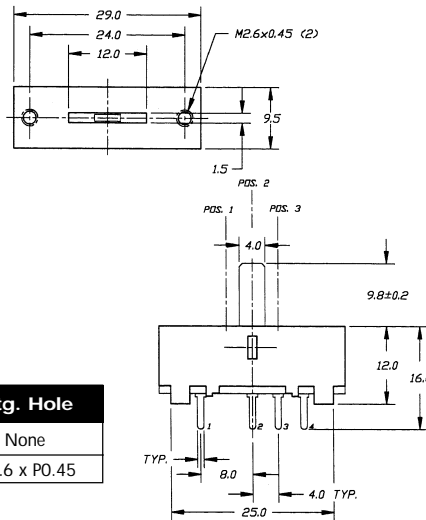
SPECIFICATIONS SUBJECT TO CHANGE WITHOUT NOTICE.

# SERIES E G SWITCHES

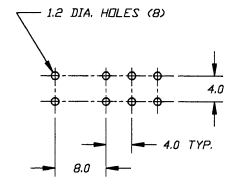
## SLIDE SWITCHES



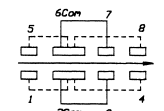
2323



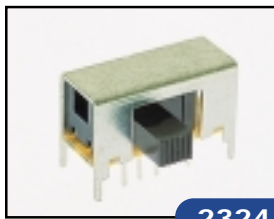
### P.C. MOUNTING



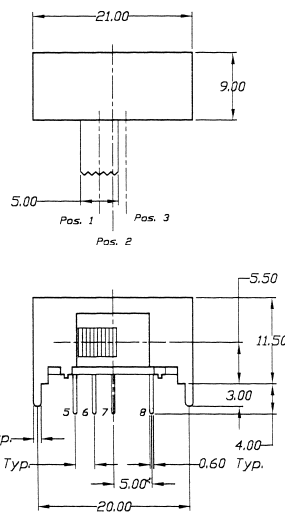
### Schematic



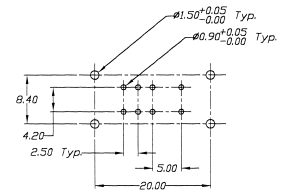
Model No.	Mtg. Hole
EG2323	None
EG2323A	M2.6 x P0.45



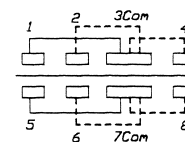
2324



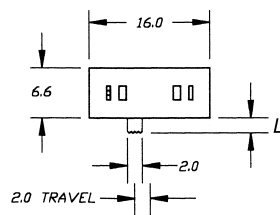
### P.C. MOUNTING



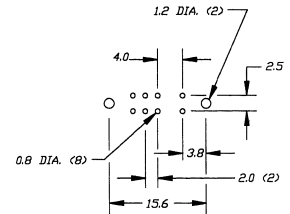
### Schematic



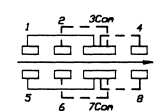
2325



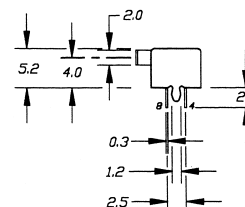
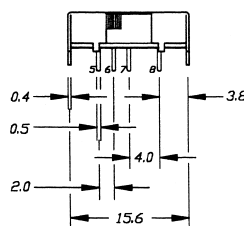
### P.C. MOUNTING



### Schematic



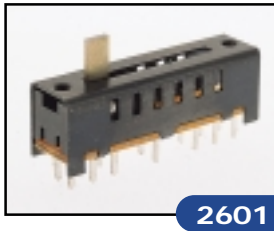
Model No.	L
EG2325	2
EG2325A	6
EG2325B	9



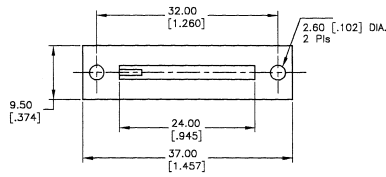
SPECIFICATIONS SUBJECT TO CHANGE WITHOUT NOTICE.

# SERIES E G SWITCHES

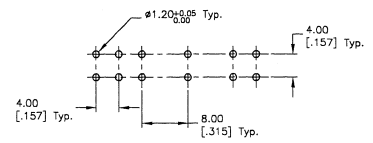
## SLIDE SWITCHES



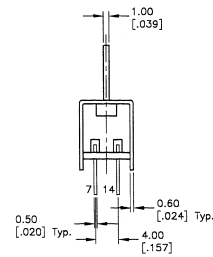
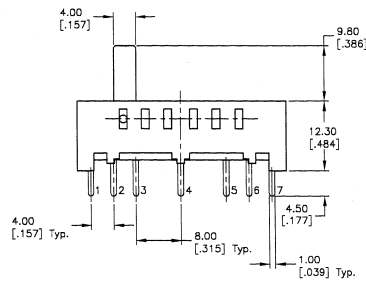
2601



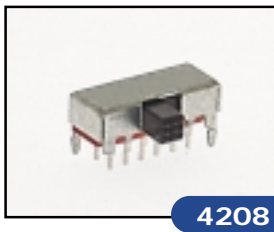
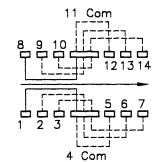
### P.C. MOUNTING



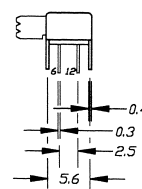
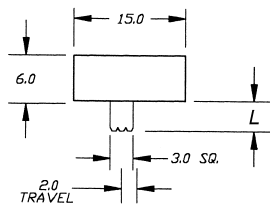
Model No.	L	"A"
EG2601	9.8	None
EG2601A	9.8	M2.6 x P0.45
EG2601B	6.5	M2.6 x P0.45
EG2601C	6.5	None



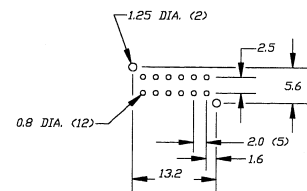
### Schematic



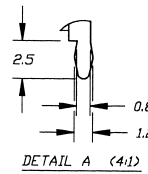
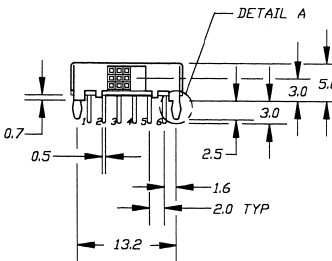
4208



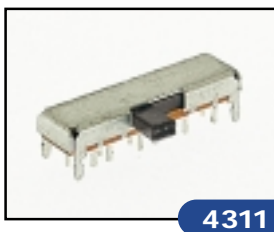
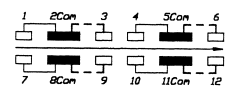
### P.C. MOUNTING



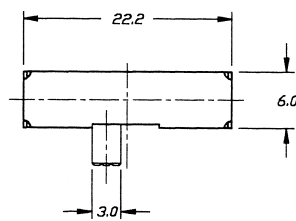
Model No.	L
EG4208	4
EG4208A	6



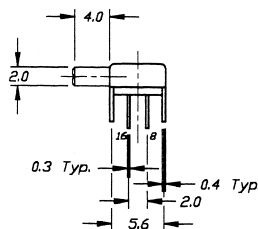
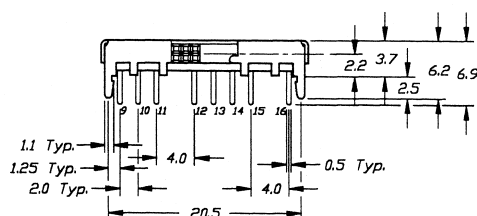
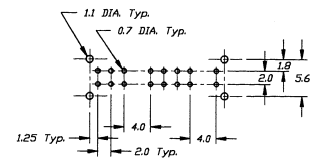
### Schematic



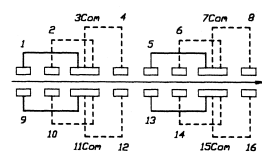
4311



### P.C. MOUNTING



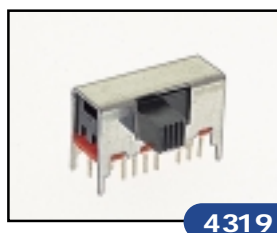
### Schematic



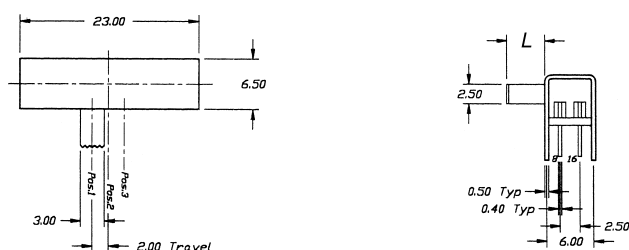
SPECIFICATIONS SUBJECT TO CHANGE WITHOUT NOTICE.

# SERIES E G SWITCHES

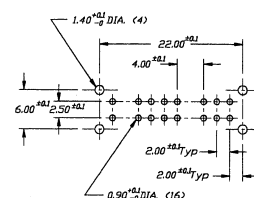
## SLIDE SWITCHES



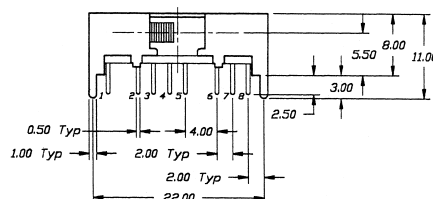
4319



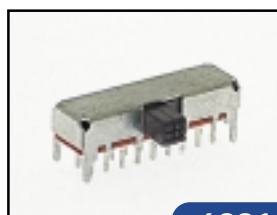
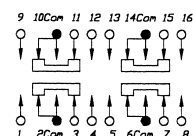
### P.C. MOUNTING



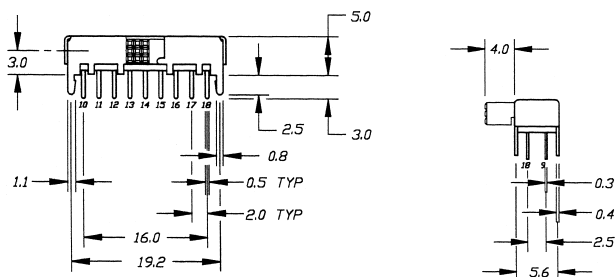
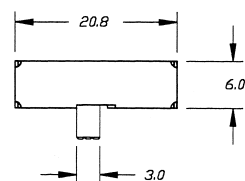
Model No.	L
EG4319	5
EG4319A	6



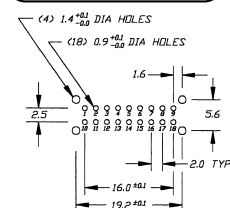
### Schematic



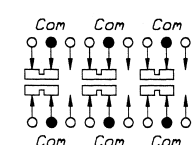
6201



### P.C. MOUNTING



### Schematic



SPECIFICATIONS SUBJECT TO CHANGE WITHOUT NOTICE.