

EM6011-BC EM6011P-BC EM6011S-BC

Appearance 外观图

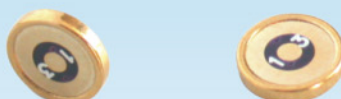
EM46011-BC



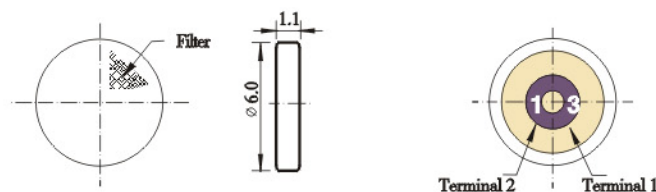
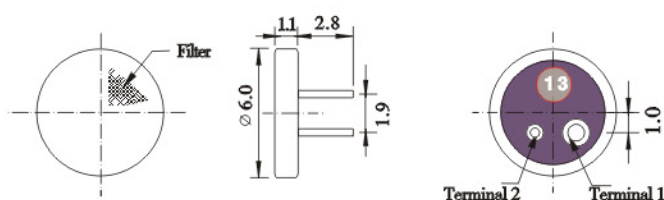
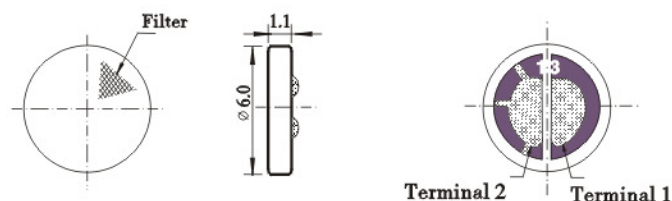
EM6011P-BC



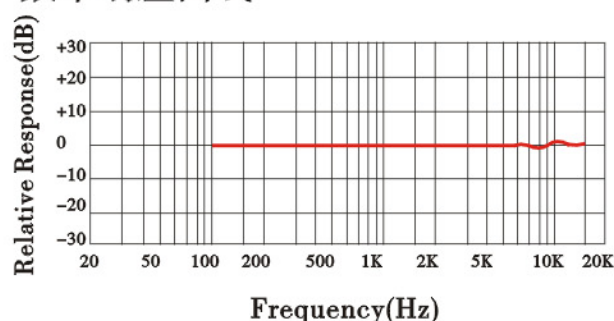
EM6011S-BC



Dimensional Drawing 轮廓图 Unit:mm



Typical Frequency Response 频率响应曲线



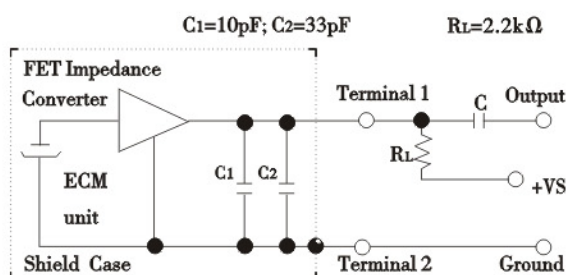
Sensitivity Range 灵敏度范围

$-42 \pm 3\text{dB}$	$-46 \pm 3\text{dB}$
$-44 \pm 3\text{dB}$	$-48 \pm 3\text{dB}$

Specification 规格

Sensitivity:	See above (0dB=1V/Pa. 1KHz)
Directivity:	Omnidirectional
Impedance:	Low impedance
Current Consumption:	Max. 0.5mA
Standard Operation Voltage:	2.0V
Sensitivity Reduction:	Within-3dB at 1.5V
S/N Ratio:	More than 58dB

Schematic Diagram 测试电路图



灵敏度:	参照上述: (0dB=1V/Pa. 1KHz)
方向性:	全向
阻抗:	低阻抗
电流消耗:	最大0.5mA
标准工作电压:	2.0V
灵敏度减低:	1.5V时-3dB以内
信噪比:	大于58dB