

Ceramic Low Pass Filter

DC to 1350 MHz

NEW!
LFTC-1350

Maximum Ratings

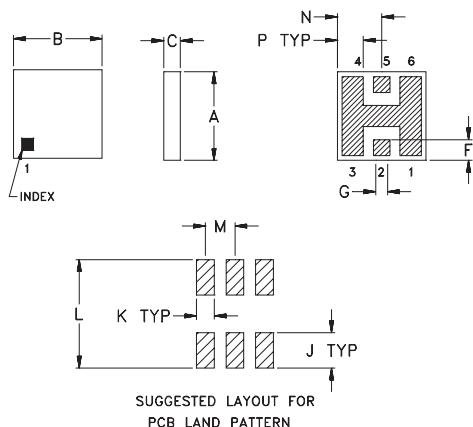
Operating Temperature	-55°C to 100°C
Storage Temperature	-55°C to 125°C

Pin Connections

RF IN	2**
RF OUT	5**
GROUND	1,3,4,6

** RF IN & RF OUT can be interchanged

Outline Drawing

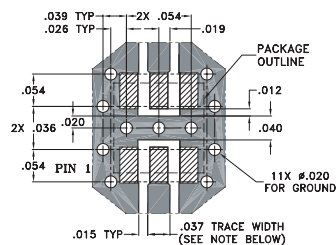


TOLERANCE UNLESS OTHERWISE STATED
2 PLACES DECIMAL: ±.01
3 PLACES DECIMAL: ±.005

Outline Dimensions (inch)

A	B	C	D	E	F	G	
.150	.150	.028	—	—	.035	.028	
3.81	3.81	0.71	—	—	0.89	0.71	
H	J	K	L	M	N	P	wt.
—	.060	.030	.184	.050	.075	.044	grams
—	1.52	0.76	4.67	1.27	1.91	1.12	0.15

Demo Board MCL P/N: TB-233 Suggested PCB Layout (PL-112)



NOTE: TRACE WIDTH IS SHOWN FOR ROGERS RO4350 WITH DIELECTRIC THICKNESS .020" ± .0015". COPPER: 1/2 OZ. EACH SIDE. FOR OTHER MATERIALS TRACE WIDTH MAY NEED TO BE MODIFIED.

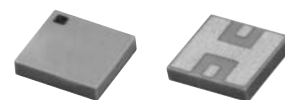
■ DENOTES PCB COPPER LAYOUT
■ DENOTES COPPER LAND PATTERN FREE OF SOLDERMASK

Features

- miniature size, 0.15"X0.15"X.028"
- low profile, .028" height
- high power handling, 15W
- 7 sections

Applications

- harmonic rejection
- internal rejection
- receivers & transmitters



BLUE CELL™

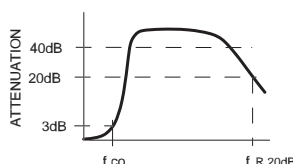
CASE STYLE: FR933
PRICE: \$3.75 ea. QTY (10-49)

Low Pass Filter Electrical Specifications (T_{AMB}=25°C)

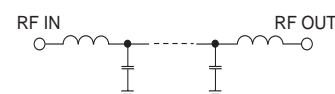
MODEL NO.	PASSBAND (MHz) (loss < 1 dB) Typ.	f _{co} , MHz Nom. (loss 3 dB) Typ.	STOP BAND (MHz) (> 20 dB) (loss > 40 dB) fr20dB Typ.	VSWR (:1) Passband Typ.	POWER INPUT* (W)	MARKING	NO. OF SECTIONS
LFTC-1350	DC-1350	1550	2100 2700-4000 7000	1.2	15	LF1	7

* Derate linearly to 7W at 100°C ambient

typical frequency response

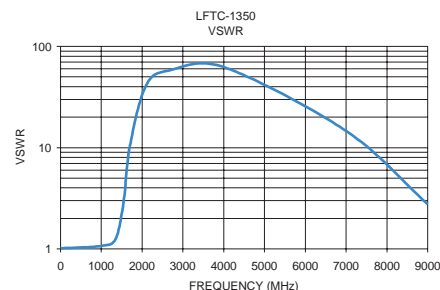
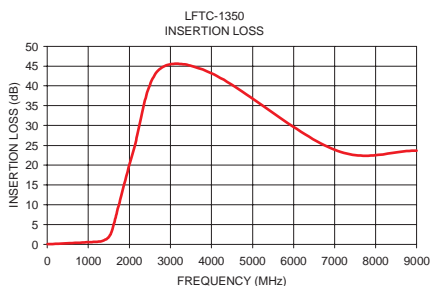


schematic



Typical Performance Data at 25°C

Frequency (MHz)	Insertion Loss (dB)	VSWR (:1)
1.00	0.06	1.01
1000.00	0.57	1.07
1350.00	0.91	1.25
1550.00	2.76	2.96
1700.00	8.24	10.25
2100.00	23.80	41.48
2700.00	43.89	58.41
4000.00	43.19	62.68
7000.00	23.87	14.62
9000.00	23.66	2.77



Mini-Circuits®

Distribution Centers NORTH AMERICA 800-654-7949 • 417-335-5935 • Fax 417-335-5945 • EUROPE 44-1252-832600 • Fax 44-1252-837010

ISO 9001 CERTIFIED

INTERNET <http://www.minicircuits.com>

P.O. Box 350166, Brooklyn, New York 11235-0003 (718) 934-4500 Fax (718) 332-4661

REV. H
M88950
LFTC-1350
EDB-020405
AD/YB/CP
030918