

**LEDTRONICS, Inc**

TELE: 213-676-7446  
FAX: 213-676-0108

### 17.8mm DIGIT HEIGHT

## 0.7"-5x7 LED DOT MATRIX

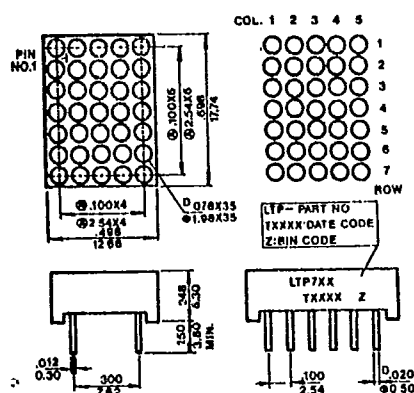
**STD RED, HI-RED, HI-EFF RED/YELLOW/GREEN**

LED/ELCTRONICS PART NO. LTP-				LED RADIATION COLOR	ABSOLUTE MAXIMUM RATINGS Ta=25°C					ELECTRO-OPTICAL CHARACTERISTICS Ta=25°C					
ANODE COLUMN	SECOND SOURCE	CATHODE COLUMN	SECOND SOURCE		Pd mW	I <sub>fp</sub> mA	I <sub>f</sub> mA	V <sub>r</sub> V	T <sub>opr</sub> °C	I <sub>f</sub> mA	I <sub>OTYP</sub> μcd	V <sub>fTYP</sub> V	V <sub>fMAX</sub> V	I <sub>rMAX</sub> μA	λ <sub>P</sub> nm
747R	BM071S7MD	757R	BM071S7ND	STD RED	45	120	20	5	-25to+85	10	450	1.7	2.0	100	655
747PR	BM076S7MD	757PR	BM076S7ND	HI-RED	30	40	12	5	-25to+85	10	600	2.1	2.2	100	647
747HR	BM074S7MD	757HR	BM074S7ND	HI-EFF RED	60	80	20	5	-25to+85	10	1800	2.1	2.8	100	635
747E	BM074S7MD	757E	BM074S7ND	ORANGE	60	80	20	5	-25to+85	10	1800	2.1	2.8	100	630
747Y	BM073S7MD	757Y	BM073S7ND	YELLOW	50	60	12	5	-25to+85	10	1300	2.1	2.8	100	585
747G	BM072S7MD	757G	BM072S7ND	GREEN	60	80	20	5	-25to+85	10	1800	2.1	2.8	100	565
	BM076S7MD		BM076S7ND	ULTRA RED	55	55	25	5	-25to+85	20	2000	1.7	2.1	100	660

NOTE: ULTRA RED IS GAINING LOW POWER  
HIGH INTENSITY RED

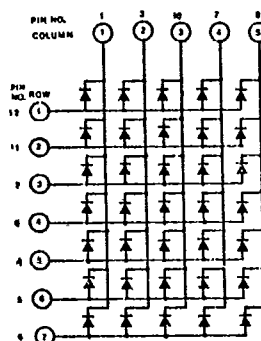
ALL PARAMETERS ARE PER DOT

## PACKAGE DIMENSIONS

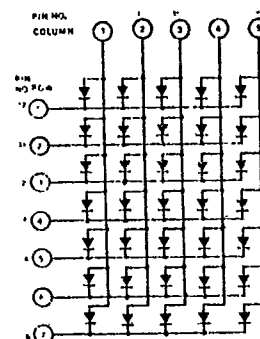


### INTERNAL CIRCUIT DIAGRAM

LTP-747



LTP-757



NOTE: All dimensions are in  $\frac{\text{inches}}{\text{millimeters}}$ , tolerance is  $\frac{0.010''}{0.25\text{mm}}$  unless otherwise noted.

## PIN FUNCTION

PIN NO	CONNECTION	
	LTP-747	LTP-757
1	ANODE COLUMN 1	CATHODE COLUMN 1
2	CATHODE ROW 3	ANODE ROW 3
3	ANODE COLUMN 2	CATHODE COLUMN 2
4	CATHODE ROW 5	ANODE ROW 5
5	CATHODE ROW 6	ANODE ROW 6
6	CATHODE ROW 7	ANODE ROW 7
7	ANODE COLUMN 4	CATHODE COLUMN 4
8	ANODE COLUMN 5	CATHODE COLUMN 5
9	CATHODE ROW 4	ANODE ROW 4
10	ANODE COLUMN 3	CATHODE COLUMN 3
11	CATHODE ROW 2	ANODE ROW 2
12	CATHODE ROW 1	ANODE ROW 1

