



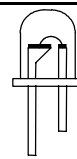
CDS , ON/OFF , OSH

RGB LED IC

三色灯 LED IC

LED FLASH

M1347



FEATURES 功能叙述

- Auto: 6 段自动调速.
- SEL: 选择花样, 长按 > 2 SEC 自动 OFF 功能
(Auto mode 此功能无效), 再按进入下一段。
- OSH: 8 cycle.
- S1、S2: 4 段花样选择.
- Pause: 色彩及亮度暂停功能.

APPLICATION 产品应用

- Blinking LED, Function indicator, R.G.B Mix etc..

ELECTRICAL CHARACTERISTICS 电气规格

(@V_{DD}=3V unless otherwise specified)

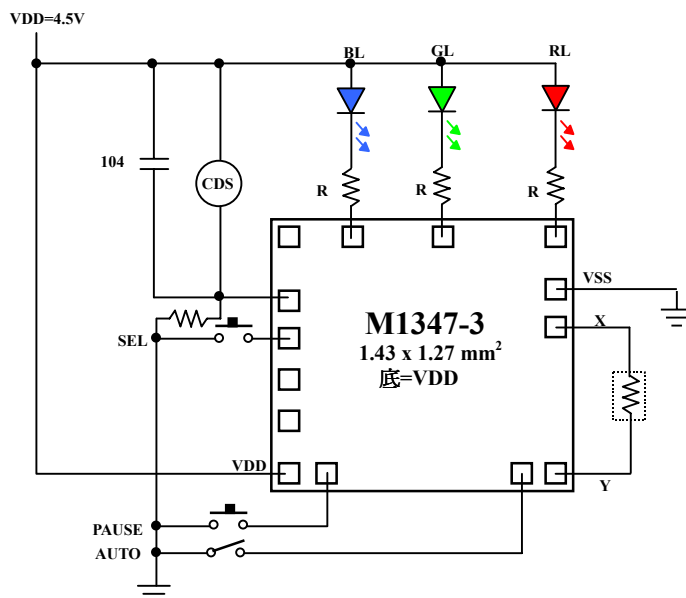
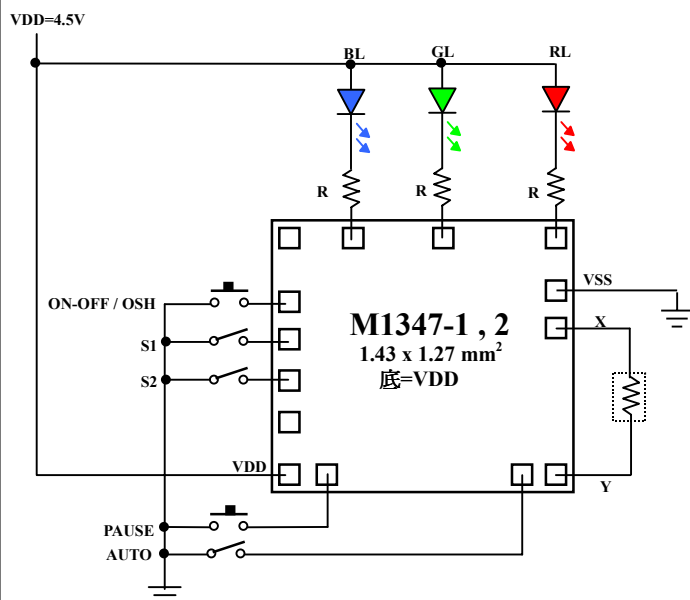
Characteristics	Sym.	Min.	Typ.	Max.	Unit	REMARKS
工作电压 Operating Voltage	V _{DD}	1.5	3	4.5	V	
工作电流 Operating Current	I _{OP}	—	0.1	0.5	mA	No load
静态电流 Quiescent Current	I _{SB}	—	1	5	μ A	
推动电流 Driving Current	I _{OL}	20	—	—	mA	@V _{DS} = 1.2 V
振荡频率 Oscillator Frequency	F _{LED}	—	200	—	KHz	±30% TOL.
工作温度 Operating Temperature	Temp.	0	25	60	°C	

APPLICATION DIAGRAM 参考电路图

* M1347-1: ON/OFF CONTROL

* M1347-2: ONE-SHOT CONTROL

* M1347-3 : CDS (4 PATTERN SELECT)



* M1347-1 / -2

S1	S2	SECTION
X	X	1
VSS	X	2
X	VSS	3
VSS	VSS	4

*All specs and applications shown above subject to change without prior notice.

(以上电路及规格仅供参考,本公司得径行修正)



~ 華半導體股份有限公司
MOSDESIGN SEMICONDUCTOR CORP.

TAIPEI: TEL: 886-2- 22783733

FAX: 886-2- 22783633

H.K. : TEL: 852- 27569109

FAX: 852- 27566961

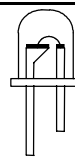
CDS , ON/OFF , OSH

RGB LED IC

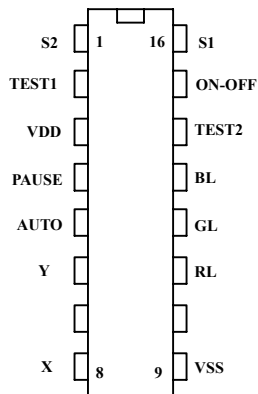
三色灯 LED IC

LED FLASH

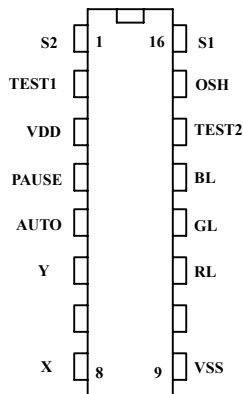
M1347



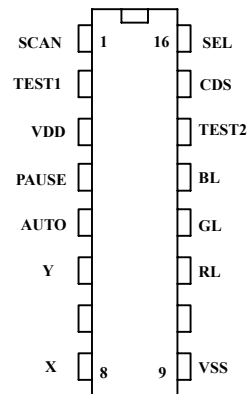
M1347-1P



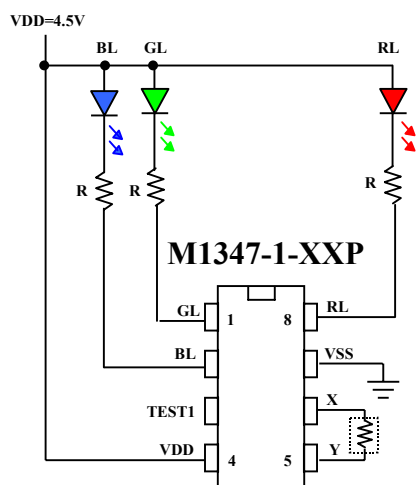
M1347-2P



M1347-3P



* S.O Package 8 PIN



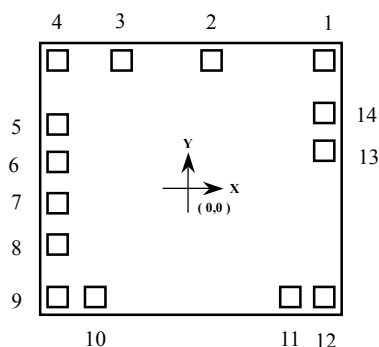
* Power-on flash.

* 4 section pattern select (bonding option).

* **M1347-1**

Sestion	Suffix	Function
1	C1	1/2 Phase
2	C2	七彩渐明渐暗
3	C3	七彩变化
4	C4	多彩变化

PAD ASSIGNMENT & POSITION



UNIT : μm

No.	NAME	X	Y
1	RL	592	514
2	GL	94	514
3	BL	-307	514
4	TEST2	-592	514
5	K1	-592	230.5
6	K2	-592	54
7	K3	-592	-122.5
8	TEST1	-592	-299
9	VDD	-592	-514
10	PAUSE	-423	-514
11	OP	426.75	-514
12	Y	592	-514
13	X	592	120.25
14	VSS	592	280.25

* CHIP SIZE $\sim 1.43 \times 1.27 \text{ mm}^2$

* IC substrate should be connected to VDD in PCB (PCB 上 IC 必须接 VDD)

(以上电路及规格仅供参考,本公司得径行修正)