



SIREN

M3720



1 KEY 1 SOUND

1 键 1 音效 IC

FEATURES 功能叙述

- LED flash output.
- Envelope generator selectable.
- Speaker or directly buzzer application.

| P/N | SOUND | Fosc (KHz) | Rosc | 应用 |
|----------|-------------------|------------|------|----|
| M3720-1 | AIRPLANE 飞机声 | 64 | 390K | A |
| M3720-2 | ROCKET 火箭声 | 96 | 220K | A |
| M3720-3 | SIREN II 警报声 II | 64 | 220K | A |
| M3720-4 | POLICE CAR 警车声 | 128 | 150K | A |
| M3720-5 | FIRE BRIGADE 救火车声 | 128 | 150K | A |
| M3720-6 | SIREN I 警报声 I | 64 | 360K | A |
| M3720-7 | DIAL TONE 电话声 | 64 | 390K | B |
| M3720-8 | CHICKEN 小鸡叫 | 260 | 62K | B |
| M3720-9 | AMBULANCE 救护车声 | 64 | 390K | A |
| M3720-10 | DAN 1 TIME 当声 1 次 | 64 | 390K | C |

APPLICATION 产品应用

- Siren system, Home/Car alarm etc..

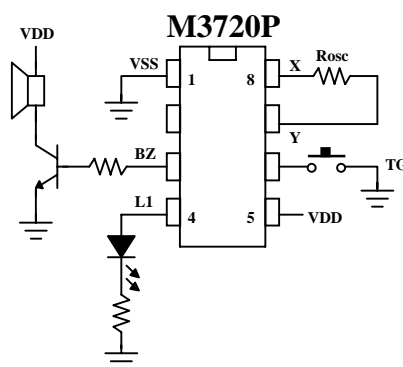
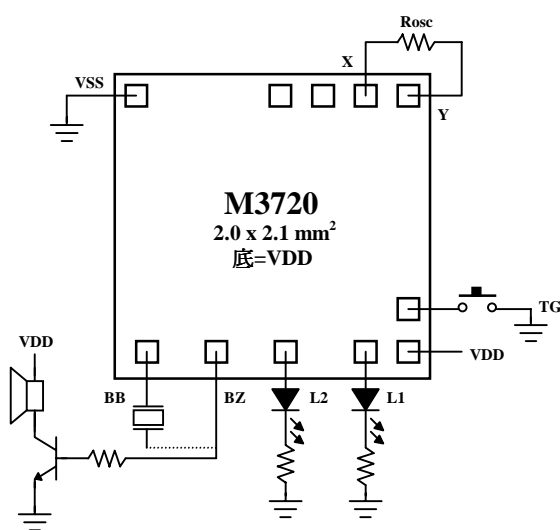
ELECTRICAL CHARACTERISTICS 电气规格

(@ V_{DD}=3V unless otherwise specified)

| Characteristics | Sym. | Min. | Typ. | Max. | Unit | REMARKS |
|----------------------------|------------------|------|------|------|------|-------------------------|
| 工作电压 Operating Voltage | V _{DD} | — | 3 | 3.5 | V | |
| 工作电流 Operating Current | I _{OP} | — | 0.1 | 0.5 | mA | No load |
| 静态电流 Quiescent Current | I _{SB} | — | 1 | 5 | μ A | |
| 推动电流 BZ Driving Current | I _O | 1 | — | — | mA | @ V _{DS} =1V |
| 推动电流 LO Driving Current | I _{OL} | 2 | — | — | mA | @ V _{DS} =1.2V |
| 振荡频率 Oscillator Frequency | F _{OSC} | — | — | — | KHz | External ±30% |
| 工作温度 Operating Temperature | Temp. | 0 | 25 | 60 | °C | |

APPLICATION DIAGRAM 参考电路图

(A)





一 華 半 導 體 有 限 公 司
MOSDESIGN SEMICONDUCTOR CORP.

TAIPEI : TEL : 886-2- 22783733

FAX : 886-2- 22783633

H.K. : TEL : 852- 27569109

FAX : 852- 27566961

SIREN

M3720

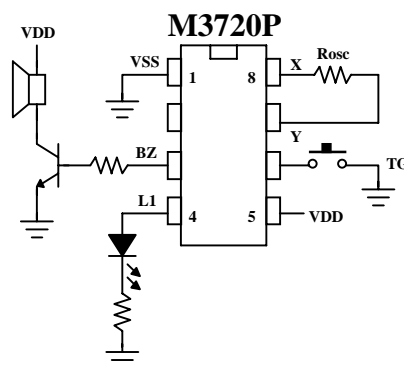
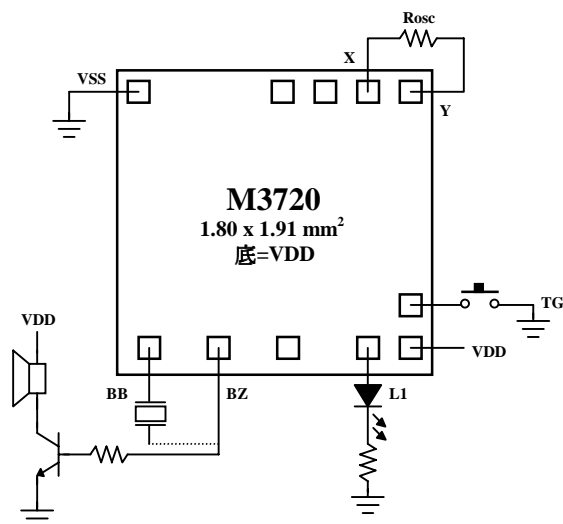


1 KEY 1 SOUND

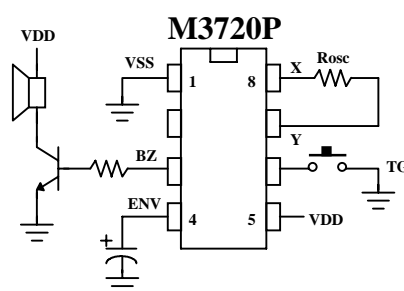
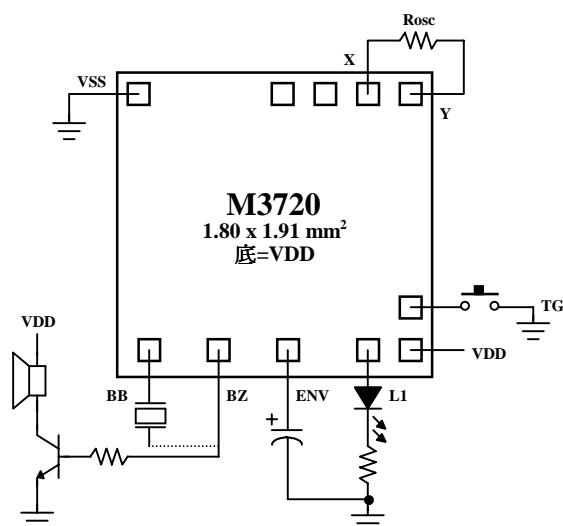
1 键 1 音效 IC

APPLICATION DIAGRAM 参考电路图

(B)



(C)



*All specs and applications shown above subject to change without prior notice.

(以上电路及规格仅供参考,本公司得行修正)



~ 華半導體股份有限公司
MOSDESIGN SEMICONDUCTOR CORP.

TAIPEI : TEL : 886-2- 22783733

FAX : 886-2- 22783633

H.K. : TEL : 852- 27569109

FAX : 852- 27566961

SIREN

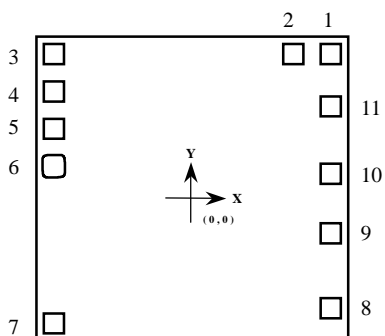
M3720



1 KEY 1 SOUND

1 键 1 音效 IC

PAD ASSIGNMENT & POSITION



| UNIT : um | | | |
|-----------|------|------|------|
| No. | NAME | X | Y |
| 1 | VDD | 747 | 754 |
| 2 | TG | 537 | 754 |
| 3 | Y | -749 | 754 |
| 4 | X | -749 | 544 |
| 5 | TEST | -749 | 334 |
| 6 | T1 | -749 | 124 |
| 7 | VSS | -749 | -754 |
| 8 | BB | 747 | -653 |
| 9 | BZ | 747 | -259 |
| 10 | L2 | 747 | 80 |
| 11 | L1 | 747 | 465 |

* CHIP SIZE ~ 1.80 x 1.91 mm²

* IC substrate should be connected to VDD in PCB (PCB 上 IC 必须接 VDD)