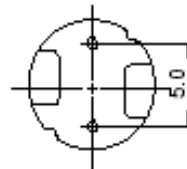
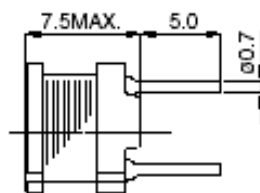
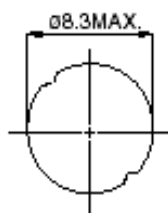


RCH Series Power Inductors

RCH-875

Dimensions(mm)



Specifications

Parts No.	Inductance	DCR.(Max) Typical /Rated DC. Current (A)	Parts No.	Inductance	DCR.(Max) Typical /Rated DC. Current (A)
100	10uH	0.05(0.03)/2.90	821	820uH	2.56(2.07)/0.30
120	12uH	0.06(0.03)/2.50	102	1.0mH	2.94(2.38)/0.27
150	15uH	0.07(0.05)/2.20	122	1.2mH	4.04(3.10)/0.24
180	18uH	0.08(0.05)/1.90	152	1.5mH	4.70(3.57)/0.22
220	22uH	0.09(0.06)/1.80	182	1.8mH	5.05(3.99)/0.20
270	27uH	0.11(0.08)/1.70	222	2.2mH	6.25(4.82)/0.18
330	33uH	0.13(0.09)/1.50	272	2.7mH	8.72(6.58)/0.16
390	39uH	0.14(0.10)/1.40	332	3.3mH	10.60(7.57)/0.15
470	47uH	0.15(0.11)/1.30	392	3.9mH	14.20(10.6)/0.14
560	56uH	0.18(0.14)/1.20	472	4.7mH	16.70(12.7)/0.12
680	68uH	0.20(0.16)/1.10	562	5.6mH	18.70(13.7)/0.11
820	82uH	0.24(0.19)/1.00	682	6.8mH	21.80(16.2)/0.10
101	100uH	0.28(0.23)/0.89	822	8.2mH	28.70(21.8)/93m
121	120uH	0.36(0.29)/0.81	103	10mH	33.00(25.7)/84m
151	150uH	0.42(0.35)/0.72	123	12mH	
181	180uH	0.57(0.45)/0.66	153	15mH	
221	220uH	0.63(0.52)/0.57	183	18mH	
271	270uH	0.88(0.71)/0.51	223	22mH	
331	330uH	1.05(0.78)/0.46	273	27mH	
391	390uH	1.17(0.91)/0.44	333	33mH	
471	470uH	1.34(1.04)/0.41	393	39mH	
561	560uH	1.72(1.36)/0.36	473	47mH	
681	680uH	1.96(1.56)/0.33			

Tolerance of Inductance: 10uH-12uH ±20% (M); 15uH-10mH ±10% (K)

Test Frequency:L 10uH-82uH (2.52MHz); 100uH-47mH (1KHz).

This indicates the value of the current when the inductance is 10%lower than it's initial value at D.C. superimposition or D.C. current when at t=40°C,whitchever is lower.(Ta=20°C)